



# St Ann's Church of England Primary School



*Together, we aim high; with God's love, we can fly!*

Value of the Half Term

*Compassion*

Newsletter Issue 13

Friday 6 December 2024

Finally, all of you, be like-minded, be sympathetic,  
love one another, be compassionate and humble.

Peter 3:8

## CONTENTS

1. Breakfast with Santa
2. Well Done Choir
3. Mentoring Conversations
4. Lockdown Practice
5. Debate Academy
6. Parent Forum Vacancies
7. Spotlight on: Mathematics
8. The Schools Out – Shout Out
9. Early Years Nativity
10. KS1 Nativity
11. A Special thanks to Rainhill Rotary
12. Christmas Parties
13. Christmas Dinner & Jumper Day
14. Y3 Christmas Service
15. Children's University Passport Bank
16. Safeguarding Top Tip #11
17. Job Vacancy at St Ann's
18. General Information/Reminders



## BREAKFAST WITH SANTA

Our first ever Breakfasts with Santa were a huge success this week. Such an exciting start to the day and festive period. Thank you to our staff, especially Mrs Preston and Mrs Mulligan, parent volunteers for supporting this school fund raiser, and of course the big man himself! If your child attended we hope they enjoyed their session. We are delighted to report that we raised an amazing amount for school fund. All funds raised are directly spent on enriching the children's education, so thank you for your support.



KIDS GET THEIR SUPER POWERS BY  
**ATTENDING SCHOOL  
EVERY DAY** ⚡

BE AN ATTENDANCE  
SUPERHERO!

Whole school attendance year to date <i>Whole School target 96%</i>	96.81%
Whole school attendance week ending 29 <sup>th</sup> November 2024	95.34%
Class with best weekly attendance	5G – 100%

## #EveryMomentMatters



### Attendance Expectations

Children are expected to be in school **every day** unless they are unwell. All other reasons will be unauthorised. If your child is going to be absent, contact school and let us know before 9.20am. Children not in school may receive a phone call home or home visit. In line with our Attendance Policy, we are committed to supporting families in improving their child's attendance, before taking legal action.

**Number of pupils  
with 100% attendance  
this week**

**365**

### Punctuality

School starts at **8.50am**.  
Lessons start at **8.50am**.

School gates open at 8.40am.

Children arriving after 8.50am will need to use the main entrance. Children who enter school via the main entrance will be registered as late. Regularly missing the beginning of lessons has a negative impact on a child's progress and wellbeing.

## WELL DONE CHOIR

This week our choir performed a Christmas medley for the residents of Amberley Residential Care Home. So special to be able to spread the joy of Christmas across our community.

*“Good afternoon. Everyone from Amberley Court care home would like to say a big thank you to all the children and staff for this morning's Christmas carols. We all really enjoyed it and super grateful for your time. All the children were so well behaved and polite, you must be very proud of them. Thank you again.”*

## LOCKDOWN PRACTICE

As well as having regular fire drills at St Ann's, we also practice what to do in the event of a lockdown. The difference between the two however, is that we give the children some notice about the lockdown practice to mitigate any worries they may have in relation to this.

All being well, our lockdown practice will take place this half term. Prior to the lockdown, teachers will talk to their class in an age-appropriate way about what a lockdown is and what we do when a lockdown is announced to keep safe. You may like to talk to your child about this at home, and ask them about what happens in their class when this is announced.

## PARENT FORUM VACANCIES



We have a number of vacancies on this year's Parent Forum. We are keen to fill these, so if you are interested please contact Mrs Rynn via the school office. We look forward to hearing from some parents/ carers soon.

## MENTORING CONVERSATIONS

Mentoring Conversations are an opportunity for you to meet with your child's class teacher regarding their progress, attainment and wellbeing in school. Please refer to separate letter regarding the dates and times of this half term's mentoring conversations. The letter outlines how you can book your preferred time slot.

## DEBATE ACADEMY

This week, the Year 4 and 5 pupils have had an exciting time at the Debate Academy workshop, where they learned the essentials of debating. The children explored what a debate is, where it takes place, and shared their creative ideas on what they would do if they were the King or Queen. With great enthusiasm, they presented their thoughts to the class, sparking lively discussions and exchanges of ideas. At the end of the session, a secret vote was held to determine who had the most impressive ideas. It was a fun and engaging experience that encouraged critical thinking and creativity. We hope that some of the children will be inspired to join the Debate Club and continue to develop their debating skills!



We are delighted to announce that during the Spring term, the Debate Academy will be offering an after school club to enhance children's oracy skills. *Watch this space for further information.*

## A SPOTLIGHT ON: MATHEMATICS

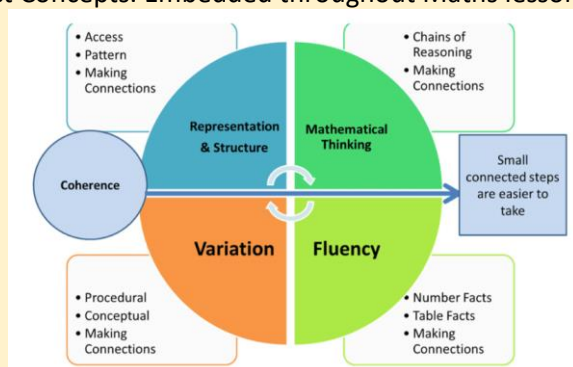


Our Maths provision at St Ann's aims to build a curriculum which coherently develops and deepens learning; resulting in all pupils knowing more, remembering more and understanding more.

When teaching Maths, we use a variety of teaching methods and resources that allow all pupils to experience Maths success, regardless of prior starting points and previous knowledge. Over time, children will become more resilient learners who are able to understand that to make mistakes, or become stuck, is a necessary step in any learning. All children will be appropriately challenged and supported in their Maths lessons through varied fluency, reasoning and problem solving – The 3 Aims of the Maths National Curriculum.

Irrespective of personal starting points, children will explore Maths in depth, and use a range of Mathematical vocabulary to reason and explain their own thinking. We strongly encourage the use of correct, subject specific terminology and children using this key vocabulary in full sentences to articulate what they are doing, and most importantly, **why** they are doing it. We do not want children to simply be able to recall procedures by rote, as this suggests limited understanding of why they are doing what they are doing.

Visual representations, concrete manipulatives and pictorial images are used in all Maths lessons to support children's developing Mathematical understanding in a variety of ways. These include, but are not limited to, numicon, base 10, place value counters, bead strings, number lines, digit cards and hundred squares. This is inline with the CPA approach to learning – Concrete Manipulatives, Pictorial Images and Abstract Concepts. Embedded throughout Maths lessons are the 5 Principles of Teaching for Mastery.



We encourage all children from EYFS through to Y6 to regularly access and use Numbots and TTRS. These platforms aim to reinforce and consolidate learning as well as increase fluency, speed and accuracy, ultimately improving children's confidence with basic skills. In addition to daily Maths lessons, EYFS use the NCETM Numberblocks program which introduces the concept of number to young children gently through engaging storylines and characters.

Children take part in daily Maths lessons and aside from the daily Maths lesson, a number of additional programmes are used at St Ann's to support children's learning. These include; Mastering Number (a nationwide programme accredited by the NCETM) in EYFS, Y1, Y2, Y4 + Y5; Maths Meetings in Y3 + Y6 and discrete micro teaching of Times Tables in Y3 + Y4.

## THE SCHOOLS OUT – SHOUT OUT

BBC Radio Merseyside is starting a new feature on the Afternoon Show with Helen Jones called 'THE SCHOOLS OUT – SHOUT OUT'

So pupils, teachers, parents, staff...LISTEN UP , because this daily slot IS FOR YOU on BBC Radio Merseyside, Monday to Friday at 3.50pm

If you have a school event, wanna say thanks to the catering staff, or BIG UP a teacher ... pupils wanting to get a mention ... or plug the Christmas Fair ....then come on air & chat with Jonesey ...she'll give YOUR school & event a " Schools Out Shout Out'

Call The Helen Jones Afternoon Show on BBC Radio Merseyside on 0800 731 9333 from 2pm...



### EARLY YEARS NATIVITY

EYP & EYM will perform their nativity on:

Wednesday 18 December  
9.30am for EYM parents/ carers  
2.00pm for EYP parents/ carers

The nativity will take place in the school hall, each child will be issued with 2 tickets.

### KS1 NATIVITY (Y1 & Y2)

Y1 & Y2 will perform their nativity on:

Monday 16 December @ 9.30am  
Monday 16 December @ 2.00pm  
Tuesday 17 December @ 9.30am  
Tuesday 17 December @ 2.00pm

A total of 4 tickets per family can be purchased at a cost of £2 per ticket. A link will be sent out on 26th November to confirm your ticket preferences. Once the link has been completed please access 'Key Stage 1 Nativity' on Arbor to make payment for your tickets.

The deadline for payments is 9th December.

The nativity will take place in the school hall.

### FAMILY WORSHIP

A logo for 'FAMILY WORSHIP' with the words in colorful, stylized letters on a dark purple background with small white dots.

Well done to 4H on a wonderful Family Worship.

On **Friday 23 January 3E** will lead their Family Worship in the hall.

Please wait at the back of school by the hall door ready to be let in.

### A SPECIAL THANKS TO RAINHILL ROTARY



We are delighted to share news that last week Rainhill Rotary made a donation towards school fund. The donation will be spent on supporting our visit from Father Christmas in the final week of this half term.

We are proud of our relationship with Rainhill Rotary and appreciate their ongoing support of our school. THANK YOU RAINHILL ROTARY! #CommunitySpirit

## CHRISTMAS PARTIES



It's nearly Christmas party time! Dates and times can be seen below. On the day of your child's Christmas party, they should wear their party clothes to school (bearing in mind that we will still be outside at playtime and lunchtime), and bring in one Christmas party snack e.g. packet of crisps or chocolate bar (all nut free and no hard boiled sweets)

Y2	Wednesday 18 December
EYS, Y1, Y3 & Y4	Thursday 19 December
Y5 & Y6	Friday 20 December

## YEAR 3 CHRISTMAS SERVICE

Y3 will lead a Christmas Service on Friday 20 December at 2.15pm St Ann's Church.

Everyone welcome!

## CHRISTMAS DINNER & JUMPER DAY

On **Friday 13 December** we will be supporting the charity Save the Children by wearing out Christmas jumpers/ outfits and accessories to school. The suggested voluntary donation is £1. Please send this into school with your child. On the same day, children who have a school meal will be served a Christmas dinner at lunchtime.

Members of our local community will be invited to join the children.



## CHILDREN'S UNIVERSITY PASSPORT BANK

**Week commencing 16 December** all children with a Children's University Passport should bring it into school so that their extra-curricular hours can be logged. New passports can be purchased from the school office.

## SAFEGUARDING TOP TIP #11:

### Stress

Lots of different things can cause stress and it can feel difficult or like you can't cope.

But you can manage stress, here are some tips that can help you get it under control.

Sometimes stress can be helpful, it can motivate you to get things done. Or help you see that things need to change.

*5 things that you can try*

1. writing or drawing how you feel
2. exercise and sports
3. planning what you do
4. having healthy food and drink
5. take deep breaths.

For more advice visit

<https://www.childline.org.uk/info-advice/your-feelings/anxiety-stress-panic/coping-with-stress/>



## JOB VACANCY AT ST ANN'S

### Level 2 & 3 Teaching Assistant

*The Three Saints Academy Trust is committed to safeguarding and promoting the welfare of its pupils and expects all those working within the trust to share this commitment. All offers of employment are subject to an Enhanced DBS check, and where applicable, a prohibition from teaching check will be completed for all applicants.*

*Visits to the school are encouraged and warmly welcomed. Please telephone to arrange an appointment (0151 426 5869).*

#### **Application Process:**

The application pack is available on <http://www.three-saints.org.uk/index.php/vacancies/>. CVs will not be accepted.

**Closing Date, Short-listing & Interviews: Please job adverts**

We are seeking to appoint a highly motivated, enthusiastic and talented L2 & L3 teaching assistant to join our outstanding primary school, and who shares our vision for providing a first-class education and instilling all our children with a love of learning.

#### **Who we are looking for:**

We are looking for an exceptional teaching assistant who

- Likes working with all children and will be their advocate
- Enjoys the challenge of supporting pupils with complex learning/ pastoral needs
- Is passionate and enthusiastic for learning
- Has high expectations for all children
- Can establish good working relationships with children, staff and parents
- Can take direction and work on own initiative
- Can work as part of a team
- Promotes positive behaviour relentlessly
- Is hard working and conscientious
- Is resilient to set backs
- Sees a challenge as an opportunity
- Is an excellent communicator
- Is organised and efficient
- Is friendly and flexible
- Is professional and positive
- Understands confidentiality



St Ann's is an over-subscribed, two form entry Church of England primary school, with a strong track record of achievement and an outstanding judgement from Ofsted and excellent from SIAMs. We nurture and care for our children in a Christian ethos, placing our children and their family at the centre of our work. Our children are encouraged to be independent, creative and reflective learners who can self-manage, work within a team and effectively participate and communicate.



How does your child feel about **YOUR SCREENTIME** vs **THEIRS**?



“ When I grow up, I want to be an iPhone so my mum will talk to me ”  
~ London pupil

**DID YOU KNOW?**

45% of 8-11s feel that their parents' screentime is too high

35% of 8-17s feel that their own screentime is too high



**MAKES YOU THINK...**

Talk to your child about their device use, but remember yours, too



Source: Children and parents: media use and attitudes report 2024

AN E-SAFETY POSTER CREATED BY ONE OF KS2 PUPILS DURING THEIR COMPUTING CLUB

# STAY SAFE ONLINE

Don't share private information

Don't share your password

Be nice on line

Only friend people you know in reallife

Be nice

Be safe





EMPOWERING  
PARENTS  
EMPOWERING  
COMMUNITIES

## PARENT GROUP LEADER TRAINING OPPORTUNITY

Empowering Parents Empowering Communities (EPEC) is a parenting programme delivered by parents/carers in our community.

A course for parents led by parents

Support and empower local families

Gain valuable experience for future goals

10-week training for volunteers to support others



Help parents learn practical skills to raise happy confident children - Become a volunteer parenting group leader!

BSL Interpreters are available on request.  
To get in touch with us please contact:  
Email: [fhccvolunteering@sthelens.gov.uk](mailto:fhccvolunteering@sthelens.gov.uk)  
Telephone: 01744 673420 Text: 07704 776560



Family Hub

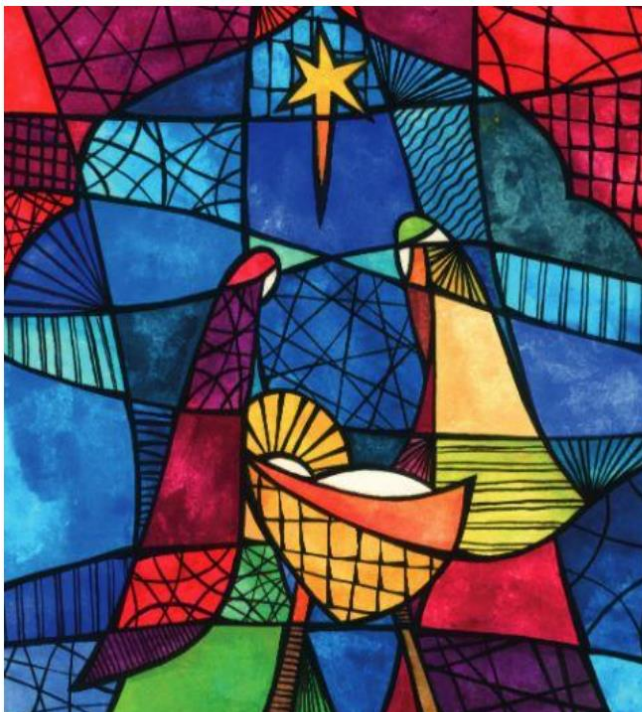
ST HELENS  
BOROUGH COUNCIL

## NEWS FLASH



This Photo by Unknown Author is licensed under CC BY-SA-NC

**DON'T FORGET TO PUT  
SUNDAY 8<sup>TH</sup> DECEMBER IN YOUR  
DIARY. THE SANDPIPER  
RESTAURANT KIDS CHRISTMAS  
PARTY  
4PM – 6PM.  
TICKETS ON SALE FROM 1st  
NOVEMBER TO RESERVE YOUR  
TICKET PLEASE CALL 0151-430-4732**



(Stained glass window: a Christmas card from Compassion)

St Ann's Church Rainhill  
**Community Carol Service**  
**Sunday December 15<sup>th</sup>**  
**6.30pm**  
Rainhill Community Choir  
and  
St Ann's School Choir  
Free entry



# ATTENDANCE REWARD RAFFLE

*At St Ann's we are relentless in our focus on attendance because we want the best for our pupils. The research speaks for itself, children with strong levels of attendance, fulfil their full potential and develop the skills and personal qualities required for a happy and fulfilled life.*

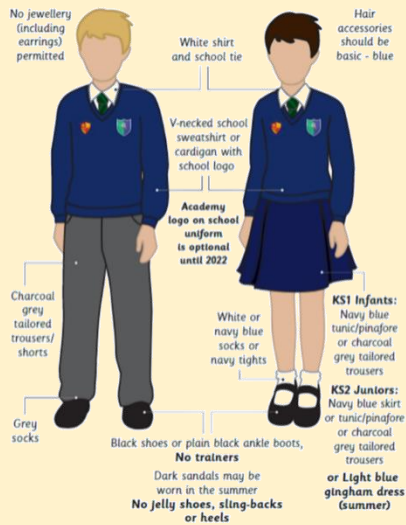
## Prize £50 Amazon Voucher

All children with **96%+ attendance**, and who have not taken a holiday during term time, by **Friday 20 December** will be entered into the next Attendance Raffle. **GOOD LUCK** 😊



## GENERAL INFORMATION/REMINDERS

### SCHOOL UNIFORM REMINDERS



*\*Please note, it is not compulsory to wear items of clothing with the school and Trust logos on. Children may wear plain navy-blue items of school uniform.*

### SCHOOL SHOES REMINDER



### INDIVIDUAL HEALTH CARE PLANS

If you have notified school that your child has a medical condition that requires an Individual Health Care Plan please ensure that if there are any changes to their condition a new form is completed.

If your child has a newly diagnosed condition that requires an Individual Health Care Plan please contact the school office to arrange for a form to be completed.

### TOAST (Y1-Y6 ONLY)

If you would like your child to have Toast at breaktime for Spring 1 (6th January - 14th February) please ensure that your Arbor Toast account has a balance of at least £7.50 by 17th December. If your account is not in credit by at least this amount by this date we will issue a reminder by In-App message. If payment is still not received by the date stated in the reminder we will be unable to provide your child with toast for the ensuing half term. Please see the weekly Newsletter for full details.

### EARLY YEARS SNACK

Early Years children receive snack on a daily basis. We would be grateful if you would make payment on Arbor of the following amounts by the due dates:

Autumn 2 - £11.90 – as soon as possible if not already done so  
Spring 1 - £10.50 – 17th December 2024  
Spring 2 - £10.50 – 7th February 2025  
Summer 1 - £8.40 – 26th March 2025  
Summer 2 - £12.25 – 20th May 2025

## CONTACT DETAILS, CONSENT & PERMISSIONS

On a regular basis please check your contact details, consent and permissions on Arbor to make sure they are up to date for your child. Thank you

## MELLOR'S SCHOOL MEAL MENU

For a copy of Mellor's most up to date school meals menu, please check out our website by clicking on the following link: <https://www.rainhillstanns.co.uk/page/?title=School+Dinner+Menu&pid=46>

*Please note, the menu is subject to change where there is a shortage of supplies.*

### TERM DATES 2024-25

Term	Open on	Close on
Autumn Term 2024	4 <sup>th</sup> September 2024	25 <sup>th</sup> October 2024
	4 <sup>th</sup> November 2024	20 <sup>th</sup> December 2024
Spring Term 2025	6 <sup>th</sup> January 2025	14 <sup>th</sup> February 2025
	24 <sup>th</sup> February 2025	4 <sup>th</sup> April 2025
Summer Term 2025	22 <sup>nd</sup> April 2025	23 <sup>rd</sup> May 2025
	4 <sup>th</sup> June 2025	22 <sup>nd</sup> July 2025

### PURCHASING SCHOOL ITEMS

If you wish to purchase a school item this can now be done through Arbor. If you make a purchase please email the school office at [stannsce@three-saints.org.uk](mailto:stannsce@three-saints.org.uk) so that arrangements can be made to issue the item. Current prices are as follows:

**School Bag £10.00**

**Junior Tie £4.00**

**Elasticated Tie £3.50**

**Children's University Passport £5.00**

**Replacement Home School Diary £5.00**

**Courtesy**

**Care**

**Concentration**



**St. Ann's Church of England Primary School**

View Road, Rainhill, Merseyside, L35 0LQ

Tele: 0151 426 5869

Website: <http://www.rainhillstanns.co.uk>

Email: [stannsce@three-saints.org.uk](mailto:stannsce@three-saints.org.uk)

Twitter: [@RainhillStAnns](https://twitter.com/RainhillStAnns)

Headteacher: Mrs Laura Rynn

‘But those who trust in the Lord, they will find new strength.  
They will soar high on wings like eagles’ **Isaiah 40:31**

**Parents' Suggestion/Comment Slip**

# TOAST

YEARS 1-6

If you would like your child to have Toast every half term please see below for the amount due each half term and the date the amount is required by. Payments should be made to your Arbor Toast account. Payments can be made in advance of these dates if you wish and the credit will be used once the due date arrives.

	Amount Due	Date Toast Account to be in credit by
Autumn 1	£9.50	Midday 16th July 2024
Autumn 2	£8.50	Midday 15th October 2024
Spring 1	£7.50	Midday 17th December 2024
Spring 2	£7.50	Midday 7th February 2025
Summer 1	£6.00	Midday 26th March 2025
Summer 2	£8.75	Midday 20th May 2025

Total for year £47.75

DATES FOR DIARY

DAY	DATE	EVENT
Friday	13 <sup>th</sup> December 2024	Christmas Jumper Day
Monday	16 <sup>th</sup> December 2024	KS1 Nativity 9.30am – 10.30am (1/4) KS1 Nativity 2-3.00pm (2/4)
Tuesday	17 <sup>th</sup> December 2024	KS1 Nativity 9.30am – 10.30am (3/4) KS1 Nativity 2-3.00pm (4/4)
Wednesday	18 <sup>th</sup> December 2024	EY's Nativity 9.30am-10.30am EY's Nativity 2-3.00pm
Wednesday	18 <sup>th</sup> December 2024	Y2 Christmas Party 1-3.00pm
Thursday	19 <sup>th</sup> December 2024	EY's & Y1 Christmas Party 9-11.00am Y3 & Y4 Christmas Party 1-3.00pm
Friday	20 <sup>th</sup> December 2024	Children's University Passport Bank
Friday	20 <sup>th</sup> December 2024	Y5 & Y6 Christmas Party 9-11.00am
Friday	20 <sup>th</sup> December 2024	Christmas Service @ Church 2.15-3.00pm
Friday	20 <sup>th</sup> December 2024	School Closes