



St Ann's Church of England Primary School



Together, we aim high; with God's love, we can fly!

Value of the Half Term

Compassion

Newsletter Issue 9

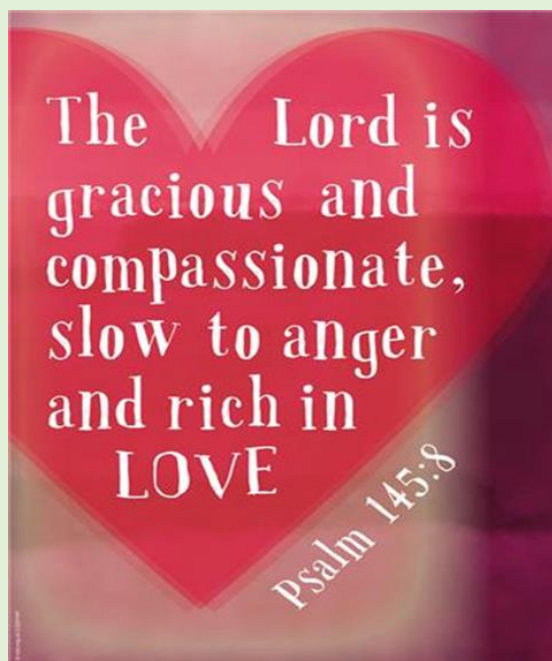
Friday 8 November 2024

He heals the broken-hearted and binds up their wounds.

Psalm 147:3

CONTENTS

1. History Week
2. Bikeability
3. Children In Need/Zoe's Place
4. Parent Forum Vacancies
5. Family Worship
6. Dangerous Driving and Parking
7. Flooding around school
8. Early Years Parent Insight
9. A Spotlight on Phonics
10. Job Vacancies
11. Month in Sport
12. Applying for School places
13. Y6 Swimming
14. Wanted: Games for Chess & Chill club
15. Mellors School Meals
16. Safeguarding
17. General Information/Reminders



HISTORY WEEK

This week, our students at St Ann's enjoyed an inspiring and engaging History Week! Each year group focused on a different area of history, including **World War II**, **local history**, or the **Windrush**, providing children with a deep and hands-on understanding of these important topics.

Across the school, children took part in a range of activities, discussions and creative projects that helped bring their learning to life. From exploring life as an evacuee during World War II to discovering the experiences of the Windrush generation, students have had the opportunity to connect with historical events in new and meaningful ways. For children in Year 1 studying local history, a highlight was a visit from the **Rainhill Civic Society**, whose member shared fascinating stories about the Rainhill Trials and how important this was for our local area.

The feedback from both staff and pupils has been wonderful, with many students eager to share what they've learned and how history has influenced the world around us. It has been a fantastic week and we encourage you to ask your children about what they've been learning—they'll be excited to tell you all about it!



KIDS GET THEIR SUPER POWERS BY
**ATTENDING SCHOOL
 EVERY DAY** ⚡

BE AN ATTENDANCE
 SUPERHERO!

Whole school attendance year to date <i>Whole School target 96%</i>	97.01%
Whole school attendance week ending 25 th October 2024	96.88%
Class with best weekly attendance	6A – 99.67%

Attendance Expectations

Children are expected to be in school **every day** unless they are unwell. All other reasons will be unauthorised. If your child is going to be absent, contact school and let us know before 9.20am. Children not in school may receive a phone call home or home visit. In line with our Attendance Policy, we are committed to supporting families in improving their child's attendance, before taking legal action.

#EveryMomentMatters

Number of pupils with 100% attendance this week

369

Punctuality

School starts at **8.50am**.
 Lessons start at **8.50am**.

School gates open at 8.40am.

Children arriving after 8.50am will need to use the main entrance. Children who enter school via the main entrance will be registered as late. Regularly missing the beginning of lessons has a negative impact on a child's progress and wellbeing.



BIKEABILITY

We are excited to announce that St Ann's has booked Bikeability sessions for some of our students! Identified Year 3 and 4 children, **who are unable to ride a bike unaided**, will participate in 'Learn to Ride' sessions. These will take place on 18 November (3D), 19 November (3E), and 20 November (4S and 4H). *Please note, this is a change from the dates provided in the original letter sent to parents.* However, all other details, including consents, remain the same. Additionally, Year 5 children will take part in 'Level 1 + 2' Bikeability sessions from Tuesday 15 October to Thursday 24 October. We are sure you will agree that this is a hugely beneficial experience for our children.



If you have any questions, please contact Miss Foster.

PARENT FORUM VACANCIES



We have a number of vacancies on this year's Parent Forum. We are keen to fill these, so if you are interested please contact Mrs Rynn via the school office. We look forward to hearing from some parents/carers soon.

CHILDREN IN NEED & ZOE'S PLACE



On **Friday 15 November**, children are permitted to wear their own clothes and Children in Need accessories to school for a donation towards the charities Children in Need & Zoe's Place. Cash donations can be made on the day. The suggested donation is £1 per child. Mrs Preston will lead a worship all about the charities nearer to the time.



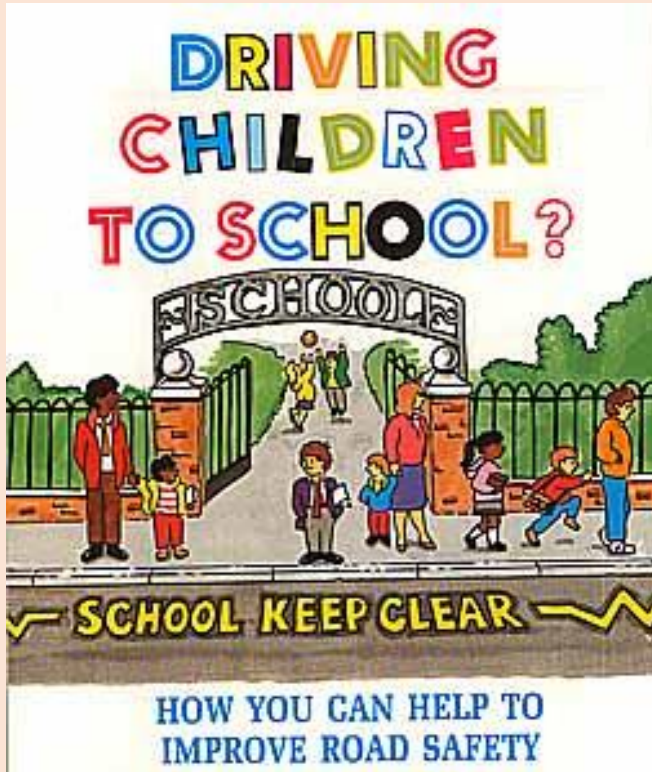
FAMILY WORSHIP

Well done to 5BF on a wonder Family Worship.

On **Thursday 21 November at 9.00am**, 5G will lead Family Worship of the academic year in the hall. Please wait at the back of school by the hall door ready to be let in.

PLEASE NOTE THE DAY AND TIME.





DANGEROUS DRIVING AND PARKING

Unfortunately, even following regular polite requests and reminders from school about driving and parking safely and considerately for our pupils and families, this continues to be a major concern for us.

Moving forward we would urge all parents to report dangerous and illegal driving and parking to the Police. This is really straight forward to do. You can use the **Merseyside Police Facebook page** or **dial 101**. Simply report the car make, model and registration plate. By working together, we hope to improve the situation for our pupils and families.

If you drive your child to school, you can help us by parking further away from the school grounds and walking. You just need to give yourselves an extra 10 minutes in the morning and evening. Thank you

DON'T FORGET...

School is closed to pupils on Friday 22 November 2024

FLOODING AROUND SCHOOL

Following heavy rain, we are aware that access to our school site can become tricky. On the occasions when this happens the small gate in the visitor car park at the front of school will be opened as an additional access route. In the meantime we will continue to work to remedy the issue.

EARLY YEARS PARENT INSIGHT

Thank you to all those parents/ carers who attended Parent Insight this week. We hope you found the session to be useful and informative.



A SPOTLIGHT ON PHONICS



At St Ann's, we believe that every child deserves to have a strong start to reading, learning the skills required to decode and understand texts. To support children in developing these early reading skills, we teach phonics using 'Read Write Inc', a Department for Education approved synthetic phonics programme. Read Write Inc teaches children sounds in

English, the letters that represent them, and how to form the letters when writing.

What is Read Write Inc. Phonics?

RWI is an early phonics and reading programme that provides a structured and systematic approach to teaching phonics and early literacy. It follows an interactive approach which includes a number of short tasks so that children are involved and engaged throughout the whole session. It is designed to create fluent, independent readers, confident speakers, independent spellers and willing writers. The National Curriculum states that all children should be taught phonics systematically. Read Write Inc, ensures that our phonics teaching follows a systematic progression that allows our children to develop a secure knowledge of the sounds each letter or combination of letters makes. This sound knowledge can they be used by children to read new words and to spell new words when writing.

RWI links phonics with reading and writing. During a typical RWI session, children will learn a new letter sound and practise reading words containing that sound. They will learn the formation of the letters and write words using the new taught sound with an emphasis on spelling. Following this, children are introduced to their book for the session which is linked to the new letter sounds learnt.

Phonics Reading Books

Children read books that are carefully matched to their phonics knowledge and the sounds they have learnt in their phonics session. The children will not read books that contain spellings of sounds that they do not know. This means they build confidence quickly and become independent readers. They are taught reading strategies that they can employ in their reading of the text and work with their reading partner to read through the books.

Children practise reading their phonics books until they can read them fluently and then they bring the book home to read to you. They learn to form letters correctly and develop a strong handwriting style. Read Write Inc. ensures that your child learns to read and write successfully.

Helping at Home

Reading great stories aloud is the best thing you can do to support your child. Having a daily story time, reading your school book and enjoying books together will support your child in making progress in phonics.

Parents can find more information on phonics and making story times engaging on the Read Write Inc. website www.ruthmiskin.com and clicking on the parent tab at the top of the page.





SPORTS NEWS

SEPTEMBER/
OCTOBER 2024

COMPETITIONS



PE LESSONS



**DURING OUR PE LESSONS THIS HALF TERM
KS2 HAVE FOCUSED ON FUNDAMENTALS AND
TAG RUGBY!**

**CHECK OUT OUR SOCIAL
MEDIA POSTS FOR
UPDATES ON BOTH PE
LESSONS IN SCHOOL
AND COMPETITIONS**

@STANNSRAINHILL

JOB VACANCY AT ST ANN'S

Level 2 Teaching Assistant

The Three Saints Academy Trust is committed to safeguarding and promoting the welfare of its pupils and expects all those working within the trust to share this commitment. All offers of employment are subject to an Enhanced DBS check, and where applicable, a prohibition from teaching check will be completed for all applicants.

Visits to the school are encouraged and warmly welcomed. Please telephone to arrange an appointment (0151 426 5869).

Application Process:

The application pack is available on <http://www.three-saints.org.uk/index.php/vacancies/>. CVs will not be accepted.

Closing Date & Short-listing: Friday 8 November 2024

Interviews: Friday 15 November 2024

We are seeking to appoint a highly motivated, enthusiastic and talented teaching assistant to join our outstanding primary school, and who shares our vision for providing a first-class education and instilling all our children with a love of learning.

Who we are looking for:

We are looking for an exceptional teaching assistant who

- Likes working with all children and will be their advocate
- Enjoys the challenge of supporting pupils with complex learning/ pastoral needs
- Is passionate and enthusiastic for learning
- Has high expectations for all children
- Can establish good working relationships with children, staff and parents
- Can take direction and work on own initiative
- Can work as part of a team
- Promotes positive behaviour relentlessly
- Is hard working and conscientious
- Is resilient to set backs
- Sees a challenge as an opportunity
- Is an excellent communicator
- Is organised and efficient
- Is friendly and flexible
- Is professional and positive
- Understands confidentiality



St Ann's is an over-subscribed, two form entry Church of England primary school, with a strong track record of achievement and an outstanding judgement from Ofsted and excellent from SIAMs. We nurture and care for our children in a Christian ethos, placing our children and their family at the centre of our work. Our children are encouraged to be independent, creative and reflective learners who can self-manage, work within a team and effectively participate and communicate.

APPLY FOR YOUR PRIMARY OR SECONDARY SCHOOL PLACE NOW!

APPLYING FOR A PRIMARY SCHOOL PLACE FOR SEPTEMBER 2025

You will be notified on 16 April 2025 confirming your child's school place.

The closing date for you to submit your application is 15 January 2025.

APPLYING FOR A SECONDARY SCHOOL PLACE FOR SEPTEMBER 2025

You will be notified on 3 March 2025 confirming your child's school place.

The closing date for you to submit your application is 31 October 2024.

YEAR 6 SWIMMING



Children who are yet to achieve the national swimming standard will swim every day from Tuesday 19 November to

Friday 22 November inclusive.

If your child is attending the lessons, you will receive a separate letter with further details.

WANTED:

GAMES FOR CHESS & CHILL OUT CLUB

If you are having a sort out before Christmas and looking to dispose of small board or card games, please consider sending them into school so that we can make use of them in our Chess & Chill Out lunchtime club. Thank you for thinking of us!

MELLOR'S SCHOOL MEAL MENU

For a copy of Mellor's most up to date school meals menu, please check out our website by clicking on the following link:

<https://www.rainhillstanns.co.uk/page/?title=School+Dinner+Menu&pid=46>

Please note, the menu is subject to change where there is a shortage of supplies.

SAFEGUARDING TOP TIP #8:

Stress

Lots of different things can cause stress and it can feel difficult or like you can't cope.

But you can manage stress, here are some tips that can help you get it under control.

Sometimes stress can be helpful, it can motivate you to get things done. Or help you see that things need to change.

5 things that you can try

1. writing or drawing how you feel
2. exercise and sports
3. planning what you do
4. having healthy food and drink
5. take deep breaths.

For more advice visit

<https://www.childline.org.uk/info-advice/your-feelings/anxiety-stress-panic/coping-with-stress/>





What **RULES** do **YOU SET** about being online?

Information their child can share online (49%)

Spending money online (52%)

Who you can interact with online

While parental concerns in some areas have increased considerably, their **enforcement of rules appears to be diminishing**, partly because of **resignation** about their **ability to intervene** in their children's online lives.

Types of websites and apps they can use (41%)

Where and when devices can / can't be used

Video content their children are allowed to watch online (67%)



Source: Children and parents: media use and attitudes report 2024

AN E-SAFETY POSTER CREATED BY ONE OF KS1 PUPILS DURING THEIR COMPUTING CLUB

Stay safe online



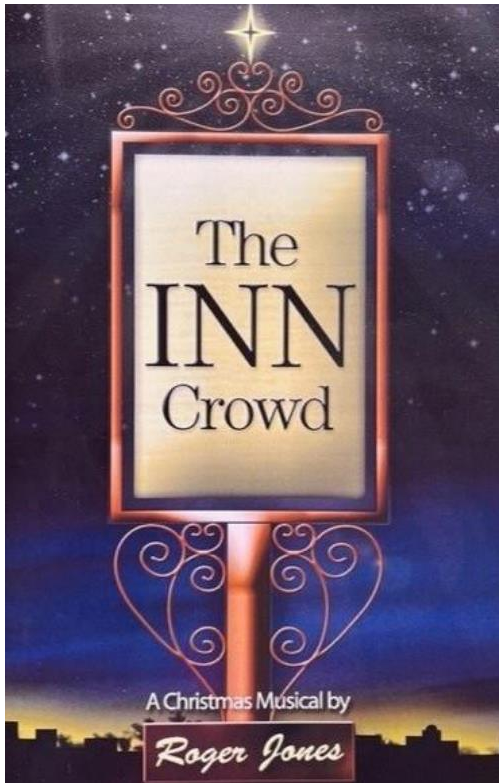
Use strong passwords



Be careful what you post online



Not everyone is who they say they are



Saturday November 16th, 2024

7.30pm

A musical drama

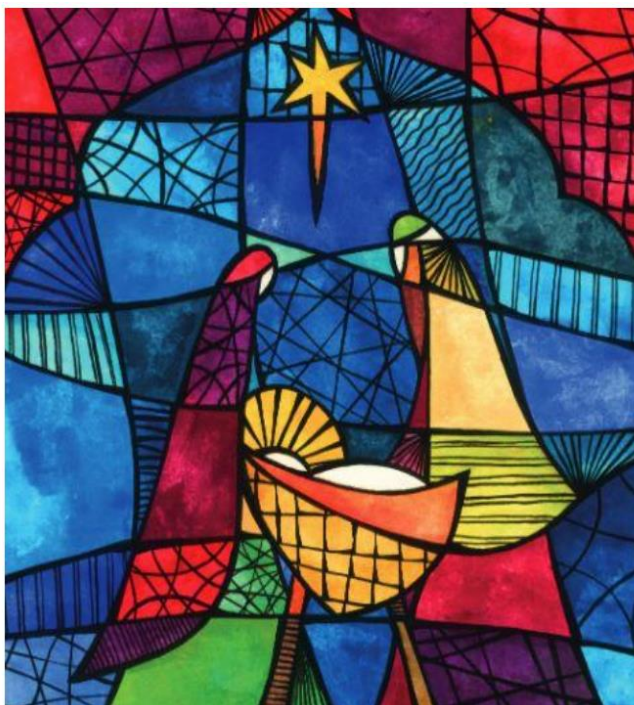
The Christmas story from the
perspective of the innkeeper
and his wife

Suitable for all the family

Free entry

Retiring collection for Christian Music Ministries
and St Ann's Church

Performance authorised by Christian Music
Ministries/Sovereign Music UK



(Stained glass window: a Christmas card from Compassion)

St Ann's Church Rainhill

Community Carol Service

Sunday December 15th

6.30pm

Rainhill Community Choir
and

St Ann's School Choir

Free entry

All places for
Friday 6th
December have
been allocated

Santa is coming!

ho
ho



2ND, 3RD
OR 6TH
DEC.

Breakfast with Santa

ALL CHILDREN WILL RECEIVE A FESTIVE
BREAKFAST, PHOTOGRAPH AND A
SELECTION BOX!

• £8 PER CHILD • BREAKFAST WILL START AT 8AM

Sign up for breakfast via Arbor by
Friday 15th November

PLEASE INDICATE WHICH SESSION YOU WOULD LIKE
YOUR CHILD(REN) TO ATTEND WHEN PAYING VIA
ARBOR



ATTENDANCE REWARD RAFFLE

At St Ann's we are relentless in our focus on attendance because we want the best for our pupils. The research speaks for itself, children with strong levels of attendance, fulfil their full potential and develop the skills and personal qualities required for a happy and fulfilled life.

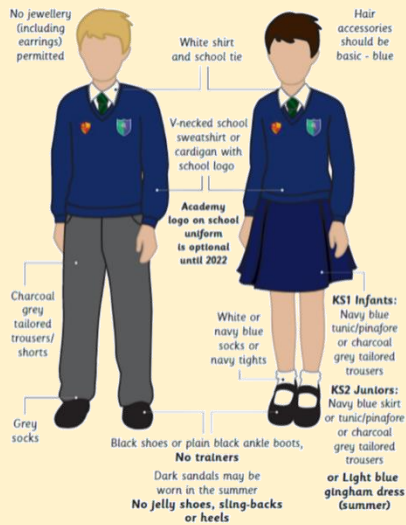
Prize £50 Amazon Voucher

All children with **96%+ attendance**, and who have not taken a holiday during term time, by **Friday 20 December** will be entered into the next Attendance Raffle. **GOOD LUCK** 😊



GENERAL INFORMATION/WEEKLY REMINDERS

SCHOOL UNIFORM REMINDERS



**Please note, it is not compulsory to wear items of clothing with the school and Trust logos on. Children may wear plain navy-blue items of school uniform.*

SCHOOL SHOES REMINDER



INDIVIDUAL HEALTH CARE PLANS

If you have notified school that your child has a medical condition that requires an Individual Health Care Plan please ensure that if there are any changes to their condition a new form is completed.

If your child has a newly diagnosed condition that requires an Individual Health Care Plan please contact the school office to arrange for a form to be completed.

TOAST (Y1-Y6 ONLY)

The deadline for toast (Y1-6) for this half term has now passed. Please see the flyer attached to this newsletter for details of the payments required for future half terms.

EARLY YEARS SNACK

Early Years children receive snack on a daily basis. We would be grateful if you would make payment on Arbor of the following amounts by the due dates:

Autumn 2 - £11.90 – as soon as possible if not already done so

Spring 1 - £10.50 – 17th December 2024

Spring 2 - £10.50 – 7th February 2025

Summer 1 - £8.40 – 26th March 2025

Summer 2 - £12.25 – 20th May 2025

CONTACT DETAILS, CONSENT & PERMISSIONS

On a regular basis please check your contact details, consent and permissions on Arbor to make sure they are up to date for your child. Thank you

MESSAGE FROM ST ANN'S CHURCH RE PARKING

As most of you are already aware a parking system is being installed at the moment. The reason for this is to preserve the parking spaces for those attending church and the Centre. We have had an issue for several years with people parking in the Centre to go to work or to travel further afield by bus and train, this has meant that Centre users have struggled to park.

We have attempted to resolve this by speaking to those parking and whilst most people have been understanding and parked elsewhere several people have been nothing short of abusive to our volunteers and continued to park regularly.

The car park will continue to be free of charge to use, please remember when you arrive in church or the Centre to enter your correct vehicle registration into the tablet provided.

School drop off and pick up will be allowed and the cameras disabled for this period each day. If you are being dropped off at church or the Centre or being collected from the same, the person driving you will have up to 19 minutes & 59 seconds without needing to enter their vehicle registration.

TERM DATES 2024-25

Term	Open on	Close on
Autumn Term 2024	4 th September 2024	25 th October 2024
	4 th November 2024	20 th December 2024
Spring Term 2025	6 th January 2025	14 th February 2025
	24 th February 2025	4 th April 2025
Summer Term 2025	22 nd April 2025	23 rd May 2025
	4 th June 2025	22 nd July 2025

PURCHASING SCHOOL ITEMS

If you wish to purchase a school item this can now be done through Arbor. If you make a purchase please email the school office at stannsce@three-saints.org.uk so that arrangements can be made to issue the item. Current prices are as follows:

School Bag £10.00

Junior Tie £4.00

Elasticated Tie £3.50

Children's University Passport £5.00

Replacement Home School Diary £5.00

Courtesy

Care

Concentration



St. Ann's Church of England Primary School

View Road, Rainhill, Merseyside, L35 0LQ

Tele: 0151 426 5869

Website: <http://www.rainhillstanns.co.uk>

Email: stannsce@three-saints.org.uk

Twitter: [@RainhillStAnns](https://twitter.com/RainhillStAnns)

Headteacher: Mrs Laura Rynn

‘But those who trust in the Lord, they will find new strength.

They will soar high on wings like eagles’ **Isaiah 40:31**

Parents' Suggestion/Comment Slip

TOAST

YEARS 1-6

If you would like your child to have Toast every half term please see below for the amount due each half term and the date the amount is required by. Payments should be made to your Arbor Toast account. Payments can be made in advance of these dates if you wish and the credit will be used once the due date arrives.

	Amount Due	Date Toast Account to be in credit by
Autumn 1	£9.50	Midday 16th July 2024
Autumn 2	£8.50	Midday 15th October 2024
Spring 1	£7.50	Midday 17th December 2024
Spring 2	£7.50	Midday 7th February 2025
Summer 1	£6.00	Midday 26th March 2025
Summer 2	£8.75	Midday 20th May 2025

Total for year £47.75

DATES FOR DIARY

DAY	DATE	EVENT
Mon-Wed	18 th -20 th November 2024	Year 3/4- Bikeability
Thursday	21 st November 2024	5G Family Worship 9-9.30am
Friday	22 nd November 2024	School closed for Inset Day
Friday	29 th November 2024	4S Family Worship 9-.30am
Friday	6 th December 2024	4H Family Worship 9-9.30am
Friday	13 th December 2024	Christmas Jumper Day
Monday	16 th December 2024	KS1 Nativity 9.30am – 10.30am (1/4) KS1 Nativity 2-3.00pm (2/4)
Tuesday	17 th December 2024	KS1 Nativity 9.30am – 10.30am (3/4) KS1 Nativity 2-3.00pm (4/4)
Wednesday	18 th December 2024	EY's Nativity 9.30am-10.30am EY's Nativity 2-3.00pm
Wednesday	18 th December 2024	Y2 Christmas Party 1-3.00pm
Thursday	19 th December 2024	EY's & Y1 Christmas Party 9-11.00am Y3 & Y4 Christmas Party 1-3.00pm
Friday	20 th December 2024	Children's University Passport Bank
Friday	20 th December 2024	Y5 & Y6 Christmas Party 9-11.00am
Friday	20 th December 2024	Christmas Service @ Church 2.15-3.00pm
Friday	20 th December 2024	School Closes