



St Ann's Church of England Primary School



Together, we aim high; with God's love, we can fly!

Value of the Half Term

Endurance

Newsletter Issue 16

Friday 12 January 2024

So that you may live a life worthy of the Lord and please him in every way: bearing fruit in every good work, growing in the knowledge of God, being strengthened with all power according to his glorious might so that you may have great endurance and patience.

Colossians 1:10

CONTENTS

1. Stand Up Speak Up Week
2. A Spotlight on: Character Education
3. Welcome Miss Murphy
4. Parent Forum
5. Family Worship
6. Parent Workshops
7. Wind in the Willows
8. Star Day
9. Safeguarding Top Tip #15
10. St Ann's Has Got Talent
11. Numbots and TimesTable Rockstars
12. Term Dates 2024-25
13. Job Vacancies
14. General Information/Reminders



STAND UP SPEAK UP WEEK

This week in school was our annual 'Stand Up Speak Up Week' with a focus on Social Justice. The aim of Stand Up Speak Up week is to encourage our children to become activists and achieve a better more sustainable future for all. During this week, children have been looking at a range of famous faces who have campaigned for change; promoted equality and diversity or link to social justice. These famous faces include Florence Nightingale, Michelle Obama, Mahatma Gandhi, Olive Morris, Corazon Aquina, Harriet Tubman and Ruth Bader Ginsburg. Miss Foster led a worship on Wednesday to launch Stand Up Speak Up week.



KIDS GET THEIR SUPER POWERS BY
**ATTENDING SCHOOL
EVERY DAY** ⚡

BE AN ATTENDANCE
SUPERHERO!

Whole school attendance year to date <i>Whole School target 96%</i>	96.06%
Whole school attendance week ending 22 nd December 2023	93.64%
Class with best weekly attendance	6A – 98.33%

Attendance Expectations

Children are expected to be in school **every day** unless they are unwell. All other reasons will be unauthorised. If your child is going to be absent, contact school and let us know before 9.20am. Children not in school may receive a phone call home or home visit. In line with our Attendance Policy, we are committed to supporting families in improving their child's attendance, before taking legal action.

**Number of pupils
with 100% attendance
this week**

377

Punctuality

School starts at **8.50am**.
Lessons start at **8.50am**.

School gates open at 8.40am.

Children arriving after 8.50am will need to use the main entrance. Children who enter school via the main entrance will be registered as late. Regularly missing the beginning of lessons has a negative impact on a child's progress and wellbeing.



**Miss
School
Miss
Out**

If you're not going to school
you will miss out on...





Learning
new skills



Your
friends



Support
and help



School
activities



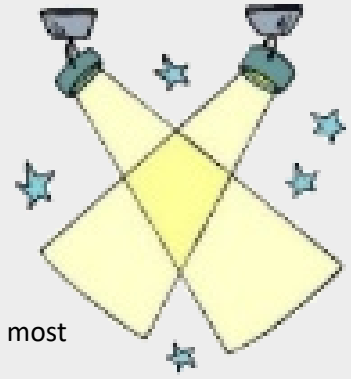
Having
fun

Being in school and on time is good for you.
90% attendance may look impressive but it means missing 19 days of education in a year.
Don't be one of the few to miss school and miss out!
If you need help with school attendance,
please talk to your school for advice




A SPOTLIGHT ON: CHARACTER EDUCATION

Character Education is the wider personal development of a child beyond the academic. It aims to instil in pupils a number of key characteristics and values such as resilience, honesty, motivation and humility, all of which will help them in their adult lives.



At St Ann's, **pupils' character** is developed in numerous meaningful ways but most notably through the following:

- Our **Super Leaders** initiative gives pupils the qualities they need to flourish in society by teaching them to be responsible, respectful and active citizens in public life. Each child is a member of an advocacy team which campaigns for change. By the end of each academic year, each team has made a difference to our school, local or global community e.g. Rights Respecting Parliament developed a child-friendly safeguarding policy and film, Health and Safety Team have promoted Road Safety, Town Troopers have led on charity work to make up food hampers for local families and Food Bank, our Global Ambassador made environmentally friendly reindeer food and our Equality Advocates designed a logo which is displayed in all classrooms and which celebrates equality and inclusion. Our pupils take citizenship so seriously that many raise money for charity in their own time.
- We are a **silver UNICEF Rights Respecting School** (soon to be Gold). This is central to developing pupils' character as the promotion of equality, dignity, respect and non-discrimination lie at the heart of achieving the award.
- During **Stand Up Speak Up Week** children become courageous advocates, standing up for the poor, marginalised or the rights of children globally. The aim of the week is to create the confidence that we can make a real change in the face of adversity. During SUSU Weeks, children have studied social issues such as climate change and the education of women. Stimuli for the week has been a whole school shared book or learning about children around the world who have been agents of change such as Malala or Greta Thunberg. Tangible outcomes of the children's work have shown the children to be strong in their convictions.
- **STAR Day** is our annual charity fundraising day whereby each year group chooses a charitable cause to raise awareness of and fund-raise for.
- Our **extra- curricular provision** is wide ranging and inclusive, offering team and individual opportunities and include a variety of activities so that all pupils can develop existing interests and explore new ones. It is high quality, usually delivered by experts in their field, and aims to challenge and build knowledge and skills. Extra-curricular provision provides opportunities for children to perform and compete and their success is acknowledged and celebrated.
- Our **Curriculum for Behaviour** demonstrates clearly to the children that discipline and good behaviour in school is vital. Our 3Cs promote positive character traits for life – courtesy, care and concentration.

CHARACTER
EDUCATION

WELCOME MISS MURPHY



We are delighted to introduce to you to **Miss Murphy**, our new school Attendance Officer and Therapeutic Support Teaching Assistant. Miss Murphy will work alongside Mrs Crowther, our Family Support Worker. Her role will involve working alongside our families and children to improve attendance and support pupil mental health and wellbeing to remove barriers to learning.

Many will already know Miss Murphy as she has been working as a Teaching Assistant in Year 3 since the beginning of the year. We are confident everyone will offer Miss Murphy a special St Ann's welcome as she commences in her new role.

PARENT FORUM

We have Parent Forum Rep vacancies in the following classes and keen to fill them.
EYR, 5B, 5D & 6A.

If you are interested in being a Parent Rep, please contact school on stannsce@three-saints.org.uk

FAMILY WORSHIP

On **Friday 19 January at 9am 3E** will lead their Family Worship in the hall all about World Religion Day. Please wait at the back of school by the hall door ready to be let in.



PARENT WORKSHOPS

Week commencing Monday 15 January our teachers will be holding after school workshops at 5pm for parents/ carers. Please see below for the dates, time and entrances.

YEAR GROUP	DATE	FOCUS	ENTRANCE
EARLY YEARS	Monday 15 January	Personal Social & Emotional Development	Blue Base door
YEAR 1		Phonics Screening Check	Front gate
YEAR 2	Tuesday 16 January	SATs	Front gate
YEAR 3		Reading and Times Tables	Main entrance
YEAR 4	Wednesday 17 January	Multiplication Times Table Check	Main entrance
YEAR 5		Reading and Times Tables	Front gate
YEAR 6	Thursday 18 January	SATs	Front gate

WIND IN THE WILLOWS

We are delighted to announce that this year's end of year school production, which will be led by Y6, will be the musical; Wind in the Willows. The production will be directed by First Act Arts Ltd and be performed in the Village Hall on 8th and 10th July 2024.



Watch this space for further information.

STAR DAY



This half term STAR DAY will take place once again at St Ann's. STAR DAY is a fantastic opportunity for our school community to come together and raise money to support local, national and global charities that are making a difference to others in our world.

This year STAR DAY will take place on Friday 9th February. Further details regarding the charities each year group will be supporting and activities taking place will follow shortly.



SAFEGUARDING TOP TIP #15

Keeping your child safe

Talk PANTS helps children to understand that their body belongs to them, and they should tell someone they trust if anything makes them feel upset or worried.

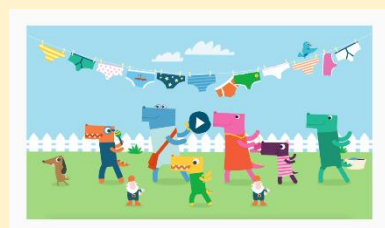
To help you start the conversation with your child we recommend watching the PANTS video.

<https://www.nspcc.org.uk/keeping-children-safe/support-for-parents/pants-underwear-rule/>



What are the PANTS rules?

1. Privates are PRIVATE.
2. Always remember your body belongs to YOU.
3. No means NO.
4. Talk about secrets that upset you-REMEMBER there are good and BAD secrets.
5. Speak up, someone can help.



COMING SOON... ST ANN'S HAS GOT TALENT SHOW



Thank you to everyone who has already applied to take part in this year's Talent Show. We are really excited!

We have extended the deadline for applications to 17th January and look forward to receiving more entries.

If your child would like to be considered for the role of Host in the show please complete the application form attached to this Newsletter.

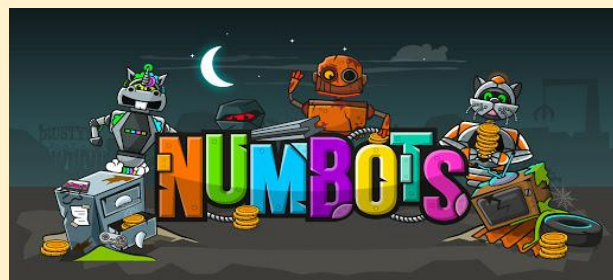
NUMBOTS & TIMESTABLE ROCKSTARS

Daily use of Numbots and TTRockstars has been proved to boost number and times table recall speed significantly, impacting positively on children's Mathematical Development. Just as the expectation at St Ann's is to read for 5 out of every 7 days each week, the expectation to access either Numbots (EYs-Y2) or TTRockstars (Y2-Y6) is the same

The table below shows the number of children who have accessed the programmes in the last 7 days. You can show that your child has accessed either of the programmes by simply ticking the logo off in their home school diary. Let's do this!

1M	1T	2H	2O	3E	3H	4C	4S	5B	5D	6A	6M
4	5	3	4	5	2	30	21	1	1	2	4

Most Improved



Year 1: Emilie R & Grace B

Year 2: Dylan C & Samskrithi S



Year 3: Ellie H & Mila W

Year 4: Joel L & Thomas R

Year 5: Maisie B & Steven S

Year 6: Francesca R & Noah S

TERM TIME DATES FOR 2024-25

Term	*Open On:	*Close On:
Autumn term 2024	4 th September 2024	25 th October 2024
	4 th November 2024	20 th December 2024
Spring term 2025	6 th January 2025	14 th February 2025
	24 th February 2025	4 th April 2025
Summer term 2025	22 nd April 2025	23 rd May 2025
	4 th June 2025	22 nd July 2025

Easter Bank Holidays:

Good Friday: 18th April 2025

Easter Monday: 21st April 2025

Bank Holidays during term time:

May Day: Monday 5th May 2025



ST ANN'S
CHURCH OF ENGLAND PRIMARY SCHOOL
PART OF THE THREE SAINTS ACADEMY TRUST

Watch this space

St Ann's Friends Association

coming soon...



Do you have any time to spare to help run an event?



Could your workplace donate a raffle prize or sponsor an event?



Does your workplace have a match giving scheme for employees?



Do you have any skills or talents to share with our school?

Come and find out more on
Friday 2 February 2024, 2pm at St Ann's

JOB VACANCIES AT ST ANN'S

Level 2 Teaching Assistant Level 3 Teaching Assistant

The Three Saints Academy Trust is committed to safeguarding and promoting the welfare of its pupils and expects all those working within the trust to share this commitment. All offers of employment are subject to an Enhanced DBS check, and where applicable, a prohibition from teaching check will be completed for all applicants.

Visits to the school are encouraged and warmly welcomed. Please telephone to arrange an appointment (0151 426 5869).

Application Process:

The application pack is available on <http://www.three-saints.org.uk/index.php/vacancies/>. CVs will not be accepted.

Closing Date & Short Listing: Monday 22 January 2024

Interviews: Monday 29 January 2024

We are seeking to appoint some highly motivated, enthusiastic and talented people to join our outstanding primary school, and who shares our vision for providing a first-class education and instilling all our children with a love of learning.

We are looking for people who:

- Like working with children
- Are passionate and enthusiastic for learning
- Can establish good working relationships with children, staff and parents
- Can take direction and work on own initiative
- Can work as part of a team
- Promote positive behaviour
- Are hard working and conscientious
- Are excellent communicators
- Are organised and efficient
- Are friendly and flexible
- Are professional and positive
- Understand confidentiality



St Ann's is an over-subscribed, two form entry Church of England primary school, with a strong track record of achievement and an outstanding judgement from Ofsted and excellent from SIAMs. We nurture and care for our children in a Christian ethos, placing our children and their family at the centre of our work. Our children are encouraged to be independent, creative and reflective learners who can self-manage, work within a team and effectively participate and communicate.

What we can offer you:

We can offer you:

- fantastic children with a positive attitude towards learning and excellent behaviour;
- the support of a dedicated, committed and creative staff team;
- the opportunity to be part of an outstanding school;
- a school already established in developing practitioners and nurturing its staff because of its unrivalled opportunities for professional development through the Northwest Learning Partnership and NW3 Maths Hub which are within our MAT;
- an engaging, bespoke curriculum;
- supportive School Committee, Directors and parents

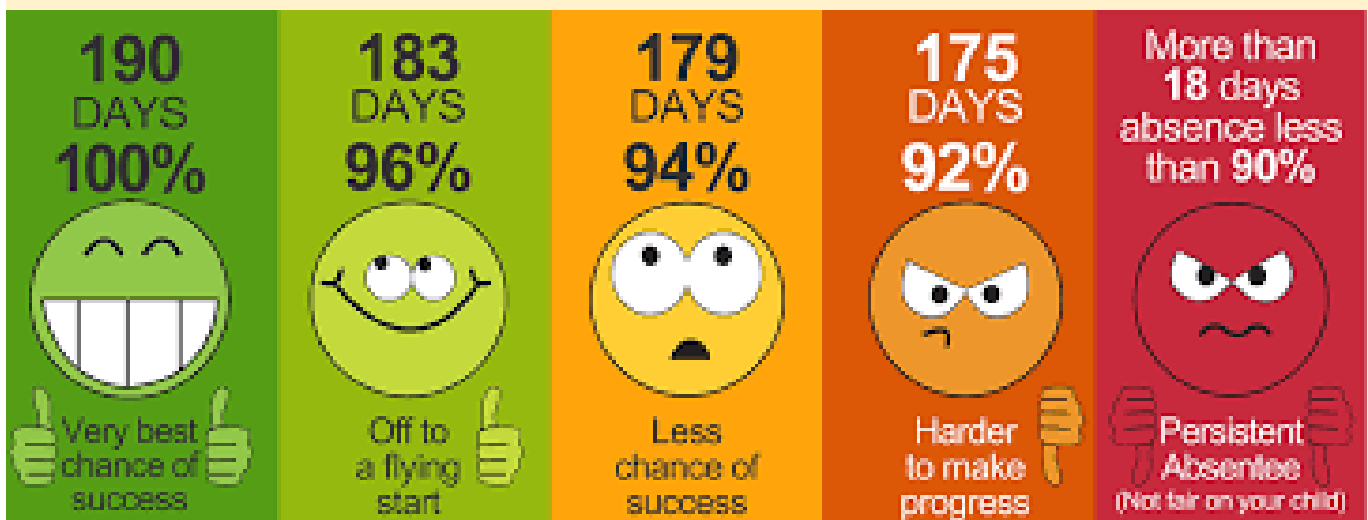


ATTENDANCE REWARD RAFFLE

At St Ann's we are relentless in our focus on attendance because we want the best for our pupils. The research speaks for itself, children with strong levels of attendance, fulfil their full potential and develop the skills and personal qualities required for a happy and fulfilled life.

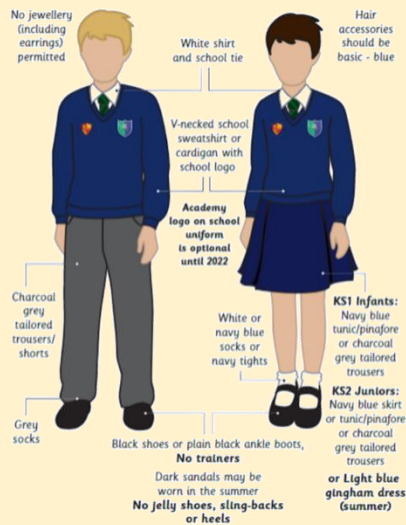
Prize £50 Amazon Voucher

All children with **96%+ attendance**, and who have not taken a holiday during term time, by **Thursday 28 March** will be entered into the next Attendance Raffle. **GOOD LUCK** 😊



GENERAL INFORMATION/REMINDERS

SCHOOL UNIFORM REMINDERS



**Please note, it is no longer compulsory to wear items of clothing with the school and Trust logos on. Children may wear plain navy-blue items of school uniform.*

SCHOOL SHOES REMINDER



TOAST

The deadline for Toast (Years 1-6) for next half term has now passed. Please see the flyer attached to this Newsletter for details of the payments required for future half terms.

EARLY YEARS SNACK

Foundation stage children receive Snack on a daily basis. We would be most grateful if you would make payment on Arbor of the following amounts by the due dates:

Spring 1 - £7.20 as soon as possible if not already done
SO

Spring 2 - £8.70 by 31st January 2024

Summer 1 - £8.40 by 20th March 2024

Summer 2 - £11.10 by 15th May 2024

TERM DATES

Term	Open on	Close on
Autumn Term 2023	5th September 2023	26th October 2023
	6th November 2023	22nd December 2023
Spring Term 2024	9th January 2024	9th February 2024
	19th February 2024	28th March 2024
Summer Term 2024	15th April 2024	22nd May 2024
	3rd June 2024	23rd July 2024

PURCHASING SCHOOL ITEMS

If you wish to purchase a school item this can now be done through Arbor. If you make a purchase please email the school office at stannsce@three-saints.org.uk so that arrangements can be made to issue the item. Current prices are as follows:

School Bag £10.00

Junior Tie £4.00

Elasticated Tie £3.50

Children's University Passport £3.00

Replacement Home School Diary £4.00

Courtesy
Care
Concentration



St. Ann's Church of England Primary School

View Road, Rainhill, Merseyside, L35 0LQ

Tele: 0151 426 5869

Website: <http://www.rainhillstanns.co.uk>

Email: stannsce@three-saints.org.uk

Twitter: [@RainhillStAnns](https://twitter.com/RainhillStAnns)

Headteacher: Mrs Laura Rynn

‘But those who trust in the Lord, they will find new strength.
They will soar high on wings like eagles’ **Isaiah 40:31**

Parents' Suggestion/Comment Slip

TOAST

YEARS 1-6

If you would like your child to have Toast every half term please see below for the amount due each half term and the date the amount is required by. Payments should be made to your Arbor Toast account. Payments can be made in advance of these dates if you wish and the credit will be used once the due date arrives.

	Amount Due	Date Toast Account to be in credit by
Autumn 1	£9.50	13th July 2023
Autumn 2	£8.75	18th October 2023
Spring 1	£6.00	19th December 2023
Spring 2	£7.25	31st January 2024
Summer 1	£7.00	20th March 2024
Summer 2	£9.25	15th May 2024

Total for year £47.75

DATES FOR DIARY SPRING 2024

DAY	DATE	EVENT
Monday	15 th January 2024	EYs (Focus TBC) & Y1 (Phonics Screening Check) Parent Workshops, 5pm
Tuesday - Friday	16 th -19 th January 2024	6A Swimming
Tuesday	16 th January 2024	Y2 (SATS) & Y3 (Focus TBC) Parent Workshops, 5pm
Wednesday	17 th January 2024	Y4 (Multiplication Timetable Check) & Y5 (Focus TBC) Parent Workshops, 5pm
Thursday	18 th January 2024	Y6 (SATS) Parent Workshop, 5pm
Friday	19 th January 2024	3E Family Worship 9.00am, school hall
Friday	26 th January 2024	Star Day Charity Fundraising Day
Friday	26 th January 2024	Talent Show Auditions
Friday	26 th January 2024	Friends Association Meeting 2-3.00pm @ school. Everyone welcome.
Thursday	1 st February 2024	Y3 Communion 9.30am @ Church Everyone welcome
Friday	2 nd February 2024	3H Family Worship 9.00am, school hall
Monday-Friday	5 th -9 th February	Parent Insight Sessions – all classes (RE & Christian Distinctiveness)
Wednesday	7 th February 2024	Parent Forum 2.00-3.00pm
Thursday	8 th February 2024	Children’s University Passport Bank
Thursday	8 th February 2024	Friends Disco (TBC)
Friday	9 th February 2024	EYs & KS1 Church Service, 2.15pm Everyone welcome
Friday	9 th February 2024	School Closes
Monday	19 th February 2024	School Opens
Monday	19 th February 2024	Ash Wednesday Service @ Church, 2.15pm. Led by Clergy (not all classes will attend). Everyone welcome
Friday	23 rd February 2024	Friends Association Meeting 2.00-3.00pm @ school. Everyone welcome.
Monday	4 th March 2024	Y5 trip to the Liverpool Philharmonic Hall
Tuesday - Friday	5 th -8 th March 2024	5D Swimming
Thursday	7 th March 2024	Open House Book Look 3.30-4.30pm, all classes
Friday	8 th March 2024	Y4 & Y5 to work with Mersey Forest. Wear PE kits
Friday	8 th March 2024	2H Family Worship 9.00am, school hall
Monday	11 th March 2024	Assessment Week
Tuesday - Friday	12 th -15 th March 2024	5D Swimming
Thursday	14 th March 2024	Kingswood Residential Y4 Parent Meeting
Friday	15 th March 2024	2O Family Worship 9.00am, school hall
Thursday	21 st March 2024	Y4 Communion 9.30am @ Church Everyone welcome
Thursday	21 st March 2024	Easter Bingo
Friday	22 nd March 2024	1M Family Worship 9.00am, school hall
Monday-Thursday	25 th –28 th March 2024	Mentoring Conversations, all classes, days TBC