



# St Ann's Church of England Primary School



*Together, we aim high; with God's love, we can fly!*

## Value of the Half Term

*Trust*

## Newsletter Issue 12

Friday 1 December 2023

Blessed is the man who trusts in the LORD, whose trust is the LORD. He is like a tree planted by water, that sends out its roots by the stream, and does not fear when heat comes, for its leaves remain green, and is not anxious in the year of drought, for it does not cease to bear fruit.

Jeremiah 17:7-8

### CONTENTS

1. Rainhill Christmas Light Switch On
2. A Spotlight on Christian Distinctiveness
3. Assessment Week
4. Family Worship
5. Parent Forum
6. Autumn Mentoring Conversation
7. Outdoor Learning Session
8. Christmas Dinner & Jumper Day
9. Early Years Nativity
10. KS1 Nativity (Y1 & Y2)
11. Christingle Workshop & Service
12. Carol Concert at St Ann's Church
13. Scholastic Book Fair
14. Winter HAF Programme
15. Term Dates 2024-25
16. Safeguarding Top Tip #12
17. General Information/Reminders



### RAINHILL CHRISTMAS LIGHTS SWITCH ON

Huge congratulations to our fabulous KS2 Choir for their performance at the Rainhill Christmas Lights Switch On on Sunday 26 November. As always they sang beautifully and did us proud. We are looking forward to their next performance at St Ann's Church Carol Concert.



KIDS GET THEIR SUPER POWERS BY  
**ATTENDING SCHOOL  
EVERY DAY** ⚡

BE AN ATTENDANCE  
SUPERHERO!

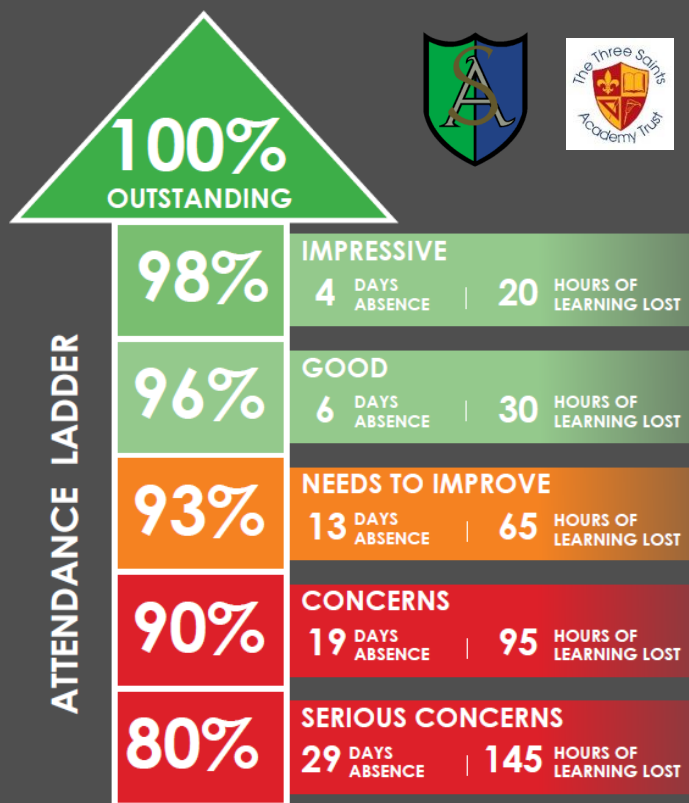
Whole school attendance year to date <i>Whole School target 96%</i>	96.61%
Whole school attendance week ending 24 <sup>th</sup> November 2023	96.37%
Class with best weekly attendance	RR & 1M 98.57%

### Attendance Expectations

Children are expected to be in school **every day** unless they are unwell. All other reasons will be unauthorised. If your child is going to be absent, contact school and let us know before 9.20am. Children not in school may receive a phone call home or home visit. In line with our Attendance Policy, we are committed to supporting families in improving their child's attendance, before taking legal action.

## EVERY DAY COUNTS!

School and **future success** starts with good attendance!



Remember - your education is important - **don't miss out!**

**Number of pupils  
with 100% attendance  
this week**

**361**

### Punctuality

School starts at **8.50am**.  
Lessons start at **8.50am**.

School gates open at 8.40am.

Children arriving after 8.50am will need to use the main entrance. Children who enter school via the main entrance will be registered as late. Regularly missing the beginning of lessons has a negative impact on a child's progress and wellbeing.

## A SPOTLIGHT ON CHRISTIAN DISTINCTIVENESS



Our Christian ethos is characterised by our school vision. The distinctly Christian vision for St Ann's Church of England Primary School is *'Together, we aim high; with God's love, we can fly.'* This vision was agreed in 2019 following a series of workshops and gathering the voice of all members of our community. *'...But those who trust in the Lord, they will find new strength. They will soar high on wings like eagles...'* (Isaiah 40:31) was the inspiration for the vision. Our theologically rooted vision is contextually appropriate for the community we serve and ensures the school lives up to its foundation as a Church school.

As a Church of England primary school we provide the following experiences for our pupils:



- encouragement of mutual respect based on Christian values, where pupils and teachers are able to talk openly and freely about their own personal beliefs and practice without fear of ridicule.
- pupils of all backgrounds to have a safe place to explore the place of doubt and certainty in a maturing faith
- pupils from Christian families to talk openly about their beliefs and values in lessons and to grow in their faith.
- pupils from other faith backgrounds to understand and be encouraged in their faith.
- opportunities to explore the experience of the Church's year.
- visits to places of worship, especially the local parish Church and the Anglican Cathedral, to develop the understanding of the Church as a living community.
- welcoming visitors from the local parish and the community to share their experience of Christian belief and life.
- liaise with the local parish to enable these visits and links to occur
- support for all pupils
- develop a deeper understanding of Christianity of a world wide faith with a range of denominations to extend children's appreciation and understanding of Worship in all its rich variety.
- confident use of religious language.
- a well-used set of Bibles in language that can be understood by the

learners and examples of Bibles and prayer books from a variety of contexts.

- access to Christian artefacts that are used with care, respect and confidence.
- a reflection area in each classroom and several prayer spaces inside and outside school that can be used as a focus for prayer and silent reflection.
- the facility to listen to contemporary and traditional hymns and spiritual songs.
- pupils to make excellent and appropriate progress in their knowledge and understanding of Christianity.

## ASSESSMENT WEEK



Assessment Week will commence Wednesday 29 November and run into the following week.

In order for your child to showcase the progress they have made this term, please ensure they get an early night, are off electronic devices at least an hour before bedtime, and eat a nutritious breakfast.

## FAMILY WORSHIP



Well done to 4S for their Family Worship all about Universal Children's Day

On **Friday 8 December at 9am 4C** will lead their Family Worship in the hall all about International Day for Persons with Disabilities. Please wait at the back of school by the hall door ready to be let in.



## School Admissions Calendar: 2024-2025 School Year Intakes

	Closing Dates for Applications	Letter/Email to Parents
Secondary (portal opened 4th September 2023 closes 31st October 2023)	31 October 2023	1 March 2024
Primary (portal opens 18th September 2023 closes 15th January 2024)	15 January 2024	16 April 2024
Nursery Autumn 2024 Intake (portal was open 12 June 2023 -21 July 2023)	21 July 2023	22 September 2023
Nursery Spring 2025 Intake	19 July 2024	20 September 2024
Nursery Summer 2025 Intake	19 July 2024	20 September 2024

For further information please contact the School Admissions Section on 01744 671035 (Nursery and Primary Allocations), 01744 671030 (Secondary Allocation) and 01744 671027 (In Year Transfers).



## PARENT FORUM

We have Parent Forum Rep vacancies in the following classes and keen to fill them.

**EYR, 5B, 5D, 6A & 6M**

If you are interested in being a Parent Rep, please contact school on [stannsce@three-saints.org.uk](mailto:stannsce@three-saints.org.uk)

## AUTUMN MENTORING CONVERSATIONS

Mentoring Conversations will take place week commencing **Monday 11 December**. Here we will discuss your child's progress and attainment. Please see separate letter for further information.



## OUTDOOR LEARNING SESSION



We have acquired 105 saplings from The Woodland Trust and every child in Year 4 and 5 will have the opportunity to get involved with the planting to create a wonderful outdoor learning space, which the whole school will benefit from as it grows for many years to come.

Children in Years 4 & 5 will need to wear their PE kit on Wednesday 6<sup>th</sup> December and a warm waterproof coat and hat. Children should bring to school wellies or outdoor boots and a trowel, in a named carrier bag. Gardening gloves are optional.

Many thanks in advance for your support with this exciting initiative.

## EARLY YEARS NATIVITY

EYP & EYR will perform their nativity on:

**Wednesday 20th December**  
**9.30am for RP parents**  
**10.30am for RR parents**

The nativity will take place in the school hall, each child will be issued with 2 tickets.

## CHRISTMAS DINNER & JUMPER DAY



On **Friday 8th December** we will be supporting the charity Save the Children by wearing our Christmas Jumpers/ outfits and accessories to school. The suggested voluntary donation is £1. Please send this into school with your child. On the same day, children who have a school meal, will be served a Christmas dinner at lunchtime.

## KS1 NATIVITY (Y1 & Y2)

This year Y1 & Y2 will perform a key stage nativity, with Y1 children being the choir. 4 performances will take place in our school hall.

**Monday 18 December @ 9.30am**  
**Monday 18 December @ 2.00pm**  
**Tuesday 19 December @ 9.30am**  
**Tuesday 19 December @ 2.00pm**

A total of 4 tickets per family can be purchased at a cost of £2 per ticket. As mentioned previously the link below should be completed to confirm your ticket preferences and payment made on Arbor by 7th December.

<https://forms.office.com/Pages/ResponsePage.aspx?id=r9bU2008dU-7UaJ-VobDnku6JMScU9ErH3VEQM3K1VURVNDTE9WM0wzTzFYU1VOMEpJRE1EWEFCSC4u>

## CHRISTINGLE WORKSHOP & SERVICE

This year the Christingle service is on Sunday 17<sup>th</sup> December at St Ann's church. This is a family service and during the service the congregation light a Christingle orange to represent the light of the world.

Before the service all children will be able to make their own Christingle Orange in school. Making Christingle Oranges will take place on Wednesday 13<sup>th</sup> and Thursday 14<sup>th</sup> December. Children in Years 2 to 6 will make their Christingle Oranges in class with their teacher.

We will be holding Christingle Workshops for children in EYFS and Year 1. During the workshop a parent/carer will be able to come along and make a Christingle orange with your child. The timetable for workshops is below.

YEAR ONE CHRISTINGLE WORKSHOP – WEDNESDAY 13 <sup>th</sup> DECEMBER (workshops to take place in the Studio. Parents to enter school via the Base Door)	
9.15am	1T
2.15pm	1M

EYFS CHRISTINGLE WORKSHOP – THURSDAY 14 <sup>th</sup> DECEMBER (workshops to take place in the Studio. Parents to enter school via the Base Door)	
9am	Up to 12 parents may attend each session. Confirmation of allocated slots have been sent out this week.
10am	
11am	
1pm	
2pm	

We look forward to seeing you at the workshops and at the service on the 17<sup>th</sup> December.



## CHOIR TO PERFORM AT CHRISTMAS CAROL CONCERT AT ST ANN'S CHURCH



Choir members will perform at the Christmas Carol concert held at St Ann's Church on Sunday 10 December.

Parents/ carers of choir children should refer to the separate letter sent out, which contains the finer details.

## SCHOLASTIC BOOK FAIR



**Exciting news!** The Scholastic Book Fair is returning to school just in time for Christmas. The book fair will be open on Monday 4<sup>th</sup> December and Tuesday 5<sup>th</sup> December.

All classes will have the opportunity to visit the book fair during the school day. We ask that children bring money to school in a named envelope in order to purchase any books, stationary and other miscellaneous items that they would like.

**The book fair will run for two days. Children will have the opportunity to visit the book fair on the following days:**

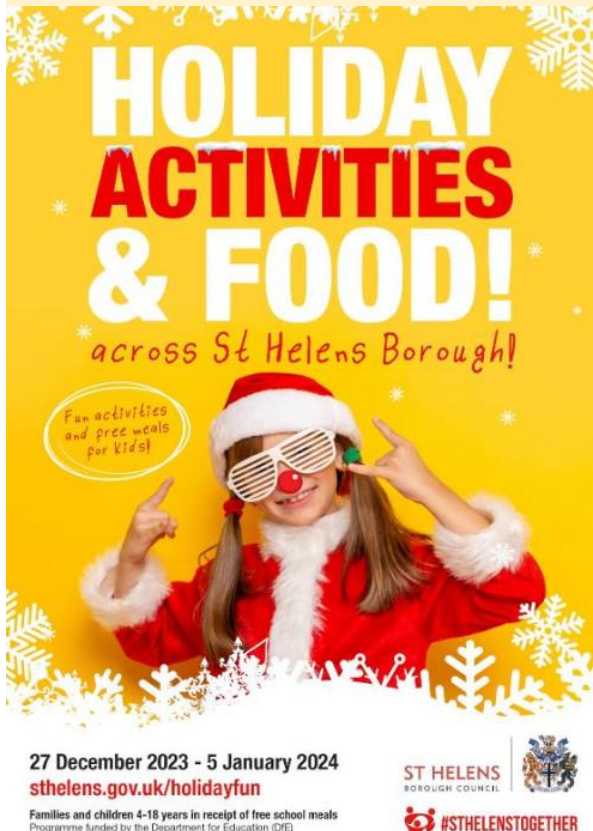
**Monday 4th December: Year 1, Year 3, Year 5 and Year 6**

**Tuesday 5th December: EYFS, Year 2 and Year 4.**

The mobile bookcases that form the Fair are packed with over 200 of the newest and best books from over 60 publishers, including exclusive titles that you won't see in shops or at any other fairs. Amazing things happen when a child can choose their own book to read, and with amazing discounts, this Book Fair helps our children access the right books for them.

You can visit the Scholastic website to see what books will be on offer by clicking on the following link:  
<https://bookfairs.scholastic.co.uk/bookcases/ro>

## WINTER HAF PROGRAMME



St Helens Borough Council has just released their wide range of activities for the Holiday, Activities and Food Programme running from 27th Dec - 5th Jan.

Any primary or secondary children or young people who are eligible for benefit related free school meals, are in receipt of a support plan from Early Help, is a Child in Need or a Child We Look After, has an EHCP or receives additional funded hours can access these activities free of charge.

They include many different activities with many including a free lunch or tea.

Parents will need to book online with the providers from 2pm on Tues 12th December and can be made via the link [booklet](#) or with the providers

## TERM TIME DATES FOR 2024-25

Term	*Open On:	*Close On:
Autumn term 2024	4 <sup>th</sup> September 2024	25 <sup>th</sup> October 2024
	4 <sup>th</sup> November 2024	20 <sup>th</sup> December 2024
Spring term 2025	6 <sup>th</sup> January 2025	14 <sup>th</sup> February 2025
	24 <sup>th</sup> February 2025	4 <sup>th</sup> April 2025
Summer term 2025	22 <sup>nd</sup> April 2025	23 <sup>rd</sup> May 2025
	4 <sup>th</sup> June 2025	22 <sup>nd</sup> July 2025

### Easter Bank Holidays:

Good Friday: 18<sup>th</sup> April 2025

Easter Monday: 21<sup>st</sup> April 2025

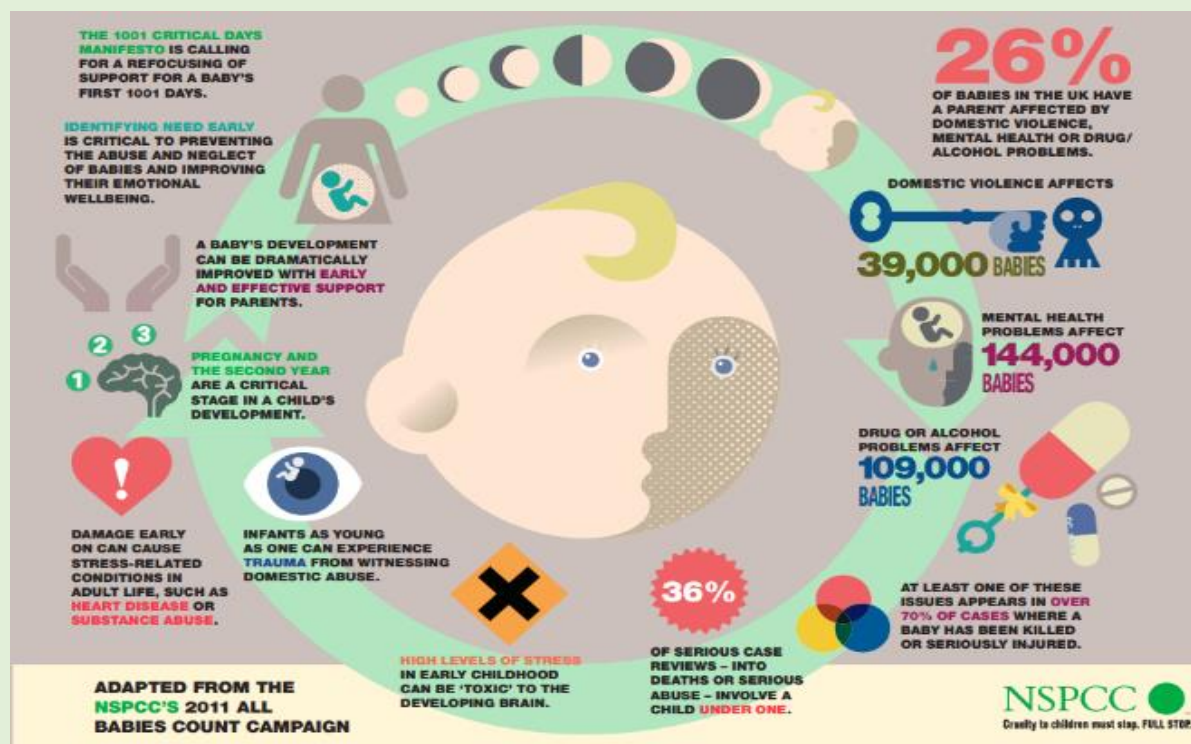
### Bank Holidays during term time:

May Day: Monday 5<sup>th</sup> May 2025

Keeping  
children safe  
is everyone's  
responsibility

## SAFEGUARDING TOP TIP #12

### The 1001 critical days







**The Children's Commissioner for England has recently launched 'The Big Ambition' to hear directly from children, young people and parents across the country.**

**We want to hear from all children, in every part of the country and in every setting.**

**This is your chance to tell key policymakers what is important to you ahead of the general election. Take part now and ensure your needs are reflected in the decisions that will affect you in years to come.**

**Scan the QR code to  
take part**



**[www.childrenscommissioner.gov.uk/thebigambition](http://www.childrenscommissioner.gov.uk/thebigambition)**



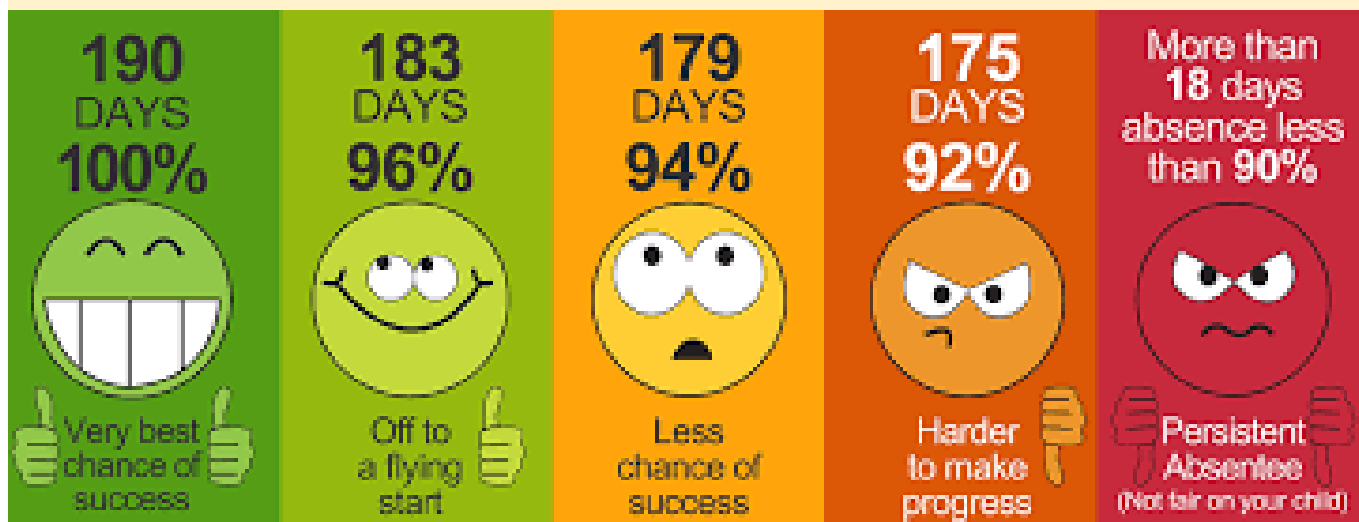


# ATTENDANCE REWARD RAFFLE

*At St Ann's we are relentless in our focus on attendance because we want the best for our pupils. The research speaks for itself, children with strong levels of attendance, fulfil their full potential and develop the skills and personal qualities required for a happy and fulfilled life.*

## Prize £50 Amazon Voucher

All children with **96%+ attendance**, and who have not taken a holiday during term time, by Friday 22 December will be entered into our first ever Attendance Raffle. **GOOD LUCK** 😊





# Christmas Raffle



**Exciting News – Raffle tickets will be on sale from Monday 4<sup>th</sup> December for our Christmas Raffle. Tickets are £1 per strip, available from the School Office.**



**.... more prizes to be announced!**



# Should I keep my child off school?

## Yes

### Until...

Chickenpox	at least 5 days from the onset of the rash and until all blisters have crusted over
Diarrhoea and Vomiting	48 hours after their last episode
Cold and Flu-like illness (including COVID-19)	they no longer have a high temperature and feel well enough to attend. Follow the national guidance if they've tested positive for COVID-19.
Impetigo	their sores have crusted and healed, or 48 hours after they started antibiotics
Measles	4 days after the rash first appeared
Mumps	5 days after the swelling started
Scabies	they've had their first treatment
Scarlet Fever	24 hours after they started taking antibiotics
Whooping Cough	48 hours after they started taking antibiotics

## No

but make sure you let their school or nursery know about...

Hand, foot and mouth	Glandular fever
Head lice	Tonsillitis
Threadworms	Slapped cheek



SCAN ME

### Advice and guidance

To find out more, search for health protection in schools or scan the QR code or visit <https://qrco.de/minfec>.



Are you pregnant or have a baby and feeling low, anxious, alone?



## Talk & support, mum to mum



'The volunteer makes me feel normal. She listens like it's okay.'

'The 1:1 support really helped my confidence - as a mum and in myself.'

'Everyone there has been through similar things - it feels like a family.'

'I was made to feel really comfortable. Nothing was a problem; it was just "talk to us about it."'

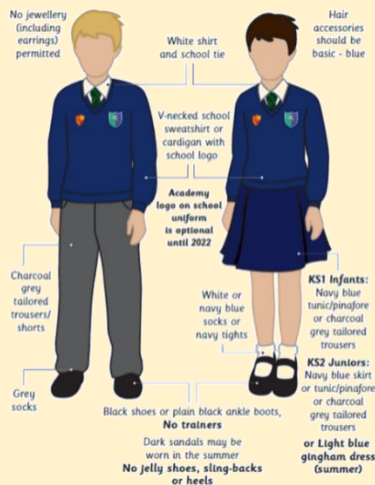
nct 1ST 1,000 DAYS  
NEW PARENT SUPPORT

For more information text/call Lauren on: 07731 994573 or email: [parentsinmind.nw@nct.org.uk](mailto:parentsinmind.nw@nct.org.uk)



## GENERAL INFORMATION/REMINDERS

### SCHOOL UNIFORM REMINDERS



\*Please note, it is no longer compulsory to wear items of clothing with the school and Trust logos on. Children may wear plain navy-blue items of school uniform.

### SCHOOL SHOES REMINDER

#### School Uniform - Shoes



NOT PERMITTED



PERMITTED





## TOAST YEARS 1-6

If you would like your child to have Toast at breaktime for Spring 1 (9<sup>th</sup> January 2024 – 9<sup>th</sup> February 2024) please ensure that your Arbor Toast account has a balance of at least £6.00 by 19<sup>th</sup> December. If your account is not in credit by at least this amount by this date we will issue a reminder by In-App message. If payment is still not received by the date stated in the reminder we will be unable to provide your child with toast for the ensuing half term. The current balance on your Toast account can be viewed by accessing your Arbor account.

## EARLY YEARS SNACK

Foundation stage children receive Snack on a daily basis. We would be most grateful if you would make payment on Arbor of the following amounts by the due dates:

Autumn 2 - £10.50 as soon as possible if not already done so

Spring 1 - £7.20 by 19th December 2023

Spring 2 - £8.70 by 31st January 2024

Summer 1 - £8.40 by 20th March 2024

Summer 2 - £11.10 by 15th May 2024

## TERM DATES

Term	Open on	Close on
Autumn Term 2023	5th September 2023	26th October 2023
	6th November 2023	22nd December 2023
Spring Term 2024	9th January 2024	9th February 2024
	19th February 2024	28th March 2024
Summer Term 2024	15th April 2024	22nd May 2024
	3rd June 2024	23rd July 2024

## PURCHASING SCHOOL ITEMS

If you wish to purchase a school item this can now be done through Arbor. If you make a purchase please email the school office at [stannsce@three-saints.org.uk](mailto:stannsce@three-saints.org.uk) so that arrangements can be made to issue the item. Current prices are as follows:

**School Bag £10.00**

**Junior Tie £4.00**

**Elasticated Tie £3.50**

**Children's University Passport £5.00**

**Replacement Home School Diary £5.00**

**Courtesy**

**Care**

**Concentration**



**St. Ann's Church of England Primary School**

View Road, Rainhill, Merseyside, L35 0LQ

Tele: 0151 426 5869

Website: <http://www.rainhillstanns.co.uk>

Email: [stannsce@three-saints.org.uk](mailto:stannsce@three-saints.org.uk)

Twitter: [@RainhillStAnns](https://twitter.com/RainhillStAnns)

Headteacher: Mrs Laura Rynn

‘But those who trust in the Lord, they will find new strength.

They will soar high on wings like eagles’ **Isaiah 40:31**

## Parents' Suggestion/Comment Slip

# TOAST

YEARS 1-6

If you would like your child to have Toast every half term please see below for the amount due each half term and the date the amount is required by. Payments should be made to your Arbor Toast account. Payments can be made in advance of these dates if you wish and the credit will be used once the due date arrives.

	Amount Due	Date Toast Account to be in credit by
Autumn 1	£9.50	13th July 2023
Autumn 2	£8.75	18th October 2023
Spring 1	£6.00	19th December 2023
Spring 2	£7.25	31st January 2024
Summer 1	£7.00	20th March 2024
Summer 2	£9.25	15th May 2024

Total for year £47.75

DATES FOR DIARY AUTUMN 2023

DAY	DATE	EVENT
Thursday	14 <sup>th</sup> December 2023	Y1 Pantomime @ The Theatre Royal
Monday & Tuesday	18 <sup>th</sup> / 19 <sup>th</sup> December 2023	KS1 Nativity Performances
Wednesday	20 <sup>th</sup> December 2023	Y2 Christmas Party EY's Nativity - 9.30am for RP parents 10.30am for RR parents
Thursday	21 <sup>st</sup> December 2023	EY's & Y1 Christmas Party Y3 & Y4 Christmas Party
Friday	22 <sup>nd</sup> December 2023	Children's University Passport Bank Y5 & Y6 Christmas Party Y3 Lead Christmas Service @ Church 9.30am
Friday	22 <sup>nd</sup> December 2023	School Closes
Tuesday	9 <sup>th</sup> January 2024	School Open