



# St Ann's Church of England Primary School



*Together, we aim high; with God's love, we can fly!*

Value of the Half Term

*Trust*

Newsletter Issue 11

Friday 24 November 2023

Commit your way to the LORD; trust in him, and he will act.

Psalm 37-5

## CONTENTS

1. Keeping On Track Visit
2. A Spotlight on Attendance & Punctuality
3. Assessment Week
4. Family Worship
5. Parent Forum
6. Autumn Mentoring Conversations
7. Outdoor Learning Session
8. Christmas Dinner and Jumper Day
9. Early Years Nativity
10. KS1 Nativity
11. Christingle Workshop & Service
12. Rainhill Christmas Lights Switch On
13. Term Dates 2024-25
14. Safeguarding Top Tip No. 11#
15. Job Vacancies at St Ann's
16. General Information/Reminders



## KEEPING ON TRACK VISIT



THE CHURCH  
OF ENGLAND  
EDUCATION OFFICE

Last week we had a visit from a church schools inspector for a 'Keeping On Track' assessment. The inspector reviewed our Religious Education provision as well as our Christian distinctiveness and ethos. He undertook a variety of activities including looking at

RE lessons, viewing the school learning environment and speaking with children, staff and members of our school committee. The inspector was extremely complementary about our school, and we look forward to receiving the full report in due course.

A special mention of thanks to Mrs Preston for overseeing this special aspect of our provision at St Ann's and ensuring it is exceptional in quality.

Church of England Education

Deeply Christian,  
serving the common  
good

KIDS GET THEIR SUPER POWERS BY  
**ATTENDING SCHOOL  
EVERY DAY** ⚡

BE AN ATTENDANCE  
**SUPERHERO!**

Whole school attendance year to date <i>Whole School target 96%</i>	96.63%
Whole school attendance week ending 17 <sup>th</sup> November 2023	97.08%
Class with best weekly attendance	1M & 1T – 100%

### Attendance Expectations

Children are expected to be in school **every day** unless they are unwell. All other reasons will be unauthorised. If your child is going to be absent, contact school and let us know before 9.20am. Children not in school may receive a phone call home or home visit. In line with our Attendance Policy, we are committed to supporting families in improving their child's attendance, before taking legal action.

**Number of pupils  
with 100% attendance  
this week**

**363**

### Punctuality

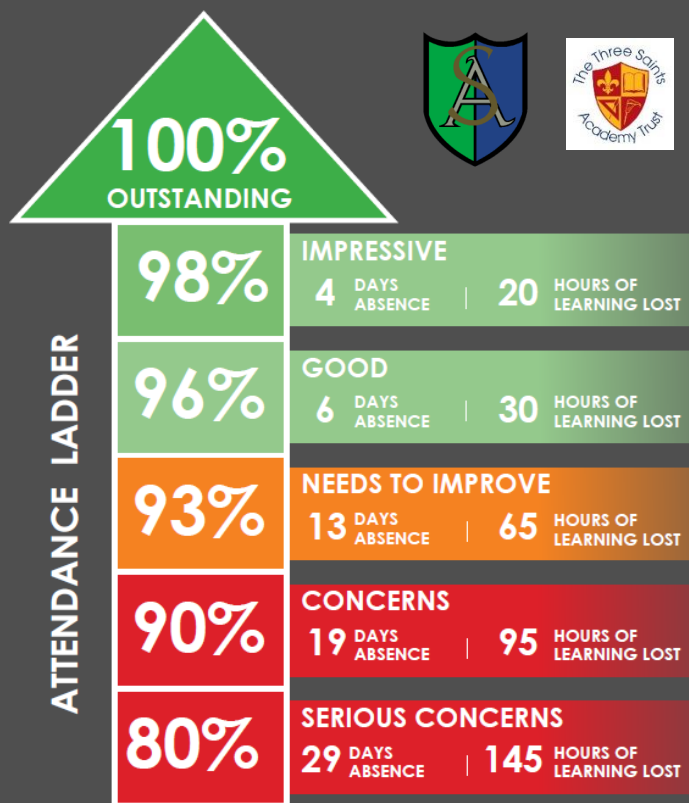
School starts at **8.50am**.  
Lessons start at **8.50am**.

School gates open at 8.40am.

Children arriving after 8.50am will need to use the main entrance. Children who enter school via the main entrance will be registered as late. Regularly missing the beginning of lessons has a negative impact on a child's progress and wellbeing.

## EVERY DAY COUNTS!

School and **future success** starts with good attendance!



Remember - your education is important - **don't miss out!**



## A SPOTLIGHT ON ATTENDANCE & PUNCTUALITY

**Miss  
School  
Miss  
Out**



**Good attendance  
in school means:**

Being in school  
at least **97%** of the  
time, that's **185 to 190**  
days every year

**Did you know?**

A two week holiday  
in term time means the  
highest attendance  
possible is **94.7%**



GCSEs may seem a long way off  
for you but all absence at any  
stage leads to gaps in your  
learning

## EVERY DAY COUNTS

School and future **success** starts  
with good **attendance!**



### DAILY LATENESS EQUATES TO...



5 MINUTES LATE  
15 hours lost to learning

10 MINUTES LATE  
30 hours lost to learning

15 MINUTES LATE  
50 hours lost to learning

**Remember**

**Your education is important - don't miss out!**



**100%**

Your attendance  
is excellent!

Our target for  
all students

**97%**

Well done!

**6 DAYS ABSENCE**  
30 hours lost to learning  
You're on the right path for  
success, keep it up!

**95%**

We're concerned

**10 DAYS ABSENCE**  
50 hours lost to learning  
A poor attendance gives you  
less chance of success.

**90%**

Seriously worried

**19 DAYS ABSENCE**  
95 hours lost to learning  
Very poor attendance has a  
serious impact on your  
education and may reduce  
your life choices.

## ASSESSMENT WEEK



Assessment Week will commence Wednesday 29th November and run into the following week.

In order for your child to showcase the progress they have made this term, please ensure they get an early night, are off electronic devices at least an hour before bedtime, and eat a nutritious breakfast.

## FAMILY WORSHIP

Well done to 5D for their Family Worship all about Anti-Bullying.

On **Friday 1 December at 9am**, 4S will lead their Family Worship in the hall all about Universal Children's Day. Please wait at the back of school by the hall door ready to be let in.



## School Admissions Calendar: 2024-2025 School Year Intakes

	Closing Dates for Applications	Letter/Email to Parents
Secondary (portal opened 4th September 2023 closes 31st October 2023)	31 October 2023	1 March 2024
Primary (portal opens 18th September 2023 closes 15th January 2024)	15 January 2024	16 April 2024
Nursery Autumn 2024 Intake (portal was open 12 June 2023 -21 July 2023)	21 July 2023	22 September 2023
Nursery Spring 2025 Intake	19 July 2024	20 September 2024
Nursery Summer 2025 Intake	19 July 2024	20 September 2024

For further information please contact the School Admissions Section on 01744 671035 (Nursery and Primary Allocations), 01744 671030 (Secondary Allocation) and 01744 671027 (In Year Transfers).



## PARENT FORUM

We have Parent Forum Rep vacancies in the following classes and keen to fill them.

**EYR, 5B, 5D, 6A & 6M**

If you are interested in being a Parent Rep, please contact school on [stannsce@three-saints.org.uk](mailto:stannsce@three-saints.org.uk)

## AUTUMN MENTORING CONVERSATIONS

Mentoring Conversations will take place week commencing **Monday 11 December**. Here we will discuss your child's progress and attainment. Please see separate letter for further information.



## OUTDOOR LEARNING SESSION



We have acquired 105 saplings from The Woodland Trust and every child in Year 4 and 5 will have the opportunity to get involved with the planting to create a wonderful outdoor learning space, which the whole school will benefit from as it grows for many years to come.

Children in Years 4 & 5 will need to wear their PE kit on Wednesday 6<sup>th</sup> December and a warm waterproof coat and hat. Children should bring to school wellies or outdoor boots and a trowel, in a named carrier bag. Gardening gloves are optional.

Many thanks in advance for your support with this exciting initiative.

## CHRISTMAS DINNER & JUMPER DAY

On **Friday 8 December** we will be supporting the charity Save the Children by wearing our Christmas Jumpers/ outfits and accessories to school. The suggested voluntary donation is £1. Please send this into school with your child. On the same day, children who have a school meal, will be served a Christmas dinner at lunchtime.



## EARLY YEARS NATIVITY

EYP & EYR will perform their nativity on:

**Wednesday 20th December**  
**9.30am for RP parents**  
**10.30am for RR parents**

The nativity will take place in the school hall, each child will be issued with 2 tickets.

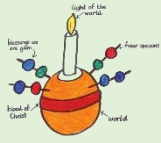
## KS1 NATIVITY (Y1 & Y2)

This year Y1 & Y2 will perform a key stage nativity, with Y1 children being the choir. 4 performances will take place in our school hall.

**Monday 18 December @ 9.30am**  
**Monday 18 December @ 2.00pm**  
**Tuesday 19 December @ 9.30am**  
**Tuesday 19 December @ 2.00pm**

A total of 4 tickets per family can be purchased at a cost of £2 per ticket. As mentioned in last week's Newsletter please find below a link to complete to confirm your ticket preferences. Once the link has been completed please access "Keystage 1 Nativity" on Arbor to make payment for your tickets. The deadline for payments is 7th December.

<https://forms.office.com/Pages/ResponsePage.aspx?id=r9bU20O8dU-7UaJ-VobDnku6JMScU9ErH3VEQM3K1VURVNDTE9WM0wzTzFYU1VOMEpJRE1EWEFCSC4u>



## CHRISTINGLE WORKSHOP & SERVICE

This year the Christingle service is on Sunday 17<sup>th</sup> December at St Ann's church. This is a family service and during the service the congregation light a Christingle orange to represent the light of the world.

Before the service all children will be able to make their own Christingle Orange in school. Making Christingle Oranges will take place on Wednesday 13<sup>th</sup> and Thursday 14<sup>th</sup> December. Children in Years 2 to 6 will make their Christingle Oranges in class with their teacher.

We will be holding Christingle Workshops for children in EYFS and Year 1. During the workshop a parent/carer will be able to come along and make a Christingle orange with your child. The timetable for workshops is below.

<b>YEAR ONE CHRISTINGLE WORKSHOP – WEDNESDAY 13<sup>th</sup> DECEMBER</b> <b>(workshops to take place in the Studio. Parents to enter school via the Base Door)</b>	
9.15am	1T
2.15pm	1M

<b>EYFS CHRISTINGLE WORKSHOP – THURSDAY 14<sup>th</sup> DECEMBER</b> <b>(workshops to take place in the Studio. Parents to enter school via the Base Door)</b>	
9am	Up to 12 parents may attend each session. Confirmation of allocated slots will be sent out shortly.
10am	
11am	
1pm	
2pm	

We look forward to seeing you at the workshops and at the service on the 17<sup>th</sup> December.



## RAINHILL CHRISTMAS LIGHTS SWITCH ON

On Sunday 26<sup>th</sup> November 2023 our talented choir will be performing at the Rainhill Christmas Light Switch On. How exciting! We hope that members of our school community will come along to support our choir as they will be performing at 4:00pm in 'The Side Garden at the Cookhouse'. Straight after the performance, at 4:30pm the countdown will begin and the streets of Rainhill Village will shine brightly.

Why not make a day of it? The event will take place from 2pm until 6pm and there will be an array of Christmas market stalls set up inside the post office and outside of the Cookhouse in the car park. The

Cookhouse outside bar will be open serving food and drink. Who knows? You may even bump into Santa with his sleigh outside the Co-op between 3-5pm.

Further details regarding arrangements will be sent out to members of the Choir shortly.

We hope to see lots of you there as this event will definitely get you in the Christmas spirit!

## TERM TIME DATES FOR 2024-25

Term	*Open On:	*Close On:
Autumn term 2024	4 <sup>th</sup> September 2024	25 <sup>th</sup> October 2024
	4 <sup>th</sup> November 2024	20 <sup>th</sup> December 2024
Spring term 2025	6 <sup>th</sup> January 2025	14 <sup>th</sup> February 2025
	24 <sup>th</sup> February 2025	4 <sup>th</sup> April 2025
Summer term 2025	22 <sup>nd</sup> April 2025	23 <sup>rd</sup> May 2025
	4 <sup>th</sup> June 2025	22 <sup>nd</sup> July 2025

### Easter Bank Holidays:

Good Friday: 18<sup>th</sup> April 2025

Easter Monday: 21<sup>st</sup> April 2025

### Bank Holidays during term time:

May Day: Monday 5<sup>th</sup> May 2025

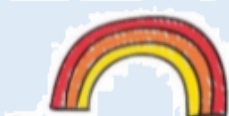


## SAFEGUARDING TOP TIP #11

### Mental Health

How to promote good mental health with your child

- Connect with your child every day and share your own feelings.
- Ensure your child has an opportunity to have quiet time together.
- Praise your child when they do well, recognise efforts as well as achievements.
- Actively listen to your child with no distractions.
- Keep your promises, if you're not able to make sure you explain your reasons.
- Encourage your child to focus on the moment and not dwell on events.
- Practise self-care for yourself and set the standard.
- Help your child to develop a language of feelings, use stories or play together to help them to understand.



## JOB VACANCIES AT ST ANN'S

**Level 2 Teaching Assistant  
Level 3 Teaching Assistant  
Attendance Officer & Therapeutic Teaching Assistant  
Base Manager**

*The Three Saints Academy Trust is committed to safeguarding and promoting the welfare of its pupils and expects all those working within the trust to share this commitment. All offers of employment are subject to an Enhanced DBS check, and where applicable, a prohibition from teaching check will be completed for all applicants.*

*Visits to the school are encouraged and warmly welcomed. Please telephone to arrange an appointment (0151 426 5869).*

### Application Process:

The application pack is available on <http://www.three-saints.org.uk/index.php/vacancies/>. CVs will not be accepted.

**Closing Date & Short-listing & Interviews:** See individual adverts

We are seeking to appoint some highly motivated, enthusiastic and talented people to join our outstanding primary school, and who shares our vision for providing a first-class education and instilling all our children with a love of learning.

### We are looking for people who:

- Like working with children
- Are passionate and enthusiastic for learning
- Can establish good working relationships with children, staff and parents
- Can take direction and work on own initiative
- Can work as part of a team
- Promote positive behaviour
- Are hard working and conscientious
- Are excellent communicators
- Are organised and efficient
- Are friendly and flexible
- Are professional and positive
- Understand confidentiality



St Ann's is an over-subscribed, two form entry Church of England primary school, with a strong track record of achievement and an outstanding judgement from Ofsted and excellent from SIAMs. We nurture and care for our children in a Christian ethos, placing our children and their family at the centre of our work. Our children are encouraged to be independent, creative and reflective learners who can self-manage, work within a team and effectively participate and communicate.

### What we can offer you:

We can offer you:

- fantastic children with a positive attitude towards learning and excellent behaviour;
- the support of a dedicated, committed and creative staff team;
- the opportunity to be part of an outstanding school;
- a school already established in developing practitioners and nurturing its staff because of its unrivalled opportunities for professional development through the Northwest Learning Partnership and NW3 Maths Hub which are within our MAT;
- an engaging, bespoke curriculum;
- supportive School Committee, Directors and parents



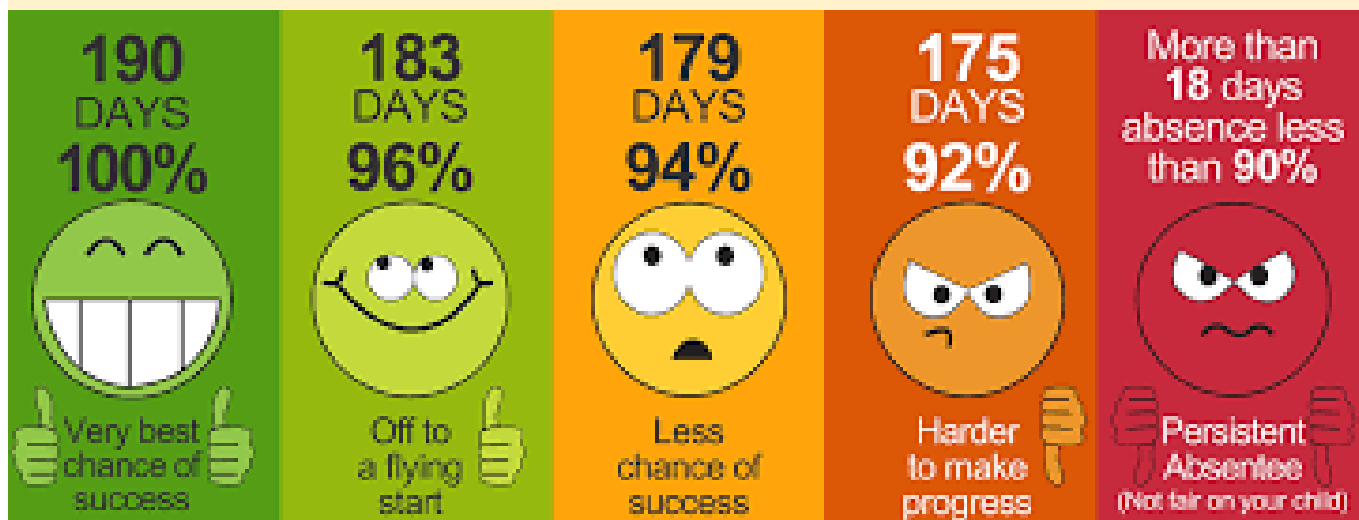


# ATTENDANCE REWARD RAFFLE

*At St Ann's we are relentless in our focus on attendance because we want the best for our pupils. The research speaks for itself, children with strong levels of attendance, fulfil their full potential and develop the skills and personal qualities required for a happy and fulfilled life.*

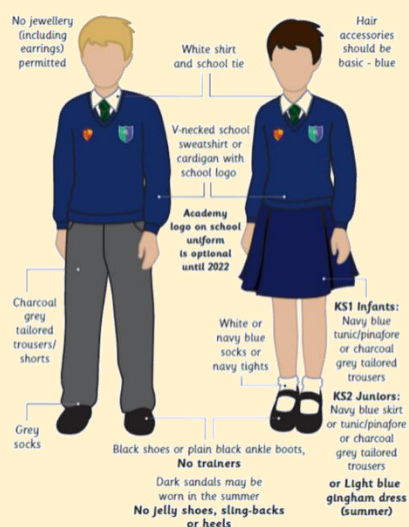
## Prize £50 Amazon Voucher

All children with **96%+ attendance**, and who have not taken a holiday during term time, by Friday 22 December will be entered into our first ever Attendance Raffle. **GOOD LUCK** 😊



## GENERAL INFORMATION/ REMINDERS

### SCHOOL UNIFORM REMINDERS



*\*Please note, it is no longer compulsory to wear items of clothing with the school and Trust logos on. Children may wear plain navy-blue items of school uniform.*

### SCHOOL SHOES REMINDER



### TOAST YEARS 1-6

The deadline for Toast (Years 1-6) for this half term has now passed. Please see the flyer attached to this Newsletter for details of the payments required for future half terms.

### EARLY YEARS SNACK

Foundation stage children receive Snack on a daily basis. We would be most grateful if you would make payment on Arbor of the following amounts by the due dates:

Autumn 2 - £10.50 as soon as possible if not already done so

Spring 1 - £7.20 by 19th December 2023

Spring 2 - £8.70 by 31st January 2024

Summer 1 - £8.40 by 20th March 2024

Summer 2 - £11.10 by 15th May 2024

### TERM DATES

Term	Open on	Close on
Autumn Term 2023	5th September 2023	26th October 2023
	6th November 2023	22nd December 2023
Spring Term 2024	9th January 2024	9th February 2024
	19th February 2024	28th March 2024
Summer Term 2024	15th April 2024	22nd May 2024
	3rd June 2024	23rd July 2024

### PURCHASING SCHOOL ITEMS

If you wish to purchase a school item this can now be done through Arbor. If you make a purchase please email the school office at [stannsce@three-saints.org.uk](mailto:stannsce@three-saints.org.uk) so that arrangements can be made to issue the item. Current prices are as follows:

**School Bag £10.00**

**Junior Tie £4.00**

**Elasticated Tie £3.50**

**Children's University Passport £5.00**

**Replacement Home School Diary £5.00**

## LOST PROPERTY

Unnamed lost property will be available for inspection and collection outside the School Office every Friday between 2pm and 3.30pm.

## PARKING

Concern has been expressed by parents that children's safety is being placed at risk by inconsiderate and illegal parking. May we once again ask that consideration is given when parking near to school premises.

UK Health Security Agency

NHS

### Should I keep my child off school?

**Yes**

	Until...
Chickenpox	at least 5 days from the onset of the rash and until all blisters have crusted over
Diarrhoea and Vomiting	48 hours after their last episode
Cold and Flu-like illness (including COVID-19)	they no longer have a high temperature and feel well enough to attend. Follow the national guidance if they've tested positive for COVID-19.
Impetigo	their sores have crusted and healed, or 48 hours after they started antibiotics
Measles	4 days after the rash first appeared
Mumps	5 days after the swelling started
Scabies	they've had their first treatment
Scarlet Fever	24 hours after they started taking antibiotics
Whooping Cough	48 hours after they started taking antibiotics

**No**

but make sure you let their school or nursery know about...

Hand, foot and mouth	Glandular fever
Head lice	Tonsillitis
Threadworms	Slapped cheek

Advice and guidance  
To find out more, search for health protection in schools or scan the QR code or visit <https://qrco.de/minifec>

© Crown Copyright 2022. Produced under the Creative Commons Attribution 4.0 International license. See <https://www.nhs.uk/permissions> for more information.



**Courtesy**  
**Care**  
**Concentration**

### St. Ann's Church of England Primary School



View Road, Rainhill, Merseyside, L35 0LQ

Tele: 0151 426 5869

Website: <http://www.rainhillstanns.co.uk>

Email: [stannsce@three-saints.org.uk](mailto:stannsce@three-saints.org.uk)

Twitter: [@RainhillStAnns](https://twitter.com/RainhillStAnns)

Headteacher: Mrs Laura Rynn

‘But those who trust in the Lord, they will find new strength.  
They will soar high on wings like eagles’ **Isaiah 40:31**

## Parents' Suggestion/Comment Slip

# TOAST

YEARS 1-6

If you would like your child to have Toast every half term please see below for the amount due each half term and the date the amount is required by. Payments should be made to your Arbor Toast account. Payments can be made in advance of these dates if you wish and the credit will be used once the due date arrives.

	Amount Due	Date Toast Account to be in credit by
Autumn 1	£9.50	13th July 2023
Autumn 2	£8.75	18th October 2023
Spring 1	£6.00	19th December 2023
Spring 2	£7.25	31st January 2024
Summer 1	£7.00	20th March 2024
Summer 2	£9.25	15th May 2024

Total for year £47.75



DATES FOR DIARY AUTUMN 2023

DAY	DATE	EVENT
Friday	1 <sup>st</sup> December 2023	4H Family Worship 9.00-9.30am
Friday	8 <sup>th</sup> December 2023	Christmas Dinner Day
Thursday	14 <sup>th</sup> December 2023	Y1 Pantomime @ The Theatre Royal
Monday & Tuesday	18 <sup>th</sup> / 19 <sup>th</sup> December 2023	KS1 Nativity Performances 9.30am & 2pm (4 performances in total)
Wednesday	20 <sup>th</sup> December 2023	Y2 Christmas Party EY's Nativity - 9.30am for RP parents 10.30am for RR parents
Thursday	21 <sup>st</sup> December 2023	EY's & Y1 Christmas Party Y3 & Y4 Christmas Party
Friday	22 <sup>nd</sup> December 2023	Children's University Passport Bank Y5 & Y6 Christmas Party Y3 Lead Christmas Service @ Church 9.30am
Friday	22 <sup>nd</sup> December 2023	School Closes
Tuesday	9 <sup>th</sup> January 2024	School Open

# STOP HERE FOR FESTIVE CHEER



Dear Parent / Guardian,

The veg gang are BACK for more festive fun!

Christmas is a special time of year for the school community. We love getting together to celebrate the season with our students, staff, and families. We believe that this is a great opportunity for your child to experience a traditional Christmas meal in the company of their friends and classmates.

Join our festive friends this winter as we learn about different cultures and traditions, whilst feasting on some festive favourites.

We hope you will join us at **St Anns** as we get in the festive spirit.



Merry Christmas,  
From **Jeanette**, and The  
Mellors  
Catering Team

P.S. Don't forget your  
Activity Sheet!

## Our festive dates

8 th December 2023

## Our festive menu

### Main Menu

Roast Turkey, roast potatoes, carrots,  
sage & onion stuffing, chipolata, peas  
and cranberry sauce

Or  
Selection of Sandwiches

### Dessert

Christmas shortbread biscuit  
Chocolate brownie  
Mince pie



**St Ann's Church**  
RAINHILL

**RAINHILL  
FARMERS'  
MARKET**



# Merry Christmas



**St Ann's Church  
Christmas Fair  
&**



**Rainhill Farmers' Market**

**Saturday 2<sup>nd</sup> December**  
**9am – 1pm**

**All your favourite Farmers'  
Market stalls along with many  
more inside church.**



**I'll be  
there  
too!**

