



# 'St Ann's Church of England Primary School



*Together, we aim high; with God's love, we can fly!*

**Value of the Half Term**

*Creation*

**Newsletter Issue 7**

**Thursday 20 October 2022**

Have you not known? Have you not heard? The LORD is the everlasting God, the Creator of the ends of the earth. He does not faint or grow weary; his understanding is unsearchable.

Isaiah 40:28

## CONTENTS

1. Hot Chocolate with the Head
2. Shining a Spotlight on Mathematics
3. World Food Day
4. Harvest Donations
5. Numbots and TimesTable Rockstars
6. Parent Insight Sessions
7. Lost Property
8. Polite Notice
9. Parking
10. Family Worship
11. St Helens 5<sup>th</sup> Lake Beavers
12. Message from St Helens Council
13. Super Leaders
14. Weekly Reminders
15. General Information



## HOT CHOCOLATE WITH THE HEAD



This week a number of pupils were rewarded with a treat of Hot Chocolate with Mrs Rynn. Well done to the following children who have made an excellent start to the new school year and every day show the **'St Ann's Standard'**. I wonder who will be chosen by their teacher next half term?

<b>EYP</b>	Penelope B	<b>3E</b>	Sansa C
<b>EYR</b>	Seren M	<b>3H</b>	Zara M
<b>1A</b>	Onia F-R	<b>4F</b>	Harriet L
<b>1T</b>	Olivia V	<b>4H</b>	Sofia P
<b>2H</b>	James M	<b>5D</b>	Grace B
<b>2S</b>	Holly P	<b>5O</b>	Caitlin O
		<b>6A</b>	Gabriel T
		<b>6M</b>	Isabella L

KIDS GET THEIR SUPER POWERS BY  
**ATTENDING SCHOOL  
EVERY DAY** ⚡

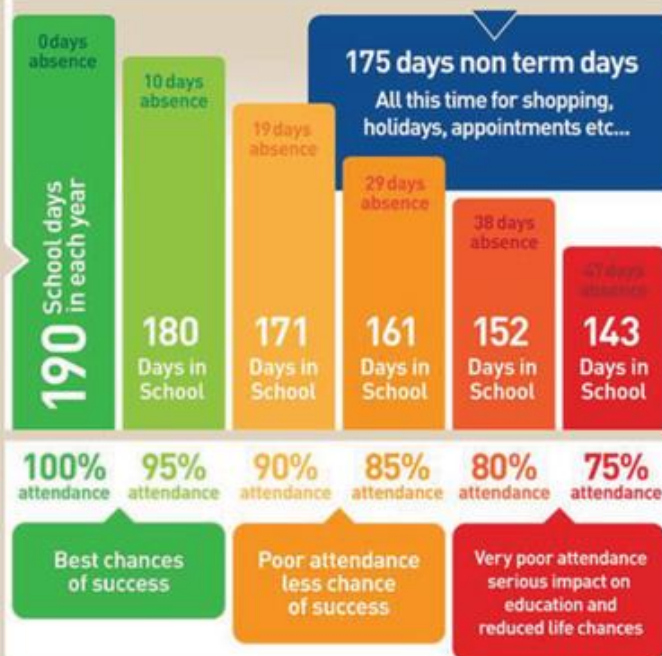
BE AN ATTENDANCE  
SUPERHERO!

Whole school attendance year to date. <i>Whole School target 96%</i>	97.4%
Whole school attendance week ending 14 <sup>th</sup> October 2022	97.4%
Class with best weekly attendance	RP, 2S, 3H & 4F – 99.3%

**EVERY  
DAY  
MATTERS**

SCHOOL + YOU = SUCCESS

365 days in a calendar year



### Attendance Expectations

Children are expected to be in school **every day** unless they are unwell. All other reasons will be unauthorised. If your child is going to be absent, contact school and let us know before 9.20am. Children not in school may receive a phone call home or home visit. In line with our Attendance Policy, we are committed to supporting families in improving their child's attendance, before taking legal action.

Number of pupils  
with 100% attendance  
this week

366

### Punctuality

School starts at **8.50am**.  
Lessons start at **8.50am**.

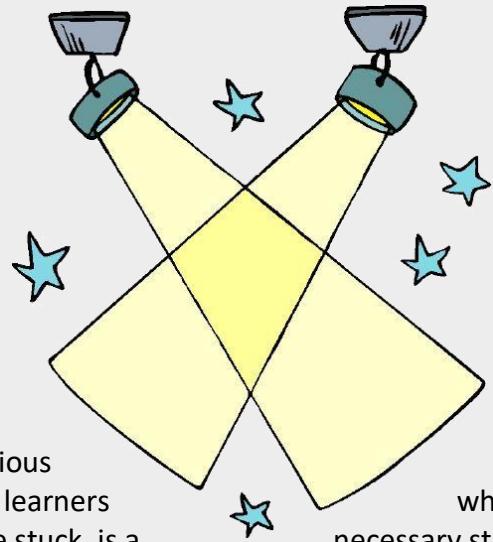
School gates open at 8.40am.

Children arriving after 8.50am will need to use the main entrance. Children who enter school via the main entrance will be registered as late. Regularly missing the beginning of lessons has a negative impact on a child's progress and wellbeing.

## SHINING A SPOTLIGHT ON: MATHEMATICS

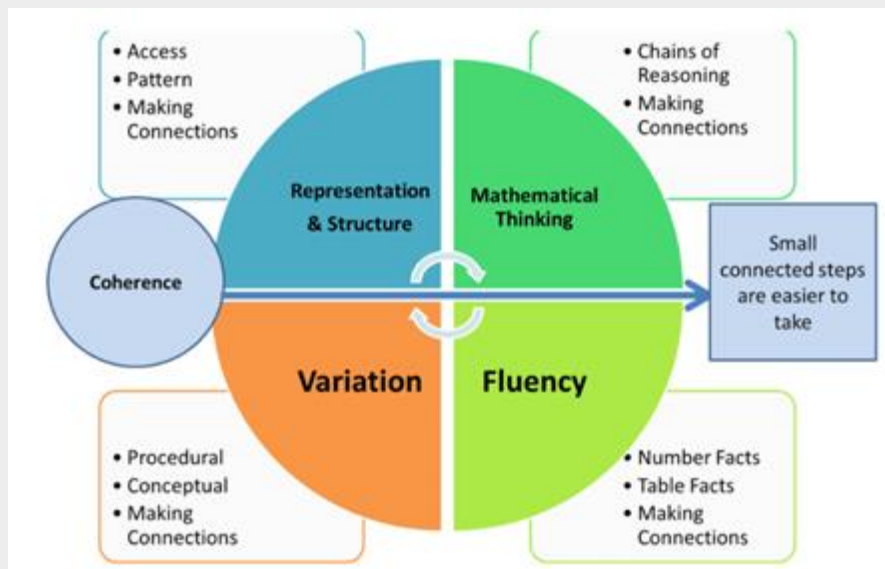
Our Maths provision at St Ann's aims to build a curriculum which develops learning and results in all pupils knowing more, remembering more and understanding more.

When teaching Maths, we use a variety of teaching methods and resources that allow all pupils to experience Maths success, regardless of prior starting points and previous knowledge. Over time, children will become more resilient learners who are able to understand that to make mistakes, or become stuck, is a necessary step in any learning. All children will be appropriately challenged and supported in their Maths lessons through varied fluency, reasoning and problem solving – The 3 Aims of the Maths National Curriculum.



Irrespective of personal starting points, children will explore Maths in depth, and use a range of Mathematical vocabulary to reason and explain their own thinking. We strongly encourage the use of correct, subject specific terminology and children using this key vocabulary in full sentences to articulate what they are doing, and most importantly, **why** they are doing it. We do not want children to simply be able to recall procedures by rote, as this suggests limited understanding of why they are doing what they are doing.

Visual representations, concrete manipulatives and pictorial images are used in all Maths lessons to support children's developing Mathematical understanding in a variety of ways. These include, but are not limited to, numicon, base 10, place value counters, bead strings, number lines, digit cards and hundred squares. This is inline with the CPA approach to learning – Concrete Manipulatives, Pictorial Images and Abstract Concepts. Embedded throughout Maths lessons are the 5 Principles of Teaching for Mastery.





## WORLD FOOD DAY

You can support World Food Day both this week and beyond by donating food items locally and help those most in need in the borough. You can also text to donate and help make a real difference! More here : [Residents are encouraged to help others by supporting World Food Day - St Helens Borough Council](#)

The campaign will run from 13<sup>th</sup>-26<sup>th</sup> October 2022 and residents can take part by texting FEEDSTHELENS to 70085 to donate £2 Texts cost £2 (plus the standard text message rate).

If you want to donate more you can Text FEEDSTHELENS plus the amount to 70085 (you will be charged the standard message rate). For example, to donate £20, text FEEDSTHELENS £20.

## HARVEST DONATIONS

Many thanks for all the donations that have been made towards our chosen Charity this Harvest – St Helens Foodbank.



## NUMBOTS & TIMESTABLE ROCKSTARS

Daily use of Numbots and TTRockstars has been proved to boost number of times table recall speed significantly, impacting positively on children's Mathematical Development.

Just as the expectation at St Ann's is to read for 5 out of every 7 each week, the expectation to access either Numbots (EY - Y2) and TTRockstars (Y2 - Y6) is the same.

The table below shows the number of children who have accessed the programmes in the last 7 days. You can show that your child has accessed either of the programmes by simply ticking the logo off in your child's home school diary. Let's do this!

RP	RR	1A	1T	2H	2S	3E	3H	4F	4H	5D	5O	6A	6M
7	5	5	6	2	2	11	5	10	26	3	3	3	4

### Most Improved



FS: Sophia H & Sienna W

Year 1: Lewis K & Logan R

Year 2: Mila W & Evalynn D

Year 3: Jessica M & Joseph A

Year 4: Nicole C & Sofia P

Year 5: Jonas I & Teddy H

Year 6: Connor L & Jonas R

School closes today for  
half term.

School re-opens after  
the half term on Monday  
31st October 2022

### PARENT INSIGHT SESSIONS



Next half term we will be opening our doors fully to parents/ carers once again, with an invitation to our new Parent Insight Sessions.

1 parent/ carer is invited to join their child for one demonstration lesson which is designed to give you an insight into teaching and learning in that subject area. Dates and times can be seen below.

Lessons will take place in the Studio to ensure there is enough space. To enter, parents/ carers should wait at the front of school by the blue Base door 5 minutes before the start of the session.

Siblings who do not attend the school are not permitted to attend for health and safety reasons.

Mobile phone should be switched off before you enter the premises.

The session will begin with a brief talk from your child's class teacher about the session you will take part in.

Children whose parents/ carers do not attend, will still take part in the lesson.

Class	Date	Time
EYP	Monday 14 <sup>th</sup> November	10.00am
EYR	Monday 14 <sup>th</sup> November	11.00am
1A	Monday 7 <sup>th</sup> November	9.45am
1T	Monday 7 <sup>th</sup> November	10.45am
2H	Monday 7 <sup>th</sup> November	1.15pm
2S	Monday 7 <sup>th</sup> November	2.30pm
3E	Tuesday 8 <sup>th</sup> November	1.15pm
3H	Tuesday 8 <sup>th</sup> November	2.30pm
4F	Tuesday 8 <sup>th</sup> November	9.45am
4H	Tuesday 8 <sup>th</sup> November	10.45am
5O	Friday 11 <sup>th</sup> November	9.45am (after Family Worship)
5D	Friday 11 <sup>th</sup> November	10.45am
6A	Friday 11 <sup>th</sup> November	1.30pm
6M	Friday 11 <sup>th</sup> November	2.30pm

## LOST PROPERTY

If your child loses an item of clothing in school, then it will be placed in our lost property boxes on school site. Should you wish to see if a missing item is in the box, please call into the school office and they can share the boxes with you.

Clearly named items of clothing will likely not make it to the lost property box, as they will be simply sent back to the classroom of their owner to be reunited. It is very important that ALL items of your child are clearly labelled with their name and class. We appreciate the effort that parents and carers go to, to ensure that their child wears the appropriate uniform and, as a result, make a conscious effort to reunite missing items to the correct owner. This job is more difficult when items are not clearly labelled with names and classes. Thank you for your support with this.

## POLITE NOTICE

When speaking with members of staff, please remember to do so respectfully.

Verbal abuse will not be tolerated, and could result in action being taken.

## PARKING

We have had a number of complaints recently from both parents and people living close to school regarding parking. Please could parents therefore ensure that they are parking both legally and considerately when dropping off or picking up their children. Thank you.

## FAMILY WORSHIP

5O will lead their family worship in the school hall on **Friday 11<sup>th</sup> November @ 9.00am.**

The following Family Worship will be led by 5D on Friday 25<sup>th</sup> November @ 9am in the school hall.



## ST HELENS 5<sup>TH</sup> LAKE BEAVERS

On Sunday 16<sup>th</sup> October a number of St Ann's Children attended the annual Judges service at Liverpool Cathedral, to represent the St Helens 5<sup>th</sup> Lake Beavers.

The service is to mark the beginning of a new legal year. The scouts were able to meet the judges and learn a bit about what they do. It only happens once a year and the children were part of the procession inside the Cathedral.

The children were a credit to the Beavers and to St. Ann's. Well done Niamh S, Samuel M, Zara M, Niall B, William C and Sonny O.

## A MESSAGE FROM ST HELENS COUNCIL



**ST HELENS**  
BOROUGH COUNCIL

Dear Parent/Carer

### SCHOOL ATTENDANCE – HOLIDAYS DURING TERM TIME

The law governing holidays during school term time was tightened up in September 2013. Parents can not authorise absences, only schools can do this. Headteachers have the discretion to grant leave but only in exceptional circumstances. However, it is highly unlikely that family holidays will be authorised.

Children and families have 175 days off school to spend time together, including weekends and school holidays, therefore schools will prioritise attendance during term time

There is clear evidence that absence from school impacts upon a child's attainment and attendance of 95% and above is deemed to be good. When a child's attendance falls to 90% and below, it is considered to be a persistent absence (PA) and parents and carers may be liable for prosecution by the Local Authority

Yours sincerely

St Helens Education Welfare Service

## SUPER LEADERS

On Friday 4<sup>th</sup> November, we will be embarking on our first Super Leaders afternoon of the year. Super Leaders encourages children to champion different personal development skills such as being effective communicators, team workers and creative thinkers. This year, each class will be given the opportunity to be a member of a new Pupil-Lead Team (as seen below). We can't wait to see the impact each team's ideas have both in our school and in the wider community!

1A	Wellbeing Warriors
1T	Centre Stage Squad
2H	Arts Council
2S	Town Troopers
3E	Sports Leaders
3H	Health & Safety Crew
4F	The Mathmagicians
4H	Values Ambassadors
5D	Equality Advocates
5O	English Ambassadors
6A	Global Change Ambassadors
6M	Digital Leaders







UK Health  
Security  
Agency



# Should I keep my child off school?

## Yes

### Until...

Chickenpox	at least 5 days from the onset of the rash and until all blisters have crusted over
Diarrhoea and Vomiting	48 hours after their last episode
Cold and Flu-like illness (including COVID-19)	they no longer have a high temperature and feel well enough to attend. Follow the national guidance if they've tested positive for COVID-19.
Impetigo	their sores have crusted and healed, or 48 hours after they started antibiotics
Measles	4 days after the rash first appeared
Mumps	5 days after the swelling started
Scabies	they've had their first treatment
Scarlet Fever	24 hours after they started taking antibiotics
Whooping Cough	48 hours after they started taking antibiotics

## No

but make sure you let their school or nursery know about...

Hand, foot and mouth	Glandular fever
Head lice	Tonsillitis
Threadworms	Slapped cheek



SCAN ME

### Advice and guidance

To find out more, search for health protection in schools or scan the QR code or visit <https://qrco.de/minfec>.





# St Ann's Church of England Primary School



*Together, we aim high; with God's love, we can fly!*

Thursday

10<sup>th</sup> November 2022

10.00 am & 1.30pm



## Open Day

*For parents/ carers of children who will start Reception September 2023*



St Ann's Church of England  
Primary School

View Road

Rainhill

Merseyside

L35 0LQ

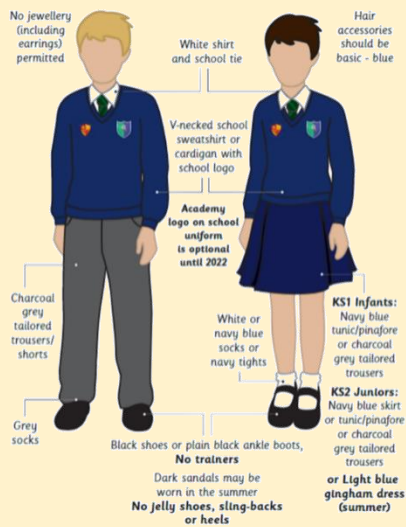
St Ann's is an exceptional Christian school.  
(SIAMS July 2019)





## WEEKLY REMINDERS

### SCHOOL UNIFORM REMINDERS



*\*Please note, it is no longer compulsory to wear items of clothing with the school and Trust logos on. Children may wear plain navy-blue items of school uniform.*

### SCHOOL SHOES REMINDER



## GENERAL INFORMATION

### TOAST

The deadline for Toast (Years 1-6) for next half term (31<sup>st</sup> October – 21<sup>st</sup> December) has now passed. Please see the flyer attached to this Newsletter for details of the payments required for future half terms.

### EARLY YEARS SNACK

Foundation stage children receive Snack on a daily basis. We would be most grateful if you would make payment on Arbor of the following amounts by the due dates:

Autumn 2 - £7.60 by as soon as possible if not already paid

Spring 1 - £5.60 by 16<sup>th</sup> December 2022

Spring 2 - £6.00 by 7<sup>th</sup> February 2023

Summer 1 - £5.80 by 28<sup>th</sup> March 2023

Summer 2 - £6.40 by 22<sup>nd</sup> May 2023

### TERM DATES

Term	Open on	Close on
Autumn Term 2022	5 <sup>th</sup> September 2022	20 <sup>th</sup> October 2022
	31 <sup>st</sup> October 2022	21 <sup>st</sup> December 2022
Spring Term 2023	4 <sup>th</sup> January 2023	10 <sup>th</sup> February 2023
	20 <sup>th</sup> February 2023	31 <sup>st</sup> March 2023
Summer Term 2023	17 <sup>th</sup> April 2023	25 <sup>th</sup> May 2023
	6 <sup>th</sup> June 2023	19 <sup>th</sup> July 2023

### PURCHASING SCHOOL ITEMS

If you wish to purchase a school item this can now be done through Arbor. If you make a purchase please email the school office at [stannsce@three-saints.org.uk](mailto:stannsce@three-saints.org.uk) so that arrangements can be made to issue the item. Current prices are as follows:

**School Bag £9.00**

**Junior Tie £3.50**

**Elasticated Tie £3.00**

**Children's University Passport £3.00**

**Replacement Home School Diary £4.00**

**Courtesy  
Care  
Concentration**



**St. Ann's Church of England Primary School**

View Road, Rainhill, Merseyside, L35 0LQ

Tele: 0151 426 5869

Website: <http://www.rainhillstanns.co.uk>

Email: [stannsce@three-saints.org.uk](mailto:stannsce@three-saints.org.uk)

Twitter: [@RainhillStAnns](https://twitter.com/RainhillStAnns)

Headteacher: Mrs Laura Rynn

‘But those who trust in the Lord, they will find new strength.  
They will soar high on wings like eagles’ **Isaiah 40:31**

**Parents' Suggestion/Comment Slip**



# TOAST

YEARS 1-6

If you would like your child to have Toast every half term please see below for the amount due each half term and the date the amount is required by. Payments should be made to your Arbor Toast account. Payments can be made in advance of these dates if you wish and the credit will be used once the due date arrives.

	Amount Due	Date Toast Account to be in credit by
Autumn 1	£6.80	13th July 2022
Autumn 2	£7.60	17th October 2022
Spring 1	£5.60	16th December 2022
Spring 2	£6.00	7th February 2023
Summer 1	£5.80	28th March 2023
Summer 2	£6.40	22nd May 2023

Total for year £38.20



## DATES FOR DIARY AUTUMN 2022

DAY	DATE	EVENT
Monday	31 <sup>st</sup> October 2022	School Opens
Thursday	3 <sup>rd</sup> November 2022	Outdoor classroom day.
Mon-Fri	7 <sup>th</sup> -11 <sup>th</sup> November 2022	Parent Insight days (class days and times TBC)
Thursday	10 <sup>th</sup> November 2022	Open Day for children starting in Reception in September 2023
Friday	11 <sup>th</sup> November 2022	5O Family Worship
Thursday	17 <sup>th</sup> November 2022	Parent Forum (Reps only)
Friday	18 <sup>th</sup> November 2022	Anti-Bullying Day
Monday	21 November 2022	Assessment Week
Friday	25 <sup>th</sup> November 2022	5D Family Worship
Mon-Fri	28 <sup>th</sup> Nov -2 <sup>nd</sup> Dec 2022	Scholastic Book Fair
Tuesday	29 <sup>th</sup> November 2022	4H Swimming
Wednesday	30 <sup>th</sup> November 2022	4H Swimming
Thursday	1 <sup>st</sup> December 2022	4H Swimming
Friday	2 <sup>nd</sup> December 2022	4H Swimming
Friday	2 <sup>nd</sup> December 2022	4H Family Worship
Mon-Fri	5 <sup>th</sup> -9 <sup>th</sup> December 2022	Mentoring Conversations (class days TBC)
Tuesday	6 <sup>th</sup> December 2022	4H Swimming
Wednesday	7 <sup>th</sup> December 2022	4H Swimming
Thursday	8 <sup>th</sup> December 2022	4H Swimming
Friday	9 <sup>th</sup> December 2022	4H Swimming
Date & Time TBC		Y2 Nativity
Mon-Fri	12 <sup>th</sup> -16 <sup>th</sup> December 2022	Enterprise Week
Tuesday	13 <sup>th</sup> December 2022	4H Swimming
Wednesday	14 <sup>th</sup> December 2022	4H Swimming
Thursday	15 <sup>th</sup> December 2022	4H Swimming
Thursday	15 <sup>th</sup> December 2022	EYs Nativity @ School
Friday	16 <sup>th</sup> December 2022	4H Swimming
Friday	16 <sup>th</sup> December 2022	4F Family Worship
Friday	16 <sup>th</sup> December 2022	Y1 to Panto St Helens Theatre Royal
Monday	19 <sup>th</sup> December 2022	LKS2 Christmas Party-am UKS2 Christmas Party-pm
Tuesday	20 <sup>th</sup> December 2022	EYs & KS1 Christmas Party - am

Tuesday	20 <sup>th</sup> December 2022	Y1 Carol Service @ 2.30pm School
Tuesday	20 <sup>th</sup> December 2022	Christmas Service 2.15pm St Ann's Church -Y3 lead
Tuesday	21 <sup>st</sup> December 2022	School Closes