



# St Ann's Church of England

## Primary School



*Together, we aim high; with God's love, we can fly!*

### Value of the Half Term

*Creation*

### Newsletter Issue 3

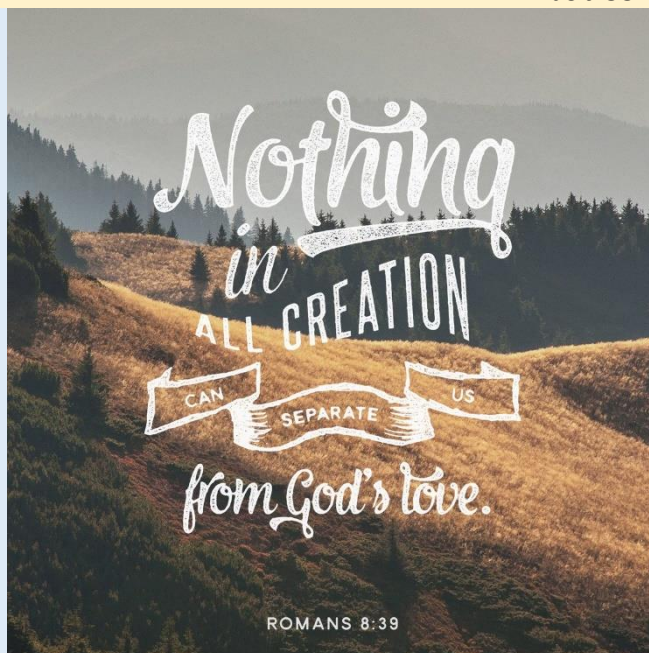
Friday 23 September 2022

The Spirit of God has made me, and the breath of the Almighty gives me life.

Job 33:4

#### CONTENTS

1. Parent Forum 2022-23
2. Instrumental Tuition at St Ann's
3. Numbots and TTRS
4. Health & Safety Notice
5. Y6 Head Teacher Visit
6. Family Worship
7. Macmillan Coffee Morning
8. Height & Weight checks
9. Y4 Cultural Visit
10. Y5 Bikeability
11. Dedication of the Year Service
12. Y4-6 Children's University Graduation
13. Weekly Reminders
14. General Information



### PARENT FORUM 2022-23



Many thanks to all parents who have volunteered to be a Parent Rep this year.

Each class rep can be seen below. The first meeting for our Parent Reps is on **Thursday 17 November @ 2.00pm**. At the meeting there will be an opportunity for reps to contribute to and gain a better understanding of the work of the school. If you would like your class rep to bring something to the attention of the school's leadership team, please speak to them prior to the meeting.

<b>EYR</b>	Miss Charlotte Hitchen	<b>3E</b>	Ms Natalie Aden
<b>EYP</b>	Mrs Hayley Foy	<b>3H</b>	Mrs Rachel Bacon
<b>1A</b>	Mrs Jenn Chilton	<b>4F</b>	VACANCY
<b>1T</b>	Mr Kevin Ball	<b>4H</b>	Mrs Kelly Elliott
<b>2H</b>	VACANCY	<b>5D</b>	Mrs Jennifer Turner
<b>2S</b>	VACANCY	<b>5O</b>	VACANCY
		<b>6A</b>	Miss Liz Hogan
		<b>6M</b>	Mrs Lisa Mogan

KIDS GET THEIR SUPER POWERS BY  
**ATTENDING SCHOOL  
EVERY DAY** ⚡

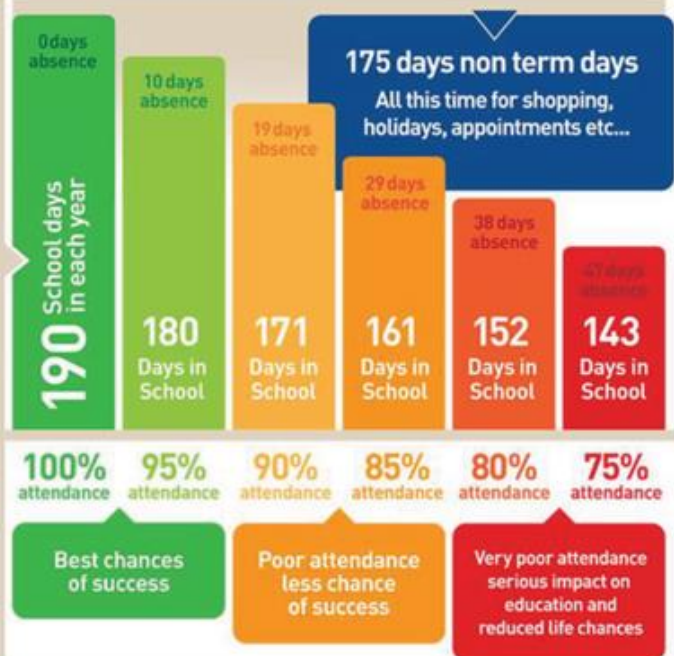
BE AN ATTENDANCE  
**SUPERHERO!**

Whole school attendance year to date. <i>Whole School target 96%</i>	98.0%
Whole school attendance week ending 16 <sup>th</sup> September 2022	97.4%
Class with best weekly attendance	1A & 5D 99.7%

**EVERY  
DAY  
MATTERS**

SCHOOL + YOU = SUCCESS

365 days in a calendar year



### Attendance Expectations

Children are expected to be in school **every day** unless they are unwell. All other reasons will be unauthorised. If your child is going to be absent, contact school and let us know before 9.20am. Children not in school may receive a phone call home or home visit. In line with our Attendance Policy, we are committed to supporting families in improving their child's attendance, before taking legal action.

Number of pupils  
with 100% attendance  
this week

381

### Punctuality

School starts at **8.50am**.  
Lessons start at **8.50am**.

School gates open at 8.40am.

Children arriving after 8.50am will need to use the main entrance. Children who enter school via the main entrance will be registered as late. Regularly missing the beginning of lessons has a negative impact on a child's progress and wellbeing.

## INSTRUMENTAL TUITION AT ST ANN'S



Music greatly enriches the life of a child, both academically and socially, so we are delighted to announce that **The Schools Music Service & St Helens Music Service** will be providing instrumental music tuition in school once again this year.

The **Schools Music Service** will be offering clarinet, flute, guitar and keyboard classes in small group half hour sessions during the school day, while St Helens Music Service will offer string and percussion lessons.

If you would like more information about The Schools Music Service classes you can visit their website on [www.schoolsmusicservice.co.uk](http://www.schoolsmusicservice.co.uk)

## NUMBOTS & TIMESTABLE ROCKSTARS

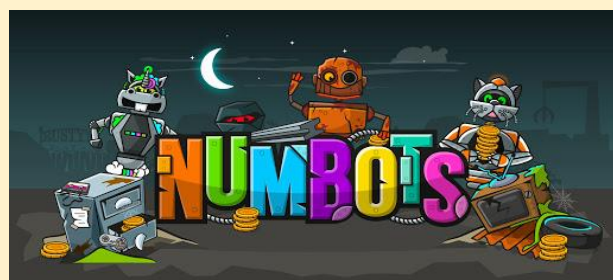
Daily use of Numbots and TTRockstars has been proved to boost number of times table recall speed significantly, impacting positively on children's Mathematical Development.

Just as the expectation at St Ann's is to read for 5 out of every 7 each week, the expectation to access either Numbots (EY - Y2) and TTRockstars (Y2 - Y6) is the same.

The table below shows the number of children who have accessed the programmes in the last 7 days. You can show that your child has accessed either of the programmes by simply ticking the logo off in your child's home school diary. Let's do this!

RP	RR	1A	1T	2H	2S	3E	3H	4F	4H	5D	5O	6A	6M
13	12	9	9	10	7	18	18	17	12	4	6	6	7

### Most Improved



FS:Emilie R & Conall V  
Year 1:Hannah D & Eli B  
Year 2:Zach C & Vinnie H



Year 3:Olly B & Frankie R-B  
Year 4:Thomas R & Stevie S  
Year 5:Isla M & Noah S  
Year 6:Grace M & Joshua O



## HEALTH & SAFETY NOTICE

After collecting your child, unless you are speaking with staff, please leave the school site immediately, and do not allow your child to play in the Early Years play area on their play equipment, or on the trim trail on the field. Thank you for your support with this matter.

### Y6 HEADTEACHER VISIT



Today Mrs Thorogood, the Headteacher at Rainhill High School, along with some pupils, visited our Year 6 children to conduct a question-and-answer session all about life at secondary school.

### FAMILY WORSHIP

Well done to 6A for their family worship all about Black History Month.



### MACMILLAN COFFEE MORNING

WORLD'S BIGGEST  
**COFFEE**  
MORNING

**MACMILLAN**  
CANCER SUPPORT



On Friday 30th September at 9:30, Year 6 will be hosting a coffee morning to raise money for Macmillan Cancer Support. This has been a very popular event in the past and we have managed to raise impressive amounts for a great cause! Everyone is welcome to join us for a tea or coffee, a catch-up and something sweet. Children are encouraged to bring a donation of cakes to school on Friday morning (homemade or store bought – we don't mind!) which will be sold by year 6 students in the hall.

To ensure nobody misses out, every child will be allowed to bring a cake to school with them as a snack, to enjoy in their classrooms during the day. Year 4 will be able to take their cake on their trip.

Please remember that cakes must not include nuts.

We look forward to seeing you there!

*Please note EY - Y5 children will not be present at the coffee morning.*

## EARLY YEARS & YEAR 6 HEIGHT & WEIGHT CHECKS

On **Thursday 6 October** all children in EYFS & Year 6 will have their height and weight checked by the school screening service.

## YEAR 4 CULTURAL VISIT

On Friday 30 September Y4 will go on a cultural visit to the World Museum and Walker Art Gallery. This is the visit that was postponed due to the heatwave when the children were in Y3. Please refer to the emails that have been sent out, for further details.

## YEAR 5 BIKABILITY



We have been given the excellent opportunity to provide funded Bikeability Training, at Level 1 + 2, to children in Y5. Each child will have a full day with Bikeability on:

5O: Monday 3rd October – Friday 7th October. 6 children per day.

5D: Monday 10th October – Friday 14th October. 6 children per day.

Your child will need to bring their bike, helmet and suitable clothes (outdoor PE kit) into school on the date of their session. Your child's class teacher will confirm which children will complete Bikeability on which day and you will receive an in-app message via Arbor to confirm this. This will be the week before their classes scheduled Bikeability week. **Remember:** consent forms need to be completed **directly** to Bikeability using the below link. If your child does not have consent on the day that they are allocated, they will be unable to participate, and their place will be unable to be rescheduled.

<https://bikeright.co.uk/events/2ff431c0-3a8e-46ac-9b05-45d84dd7936b/>

## DEDICATION OF THE YEAR SERVICE FOR EARLY YEARS & OTHER NEW STARTERS

On **Friday 7 October at 9.30am**, our Dedication of the School Year Service will take place at St Ann's Church. This is the service where we officially welcome our Reception children and all other children new to our school since this time last year.

Parents/Carer of all our new starters are encouraged to join us for the service.

## Y4-Y6 CHILDREN'S UNIVERSITY GRADUATION



We are looking forward to our 2021-2022 Children's University Graduation Ceremony which will take place next week. Children who have accumulated enough hours in the last academic year will receive their certificates at St Ann's Church on Monday 26th September. If you have received an email inviting you to the ceremony, you are welcome to join us from 2 o'clock.

### *What is Children's University?*

The Children's University is a national scheme to improve standards of education and recognises that not all learning takes place in school. The aim is to increase participation of children aged 5 to 14 years in quality out of school hours learning at a network of 'learning destinations'.

### *Why is my child graduating?*

Children collect hours by attending extra-curricular activities and after school clubs and also by participating in some school activities such as Super Leaders. These hours are banked termly and are cumulative, meaning they accumulate over their time in school, so they can keep on adding to their tally each year.

### *What is a Learning Passport?*

Learning Passports can be purchased from the school office at a cost of £3.00. These passports are used to keep a record of out of school activities that are recognised by the Children's University. These passports are collected regularly and the hours are tracked by the school. Learning Passports are not required for extra-curricular activities that take place in school as we keep thorough registers.

### *Can my child still graduate?*

This graduation ceremony is celebrating the achievements of children from the academic year 2021 - 2022 but as hours are accumulated, your child may earn enough hours to graduate at our 2022-2023 ceremony. Graduation ceremonies only take place for children in Y3 - Y6. If your child is in KS1 and you think that they have earned enough hours to graduate, they will receive their awards at their first ceremony when they are in Year 3.

# Should I keep my child off school?

## Yes

### Until...

Chickenpox	at least 5 days from the onset of the rash and until all blisters have crusted over
Diarrhoea and Vomiting	48 hours after their last episode
Cold and Flu-like illness (including COVID-19)	they no longer have a high temperature and feel well enough to attend. Follow the national guidance if they've tested positive for COVID-19.
Impetigo	their sores have crusted and healed, or 48 hours after they started antibiotics
Measles	4 days after the rash first appeared
Mumps	5 days after the swelling started
Scabies	they've had their first treatment
Scarlet Fever	24 hours after they started taking antibiotics
Whooping Cough	48 hours after they started taking antibiotics

## No

but make sure you let their school or nursery know about...

Hand, foot and mouth	Glandular fever
Head lice	Tonsillitis
Threadworms	Slapped cheek



SCAN ME

### Advice and guidance

To find out more, search for **health protection in schools** or scan the QR code or visit <https://qrco.de/minfec>.

## WEEKLY REMINDERS

### TOAST

The deadline for Toast (Years 1-6) for this half term has now passed. Please see the flyer attached to this Newsletter for details of the payments required for future half terms.

### EARLY YEARS SNACK

Foundation stage children receive Snack on a daily basis. We would be most grateful if you would make payment on Arbor of the following amounts by the due dates:

Autumn 1 - £6.80 at your earliest convenience

Autumn 2 - £7.60 by 17<sup>th</sup> October 2022

Spring 1 - £5.60 by 16<sup>th</sup> December 2022

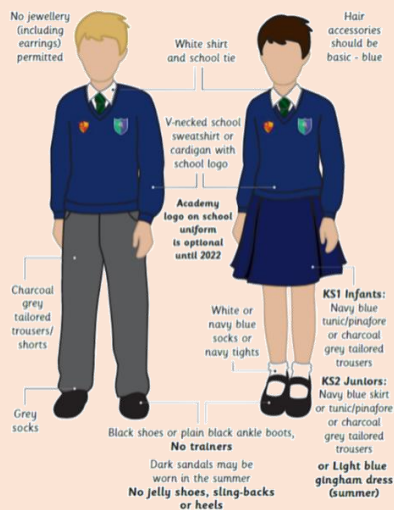
Spring 2 - £6.00 by 7<sup>th</sup> February 2023

Summer 1 - £5.80 by 28<sup>th</sup> March 2023

Summer 2 - £6.40 by 22<sup>nd</sup> May 2023

## GENERAL INFORMATION

### SCHOOL UNIFORM REMINDERS



*\*Please note, it is no longer compulsory to wear items of clothing with the school and Trust logos on. Children may wear plain navy-blue items of school uniform.*

### SCHOOL SHOES REMINDER



### TERM DATES

Term	Open on	Close on
Autumn Term 2022	5 <sup>th</sup> September 2022	20 <sup>th</sup> October 2022
	31 <sup>st</sup> October 2022	21 <sup>st</sup> December 2022
Spring Term 2023	4 <sup>th</sup> January 2023	10 <sup>th</sup> February 2023
	20 <sup>th</sup> February 2023	31 <sup>st</sup> March 2023
Summer Term 2023	17 <sup>th</sup> April 2023	25 <sup>th</sup> May 2023
	6 <sup>th</sup> June 2023	19 <sup>th</sup> July 2023

### PURCHASING SCHOOL ITEMS

If you wish to purchase a school item this can now be done through Arbor. If you make a purchase please email the school office at [stannsce@three-saints.org.uk](mailto:stannsce@three-saints.org.uk) so that arrangements can be made to issue the item. Current prices are as follows:

**School Bag £9.00**

**Junior Tie £3.50**

**Elasticated Tie £3.00**

**Children's University Passport £3.00**

**Replacement Home School Diary £4.00**



**Courtesy**  
**Care**  
**Concentration**



**St. Ann's Church of England Primary School**

View Road, Rainhill, Merseyside, L35 0LQ

Tele: 0151 426 5869

Website: <http://www.rainhillstanns.co.uk>

Email: [stannsce@three-saints.org.uk](mailto:stannsce@three-saints.org.uk)

Twitter: [@RainhillStAnns](https://twitter.com/RainhillStAnns)

Headteacher: Mrs Laura Rynn

‘But those who trust in the Lord, they will find new strength.  
They will soar high on wings like eagles’ **Isaiah 40:31**

**Parents' Suggestion/Comment Slip**

# TOAST

YEARS 1-6

If you would like your child to have Toast every half term please see below for the amount due each half term and the date the amount is required by. Payments should be made to your Arbor Toast account. Payments can be made in advance of these dates if you wish and the credit will be used once the due date arrives.

	Amount Due	Date Toast Account to be in credit by
Autumn 1	£6.80	13th July 2022
Autumn 2	£7.60	17th October 2022
Spring 1	£5.60	16th December 2022
Spring 2	£6.00	7th February 2023
Summer 1	£5.80	28th March 2023
Summer 2	£6.40	22nd May 2023

Total for year £38.20

## DATES FOR DIARY AUTUMN 2022

DAY	DATE	EVENT
Monday	26 <sup>th</sup> September 2022	Y4-Y6 Children's University Graduation St Ann's Church 2pm
Friday	30 <sup>th</sup> September 2022	MacMillan Coffee Morning-Y6 lead
Friday	30 <sup>th</sup> September 2022	Y4 Cultural Offer Visit – Walker Art Gallery
Mon-Fri	3-14 <sup>th</sup> October 2022	Y5 Bikeability
Thursday	6 <sup>th</sup> October 2022	National Poetry Day
Thursday	6 <sup>th</sup> October 2022	EYs – Y6 Height & Weight Check
Friday	7 <sup>th</sup> October 2022	Dedication of the Year Service (Time TBC) EYFS & New Starters St Ann's Church
Friday	14 <sup>th</sup> October 2022	Individual & Family Photo Day
Tuesday	18 <sup>th</sup> October 2022	EYs – Y6 Fluenz Session
Tuesday	18 <sup>th</sup> October 2022	4F swimming
Wednesday	19 <sup>th</sup> October 2022	4F swimming
Thursday	20 <sup>th</sup> October 2022	4F swimming
Thursday	20 <sup>th</sup> October 2022	Harvest Service (Time TBC) St Ann's Church -Y4 to lead
Thursday	20 <sup>th</sup> October 2022	School Closes
Monday	31 <sup>st</sup> October 2022	School Opens
Thursday	3 <sup>rd</sup> November 2022	Outdoor classroom day.
Mon-Fri	7 <sup>th</sup> -11 <sup>th</sup> November 2022	Parent Insight days (class days and times TBC)
Thursday	10 <sup>th</sup> November 2022	Open Day for children starting in Reception in September 2023
Friday	11 <sup>th</sup> November 2022	5O Family Worship
Thursday	17 <sup>th</sup> November 2022	Parent Forum (Reps only)
Friday	18 <sup>th</sup> November 2022	Anti-Bullying Day
Monday	21 November 2022	Assessment Week
Friday	25 <sup>th</sup> November 2022	5D Family Worship
Mon-Fri	28 <sup>th</sup> Nov -2 <sup>nd</sup> Dec 2022	Scholastic Book Fair
Tuesday	29 <sup>th</sup> November 2022	4H Swimming
Wednesday	30 <sup>th</sup> November 2022	4H Swimming
Thursday	1 <sup>st</sup> December 2022	4H Swimming
Friday	2 <sup>nd</sup> December 2022	4H Swimming
Friday	2 <sup>nd</sup> December 2022	4H Family Worship
Mon-Fri	5 <sup>th</sup> -9 <sup>th</sup> December 2022	Mentoring Conversations (class days TBC)
Tuesday	6 <sup>th</sup> December 2022	4H Swimming

Wednesday	7 <sup>th</sup> December 2022	4H Swimming
Thursday	8 <sup>th</sup> December 2022	4H Swimming
Friday	9 <sup>th</sup> December 2022	4H Swimming
Date & Time TBC		Y2 Nativity
Mon-Fri	12 <sup>th</sup> -16 <sup>th</sup> December 2022	Enterprise Week
Tuesday	13 <sup>th</sup> December 2022	4H Swimming
Wednesday	14 <sup>th</sup> December 2022	4H Swimming
Thursday	15 <sup>th</sup> December 2022	4H Swimming
Thursday	15 <sup>th</sup> December 2022	EYs Nativity @ School
Friday	16 <sup>th</sup> December 2022	4H Swimming
Friday	16 <sup>th</sup> December 2022	4F Family Worship
Friday	16 <sup>th</sup> December 2022	Y1 to Panto St Helens Theatre Royal
Monday	19 <sup>th</sup> December 2022	LKS2 Christmas Party-am UKS2 Christmas Party-pm
Tuesday	20 <sup>th</sup> December 2022	EYs & KS1 Christmas Party - am
Tuesday	20 <sup>th</sup> December 2022	Y1 Carol Service @ 2.30pm School
Tuesday	20 <sup>th</sup> December 2022	Christmas Service 2.15pm St Ann's Church -Y3 lead
Tuesday	21 <sup>st</sup> December 2022	School Closes