

Newsletter Issue 12: Friday 28 November 2025



St Ann's Church of England Primary School



Together, we aim high; with God's love, we can fly!



RAINHILL CHRISTMAS LIGHTS SWITCH ON



Our school choir were delighted to take part in the Rainhill Community Christmas Light Switch-On this weekend. The children sang beautifully in front of a large audience and represented our school with pride, enthusiasm and festive cheer. It was wonderful to see so many families and members of the community supporting the event and we are incredibly proud of the dedication and hard work the choir have shown in preparing for their performance. A huge well done to all involved! We hope that you will join us for our next festive performance on Sunday 14th December at St Ann's Church.

KIDS GET THEIR SUPER POWERS BY
**ATTENDING SCHOOL
 EVERY DAY** ⚡

BE AN ATTENDANCE
 SUPERHERO!

Whole school attendance year to date <i>Whole School target 96%</i>	96.43%
Whole school attendance week ending 21 st November 2025	95.76%
Class with best weekly attendance	3S – 100%

Attendance Expectations

Children are expected to be in school **every day** unless they are unwell. All other reasons will be unauthorised. If your child is going to be absent, contact school and let us know before 9.25am. Children not in school may receive a phone call home or home visit. In line with our Attendance Policy, we are committed to supporting families in improving their child's attendance, before taking legal action.

#EveryMomentMatters



**Number of pupils
 with 100% attendance
 this week**

312

Punctuality

School gates open at **8.40am**
 School gates close at **8.50am**
 School starts at **8.55am**

Children arriving after 8.50am will need to use the main entrance. Children who enter school via the main entrance will be registered as late. Regularly missing the beginning of lessons has a negative impact on a child's progress and wellbeing.

FAMILY WORSHIP

Congratulations to 4G on a wonderful Family Worship all about Universal Children's Day.

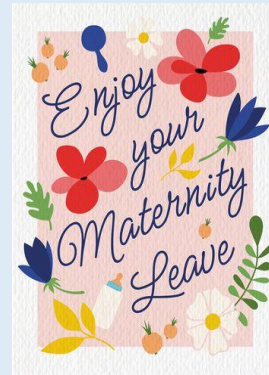


Our next Family Worship will be led by 3S and take place on **Friday 5 December at 9am**. Please enter the hall via the back door.

Everyone welcome

GOODBYE & GOOD LUCK MISS FOSTER

We wish Miss Foster all the very best as she begins her maternity leave. We hope this special time is filled with joy, rest, and excitement as she awaits the arrival of her little one. We look forward to hearing the wonderful news of those tiny feet very soon!



CHRISTINGLE SERVICE

Following on from our Christingle making today, why not come and join in with the Christingle Service at church this **Sunday 30 November at 4pm**.



SCHOOL NURSE DROP IN



The School Nurse is holding a drop in session for parents on **Tuesday 2 December at 8.30am**

CHRISTMAS DINNER AND JUMPER DAY



On **Friday 12 December**, we will be supporting *Save the Children* by inviting pupils to come to school wearing their Christmas jumpers, festive outfits, or seasonal accessories. The suggested voluntary donation is £2.00, which can be made via Arbor. On the same day, children who have a school meal will be treated to a special Christmas dinner at lunchtime. We look forward to a joyful, festive day while raising money for a wonderful cause! 🎄

MENTORING CONVERSATIONS

We are delighted to announce that our Autumn Term Mentoring Conversations will take place on **Monday 8 and Tuesday 9 December, from 3:30–6:00pm.**

This year, conversations will once again be held face-to-face at school.

- EYs, Year 1 & Year 2: Sessions will take place in the Studio. Please enter via the Blue Base door.
- Year 3, Year 4, Year 5 & Year 6: Sessions will take place in the Hall. Please enter via the back hall door.

If you need to move between the Hall and the Studio, please use the pedestrian walkway at the side of the school building.

At St Ann's, we value the active involvement of children in their Mentoring Conversations. We therefore encourage parents and carers to bring their child along, either by returning to school or collecting them from Base as needed. Children in Base should be collected from the Blue Base door as usual.

These conversations offer a valuable opportunity to discuss your child's progress, achievements, and wellbeing with their teacher. Appointments can be conveniently booked via the Arbor platform.

We encourage all families to take part in this important opportunity to share insights, celebrate successes, and support each child's continued learning journey.



THIS WEEK'S CHARACTER EDUCATION VIDEO LINK AND TAKE-HOME QUESTIONS (Y1-Y6)

We're watching a video series about how students can develop a growth mindset!

Watch it at: <https://ideas.classdojo.com/f/the-high-dive/0> and ask your child these questions tonight.

1. How did Mojo feel after his attempt to jump from the high dive? How do you know?
2. Think about a time you faced a big challenge. How did you feel? What happened?
3. Mojo felt "defeated." What other words can you use to share how you might feel in this situation?

A SPOTLIGHT ON: PARENT FORUM



At St Ann's, we are proud to have a Parent Forum that serves as an essential channel of communication between home and school.

Purpose and Function

The Parent Forum meets regularly to celebrate the achievements of our school and to provide valuable parental perspectives on various agenda items.

- **Meeting Frequency:** The forum convenes once per term, ensuring that discussions are timely and relevant.
- **Support from Leadership:** Meetings are supported by the school's senior leadership team, fostering a collaborative environment.
- **Documentation:** Minutes from each meeting are posted on the school website, and at the end of the academic year, an impact report is produced and also made available online.

Representation

Parents can nominate themselves to serve as their child's Class Representative. In the event that multiple parents or carers express interest in representing a particular class, a random selection process will be employed to choose a representative from those who have not previously held the role. Parents or carers who have served in the position before may be eligible to represent again, provided there are no other candidates interested.

Agenda Items

The Parent Forum discusses a variety of important topics, including:

- Review of school aims
- Review school inclusion policy statement
- Parent Insight Sessions
- Homework and school applications
- Promotion of online safety
- Analysis of parent and pupil surveys
- Pupil mental health and wellbeing
- School Hardship Fund
- Cultural and curriculum visits
- School policies
- Fund raising



This structured approach ensures that the voices of parents are heard and that they play an active role in shaping the educational experience at St Ann's.

*Our next Parent Forum session for our Reps will take place on **Thursday 22 January at 2pm**. Please speak to your child's Class Parent Rep should wish for anything to be raised at the meeting. We look forward to seeing our Reps then.*

KS1 NATIVITY

Y1 & Y2 will perform their nativity on:
Monday 15 December @ 9.30am
Monday 15 December @ 2.00pm
Tuesday 16 December @ 9.30am
Tuesday 16 December @ 2.00pm

A total of 4 tickets per family can be purchased at a cost of £2 per ticket. A link was sent out on 25th November to confirm your ticket preferences. Once the link has been completed please access 'Key Stage 1 Nativity' on Arbor to make payment for your tickets. The deadline for payments is 4th December.

The nativity will take place in the school hall.

EYFS NATIVITY

EYP & EYM will perform their nativity on:

Wednesday 17th December
9.30am for EYM parents/ carers
2.00pm for EYP parents/ carers

The nativity will take place in the school hall, each child will be issued with 2 tickets.

OFFICE HOURS

We kindly ask for your patience and support during a period of reduced capacity in our school office. Please note that the office will close at 3:30pm each day until further notice. During this time, responses to calls and emails may take a little longer than usual, and we appreciate your understanding as we do our best to assist everyone.

Thank you for your continued cooperation and support.



HOLIDAY ACTIVITIES AND FOOD (HAF) PROGRAMME – WINTER 2025

If your child is aged 4–18 and eligible for benefit-related free school meals, or is in receipt of a support plan or EHCP, they may be able to take part in the Winter 2025 HAF programme. A full list of providers offering activities is available in our **HAF Winter 2025 Guide** (PDF, 26 MB), presented in a handy calendar format to help you plan day-by-day activities throughout the school holidays. You'll find a range of **FREE events and activities**, clearly marked with suitable age ranges. While all sessions are SEND-friendly, we recommend pre-booking and contacting the facilitator directly to discuss suitability and any individual requirements your child may have.

Y1 PANTO VISIT

On **Monday 8 December** Y1 will watch the Christmas Panto at St Helens Theatre Royal. For further information parents/ carers should refer to separate letter.

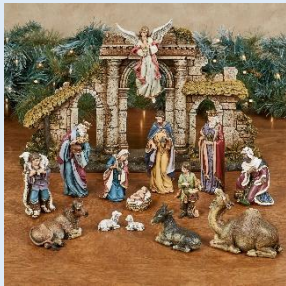


Y6 WORLD MUSEUM VISIT

On **Tuesday 2 December** Y6 will visit Liverpool's World Museum. For further information parents/ carers should refer to separate letter.



Y2 VISIT TO FAMILY NATIVITY SETS SPECIAL

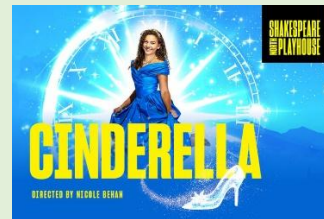


On **Friday 12 December**, Year 2 will visit St Ann's Church to explore the exhibition of family Nativity sets. The children will enjoy viewing the displays and listening to a special Christmas talk

from a member of the PCC, helping them reflect on the meaning of the Nativity.

Y3 SHAKESPEARE PLAYHOUSE VISIT

On **Wednesday 17 December** Y3 will watch this year's Christmas play at the Shakespeare Playhouse in Prescot. For further information parents/ carers should refer to separate letter.



SCHOOL NURSE DROP IN SESSION



Tuesday 2nd December 8.30am-9.15am
If you can arrive at the front office, a member of staff will be able to support.

Thank you



CHRISTMAS PARTIES



It's nearly Christmas party time! Dates and times can be seen below. On the day of your child's Christmas party, they should wear their party clothes to school (bearing in mind that we will still be outside at playtime and lunchtime), and bring in one Christmas party snack e.g. packet of crisps or chocolate bar (all nut free and no hard boiled sweets) please.

Y2	Wednesday 17 December
EYS, Y1, Y3 & Y4	Thursday 18 December
Y5 & Y6	Friday 19 December



SAFEGUARDING ALERT

Stranger Danger

NEVER-Agree to meet a stranger.

NEVER-Go anywhere or do anything with someone that you do not know.

NEVER-Take sweets or presents from someone you do not know.

NEVER-Never get into a car or vehicle of someone you do not know.

NEVER-Give personal details to a stranger.

ALWAYS -Tell your parents or responsible adult where you are going.

ALWAYS -Arrange a time to be back and **STICK** to it.

ALWAYS -Look out for your friends when you're out and about.

ALWAYS -Know your address and contact number for a responsible adult in an emergency.



Y3 CHURCH SERVICE

On Friday 19 December at St Ann's Church, Y3 will lead this year's Christmas Service at 2.15pm.



Everyone welcome!

Family of Faith



A Reflection from Mrs Bayley

Jeremiah 17:7–8 paints a powerful picture of what it means to place our full trust in God. The image of a tree planted by water reminds us that when our roots are grounded in the Lord, we draw strength, peace, and guidance from a source that never runs dry. Life inevitably brings times of “heat” and “drought”—moments of challenge, uncertainty, or worry. Yet the person who trusts in God does not need to be overcome by fear. Instead, like the well-watered tree, they remain steady and continue to bear good fruit, even when circumstances are difficult. This verse invites us to see trust not as passive hope, but as active dependence on God’s constant presence. When we choose to trust Him, we discover resilience, courage, and life that endures. Trust becomes the foundation that sustains us, helping us flourish in every season.

Our Christian Value this half term is...

TRUST

Blessed is the man who trusts in the LORD, whose trust is the LORD. He is like a tree planted by water, that sends out its roots by the stream, and does not fear when heat comes, for its leaves remain green, and is not anxious in the year of drought, for it does not cease to bear fruit.

Jeremiah 17:7-8

St Ann’s Church Services

8:30am Sundays: Traditional Book of Common Prayer Holy Communion in Church. All welcome.

10:30am First Sunday: All Together For Worship – lively, inclusive parish service in Church.

10:30am Other Sundays:

- 2nd Sunday: Common Worship Communion (lighter service)
- 3rd Sunday: Morning Prayer and Teaching
- 4th Sunday: Formal Eucharist

(All in Church, concurrent with Platform 2)

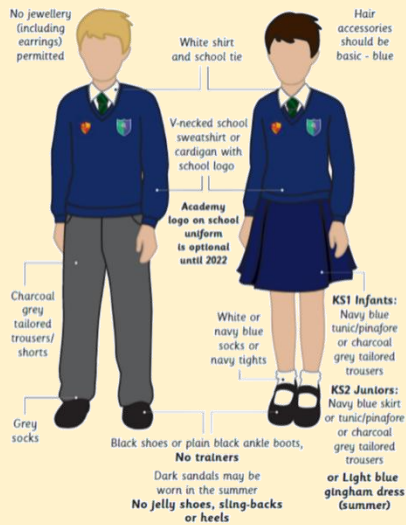
10:30am Weekly (except 1st Sunday): Platform 2 in Millennium Centre – informal, family-focused worship with group activities, crafts, and games. Coffee and refreshments provided.

Thursdays 9:30am: Midweek Holy Communion in Church, followed by coffee in the Centre.



GENERAL INFORMATION/REMINDERS

SCHOOL UNIFORM REMINDERS



**Please note, it is not compulsory to wear items of clothing with the school and Trust logos on. Children may wear plain navy-blue items of school uniform.*

SCHOOL SHOES REMINDER



INDIVIDUAL HEALTH CARE PLANS

If you have previously notified school that your child has a medical condition, you will have received a form to complete as part of our annual review process. We still have a number of forms outstanding, ***your early attention to this matter would be greatly appreciated and this helps with our efficiency.***

If your child has a newly diagnosed condition that requires an Individual Health Care Plan please contact the school office to arrange for a form to be completed.

CONTACT DETAILS, CONSENT & PERMISSIONS

On a regular basis please check your contact details, consent and permissions on Arbor to make sure they are up to date for your child. Thank you

MELLOR'S SCHOOL MEAL MENU

For a copy of Mellor's most up to date school meals menu, please check out our website by clicking on the following link: <https://www.rainhillstanns.co.uk/page/?title=School+Dinner+Menu&pid=46>

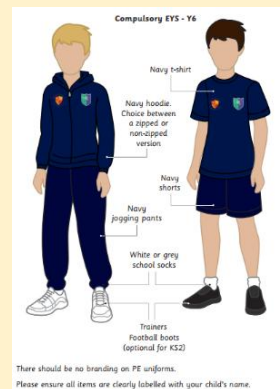
Please note, the menu is subject to change where there is a shortage of supplies.

PE KIT EXPECTATIONS

At St Ann's, children wear their PE kit to school on the days they have PE lessons. We view the PE kit as an important extension of our school uniform, and therefore, we expect the same high standards of dress to be maintained.

All children are required to wear:

- Navy blue t-shirt
- Navy blue hoody
- Navy blue shorts
- Navy blue jogging bottoms
- Trainers



These items can be plain or feature the school and Trust logo. Please note that branded sportswear is not permitted.

Additionally, trainers should only be worn on PE days and are not acceptable as everyday footwear.

If a child arrives without the correct PE kit, the school will provide suitable clothing for them to wear during the day.

We appreciate your continued cooperation and support in helping us uphold these standards.

TOAST

The deadline for toast for this half term has now passed. Please see the flyer attached to this newsletter for details of the payments required for future half terms.

PURCHASING SCHOOL ITEMS

If you wish to purchase a school item this can now be done through Arbor. If you make a purchase please email the school office at stannsce@three-saints.org.uk so that arrangements can be made to issue the item. Current prices are as follows:

School Bag £10.00
Junior Tie £4.00
Elasticated Tie £3.50

TERM DATES 2025-26

Term	Open on	Close on
Autumn Term 2025	Wednesday 3 September 2025	Friday 24 October 2025
	Monday 3 November 2025	Friday 19 December 2025
Spring Term 2026	Monday 5 January 2026	Friday 13 February 2026
	Monday 23 February 2026	Friday 27 March 2026
Summer Term 2026	Monday 13 April 2026	Thursday 21 May 2026
	Monday 1 June 2026	Friday 17 July 2026

Easter Bank Holidays:
Good Friday: 3 April 2026
Easter Monday: 6 April

Bank Holidays during term time:
Monday 4 May 2026

Inset Days:
1 September 2025
2 September 2025
21 November 2025
22 May 2026
20 July 2026

Courtesy

Care

Concentration



St. Ann's Church of England Primary School

View Road, Rainhill, Merseyside, L35 0LQ
Tele: 0151 426 5869

Website: <http://www.rainhillstanns.co.uk>

Email: stannsce@three-saints.org.uk

X: [@RainhillStAnns](https://twitter.com/RainhillStAnns)

Headteacher: Mrs Laura Rynn

‘But those who trust in the Lord, they will find new strength.
They will soar high on wings like eagles’ **Isaiah 40:31**

Parents' Suggestion/Comment Slip

Online symptom checker

Alder Hey Children's Hospital has an online symptom checker with advice on treating common symptoms in children. Visit the website:

www.alderhey.nhs.uk/symptom-checker

Pharmacy Services

Your local pharmacy can treat minor illnesses with over-the-counter treatments, and most pharmacies can also offer prescription medicine for conditions, including:

- Impetigo (aged 1 year and over)
- Infected insect bites (aged 1 year and over)
- Earache (aged 1 to 17 years)
- Sore throat (aged 5 years and over)
- Sinusitis (aged 12 years and over)



Scan here to find out more



A&E

A&E is for people with life threatening illness or injury, so if you think your child needs immediate attention, then you should attend A&E.

Conditions that require immediate attention include:

- Shortness of breath
- Seizures
- Severe bleeding or burns
- Head or eye injuries
- Allergic reactions
- Serious animal bites
- Uncontrolled pain



GP Services

Your GP can help with common illnesses including:

- Persistent coughs
- Skin infections
- Eye infections
- Ear pain



Urgent treatment / walk-in centres

If your GP surgery is closed, UTCs have specialist nurses and doctors that can help. Common conditions that can be treated include:

- Cuts and scrapes
- Minor burns
- Minor breathing difficulties
- Suspected fractures
- Uncontrolled fever



Find your local Urgent Treatment Centre

St Helens Urgent Treatment Centre
The Millennium Centre, Corporation St, St Helens WA10 1HJ
8am-8pm, 7 days a week incl. Bank Holidays

Runcorn Urgent Treatment Centre
Nightingale Building, Hospital Way, Runcorn WA7 2DA
8am-9pm, 7 days a week incl. Bank Holidays

Widnes Urgent Treatment Centre
Health Care Resource Centre, Caldwell Rd, Widnes WA8 7GD
8am-9pm, 7 days a week incl. Bank Holidays

Huyton NHS Walk-in Centre
Nutmeg Villa, Westmorland Road, Huyton L36 6GA
8am-8pm, 7 days a week incl. Bank Holidays

Kirkby Urgent Treatment Centre
St Chads Clinic, St Chads Drive, Kirkby L32 8RE
8am-8pm, 7 days a week incl. Bank Holidays

Halewood NHS Walk-in Centre
The Halewood Centre, Roseheath Drive, Halewood L26 9UH
8am-8pm, 7 days a week incl. Bank Holidays

If your child is struggling to breathe or loses consciousness, you should call 999

Christingle

Sunday November 30th, 4.00pm

Christmas Fair & Farmers Market

Saturday December 6th,
9.00am to 1.00pm

Family Nativity Sets Special

Friday and Saturday
December 12th - 13th,
10.00am - 4.00pm

Carol Service

Sunday December 14th, 6.30pm
Led by Community Choir

Carol & Crib Service

Christmas Eve, 4.00pm

Midnight Communion

Christmas Eve, 11.30pm

Christmas Communion

Christmas Day, 10.30am

St Ann's Church, View Road, Rainhill



The Three Saints Academy Trust
SCHOOL TERMS AND HOLIDAY DATES 2026/2027

Term	*Open On:	*Close On:
<u>Autumn term 2026</u>	2 nd September 2026	23 rd October 2026
	4 th November 2026	18 th December 2026
<u>Spring term 2027</u>	5 th January 2027	12 th February 2027
	22 nd February 2027	25 th March 2027
<u>Summer term 2027</u>	12 th April 2027	28 th May 2027
	7 th June 2027	21 st July 2027

Bank Holidays during term time:

May Day: Monday 3 May 2027

Staff Inset Days

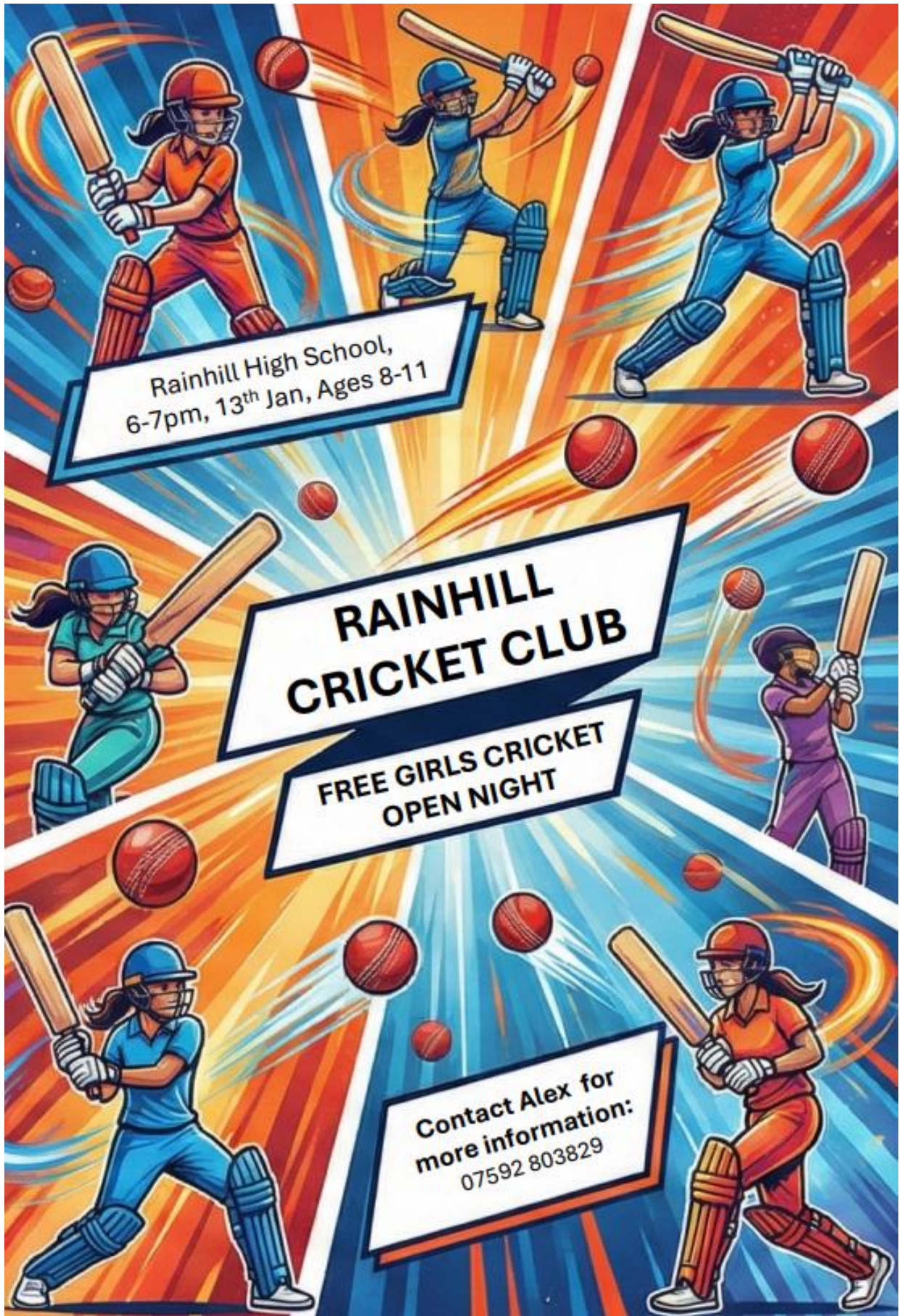
1st September 2026

2nd November 2026

3rd November 2026

20th November 2026

4th January 2027



Rainhill High School,
6-7pm, 13th Jan, Ages 8-11

RAINHILL CRICKET CLUB

FREE GIRLS CRICKET
OPEN NIGHT

Contact Alex for
more information:
07592 803829

TOAST

If you would like your child to have Toast every half term please see below for the amount due each half term and the date the amount is required by. Payments should be made to your Arbor Toast account. Payments can be made in advance of these dates if you wish and the credit will be used once the due date arrives.

	Amount Due	Date Toast Account to be in credit by
Autumn 1	£9.50	Midday 17th July 2025
Autumn 2	£8.50	Midday 21st October 2025
Spring 1	£7.50	Midday 16th December 2025
Spring 2	£6.25	Midday 10th February 2026
Summer 1	£5.75	Midday 24th March 2026
Summer 2	£8.75	Midday 15th May 2026

Total for year £46.25

CANCER
RESEARCH
UK

STEPORTEREVENTS.COM

FAMILY
friendly



Christmas FAMILY!
DISCO BINGO

RAINHILL EX-SERVICES CLUB

SATURDAY DECEMBER 20TH

TICKETS £7.50 VIA 07843 230797 OR STEBENNETT1@HOTMAIL.CO.UK

RAINHILL EX-SERVICE CLUB, 561 WARRINGTON ROAD, L35 4LS

DOORS 1PM
SHOW 2PM