



St Ann's Church of England Primary School



Together, we aim high; with God's love, we can fly!

Value of the Half Term

Hope

Newsletter Issue 33

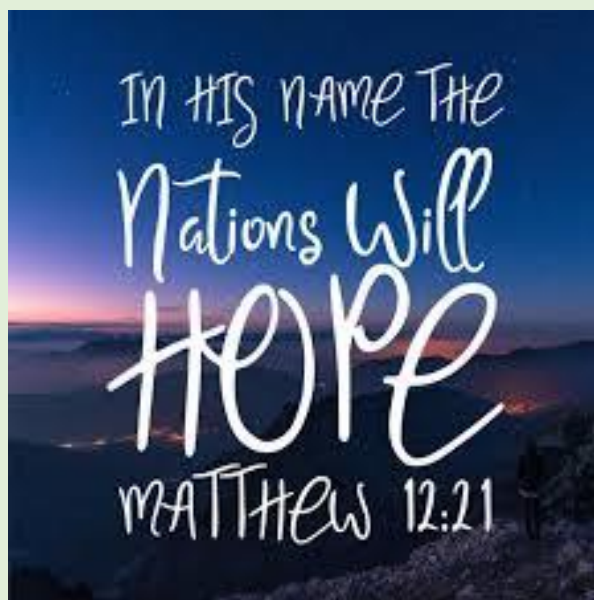
Friday 6 June 2025

For I know the plans I have for you, declares the LORD, plans for welfare and not for evil, to give you a future and a hope.

Jeremiah 29:11

CONTENTS

1. Good Luck Year 1 & Year 4
2. EYP Family Worship
3. Y5/6 Lake District Family Briefing
4. 2025/26 Term Dates
5. Assessment Week
6. A Spotlight on Super Leaders
7. Recommended Reads
8. Early Years Drop-in sessions
9. Y6 Leavers Service
10. Y2 Visit to The Philharmonic
11. Y6 Communion
12. Class Photograph Day
13. Own Clothes Day
14. Safeguarding Top Tip #29
17. General Information



GOOD LUCK YEAR 1 & YEAR 4

Please join us in wishing our Y1 and Y4 children the best of luck as they prepare to undertake their Phonic Screening Check and Multiplication Timetable Check next week!

We are incredibly proud of the hard work and dedication they have shown in their learning. They've got this! It is your time to SHINE 😊

KIDS GET THEIR SUPER POWERS BY
**ATTENDING SCHOOL
EVERY DAY** ⚡

BE AN ATTENDANCE
SUPERHERO!

Whole school attendance year to date <i>Whole School target 96%</i>	96.59%
Whole school attendance week ending 23 rd May 2025	93.52%
Class with best weekly attendance	1T – 99.62 %

#EveryMomentMatters



Attendance Expectations

Children are expected to be in school **every day** unless they are unwell. All other reasons will be unauthorised. If your child is going to be absent, contact school and let us know before 9.25am. Children not in school may receive a phone call home or home visit. In line with our Attendance Policy, we are committed to supporting families in improving their child's attendance, before taking legal action.

**Number of pupils
with 100% attendance
this week**

370

Punctuality

School gates open at **8.40am**
School gates close at **8.50am**
School starts at **8.55am**

Children arriving after 8.50am will need to use the main entrance. Children who enter school via the main entrance will be registered as late. Regularly missing the beginning of lessons has a negative impact on a child's progress and wellbeing.

FAMILY WORSHIP

On **Friday 27 June at 9.00am**, EYP will lead their Family Worship in the hall. Please wait at the back of school by the hall door ready to be let in.



Y5/6 LAKE DISTRICT PARENT BRIEFING

Thank you to all the parents and carers who attended our recent Lake District residential briefing. It was wonderful to see so many of you there, and we appreciate your continued support as we prepare for this exciting opportunity for our children.

The information shared during the meeting, including key details about departure and return times, kit lists, and planned activities, will be emailed out shortly for your reference.

If you have any further questions or would like to discuss anything in more detail, please don't hesitate to speak to your child's class teacher.

Kind regards,

2025/26 TERM DATES

	Open On	Close On
Autumn 2025	Wednesday 3 September 2025	Friday 24 October 2025
	Monday 3 November 2025	Friday 19 December 2025
Spring 2026	Monday 5 January 2026	Friday 13 February 2026
	Monday 23 February 2026	Friday 27 March 2026
Summer 2026	Monday 13 April 2026	Thursday 21 May 2026
	Monday 1 June 2026	Friday 17 July 2026

Easter Bank Holidays:

Good Friday: 3 April 2026

Easter Monday: 6 April

Bank Holidays during term time:

Monday 4 May 2026

Inset Days:

1 September 2025

2 September 2025

21 November 2025

22 May 2026

20 July 2026

ASSESSMENT WEEK

We would like to inform you that the week commencing **16 June** will be Assessment Week for the entire school, with the exception of Year 6. To ensure that your child is well-prepared and can perform to the best of their abilities, we recommend the following:

- **Limit Screen Time:** Please encourage your child to be off devices at least **1 hour** before bedtime to help them unwind and prepare for a good night's sleep.
- **Fresh Air:** Ensure your child gets plenty of fresh air and outdoor activity during the day to help them stay energised and focused.
- **Rest Well:** A good night's sleep is crucial for optimal performance, so please ensure your child goes to bed at a reasonable time throughout the week.

Thank you for your support in helping your child succeed during this important week!

**A SPOTLIGHT ON:
SUPER LEADERS**



Our Super Leaders initiative gives pupils the qualities they need to flourish in society by teaching them to be responsible, respectful and active citizens in public life. It is instrumental to our character education offer. Every year, each Y2-Y6 child is a member of two advocacy teams which campaign for change. By the time a child leaves our school, they have been a member of every Super Leader team. The intent behind our Super Leaders initiative is to provide children with an opportunity to make a difference to our school, local or global community. Past projects/ campaigns have included: Rights Respecting Parliament developed a child-friendly safeguarding policy and film, Health and Safety Team promoted Road Safety, Charity Champions led on charity work to make up food hampers for local families and Food Bank, the Town Troopers have written a letter to residential about the future development of our school grounds, our Global Ambassadors made environmentally friendly reindeer food and our Equality Advocates designed a logo which is displayed in all classrooms and which celebrates equality and inclusion.

Class	Super Leader Team 1	Super Leader Team 2
Y2	Arts Council	Wellbeing Warriors
Y3	Digital Leaders	Health and Safety Crew
Y4	Values Ambassadors	Town Troopers
Y5	Charity Champions	Equality Advocates
Y6	Global Change Ambassadors	Entrepreneurs
Miss Foster	Rights Respecting Parliament	
Mr Ward	Sports Leaders	

You can read about each Super Leader Team on our website.
<https://www.rainhillstanns.co.uk/page/?title=Super+Leaders&pid=72>





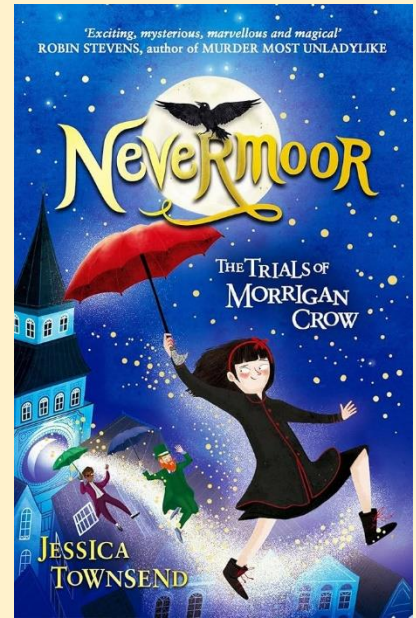
RECOMMENDED READS

Nevermoor
By Jessica Townsend

Recommended for 8-11 year olds

This story is about a girl who thinks she is unlucky and doesn't belong anywhere. But one day, an eccentric stranger whisks her away to a magical city where she gets a chance to change her future. She has to complete exciting challenges to prove she belongs there. Full of adventure, fun, and friendship, this book is perfect for anyone who loves magic and mystery!

Happy reading! Mr Harrison 😊



EARLY YEARS DROP INS

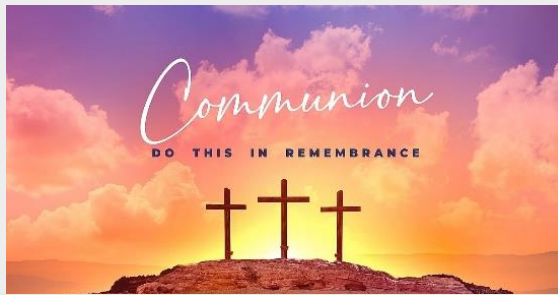


We've loved welcoming our new starters and their families to our recent drop-in sessions! It's been wonderful to see the children exploring the setting, getting to know their new environment, and beginning to build those first friendships. There's one more session to come on Wednesday 4th June – we look forward to seeing everyone again for more fun and familiarisation!

YEAR 6 LEAVERS SERVICE AT THE ANGLICAN CATHEDRAL



On Monday 9th June, the Y6 cohort will be attending the School Leavers Service at the Liverpool Anglican Cathedral. This is a very special occasion and something that children in previous years have always enjoyed. The service invites primary schools from all across the Diocese of Liverpool to celebrate the children's time at their respective schools. This event is raising funds for Christian Aid. If your child would like to bring a monetary donation, there will be an opportunity for them to bring the offertory forward. The cathedral have asked that any cheques are made payable to L.D.B.F. which enables the, to send one big donation from all children/schools to Christian Aid. We are certain that this will be an enjoyable event to commemorate the children's time at St Ann's under the Diocese.



COMMUNION

Y6 will attend the Communion Community Service at Church on **Thursday 12 June @ 9.30am.**

Everyone welcome!

YEAR 2 VISIT TO THE PHILHARMONIC



As part of our Curriculum and Cultural Offer the children in Year 2 will visit the Liverpool Philharmonic to watch and take part in Schools' Concerts 2025 on Thursday 19th June 2025. The coach will leave school at 12:30pm and will return for approximately 3:20pm. The children will need to wear their school uniform (no PE kits) and will also need to bring a disposable bottle of water (plastic), with their name clearly displayed. As the children will be in school for lunch, the usual lunchtime routines will apply. We cannot wait to spend an afternoon surrounded by musical talent - the children will be so inspired by this experience!



CLASS PHOTOGRAPH DAY

We are excited to remind you that our annual class photograph day is scheduled for **Friday, 20 June.** On this special day, we ask that all children wear their full winter school uniform.

Rationale for Winter Uniform: Wearing the winter uniform not only ensures that our children look smart and presentable, but it also enhances the overall appearance of our school community in the photographs. A cohesive and polished look contributes to a positive image of our school, reflecting the pride we take in our students and their achievements.

In the event that the weather is unusually warm, we will promptly send out a message requesting that children wear their summer uniform instead.

For those children who typically have PE on Fridays, please remember to send their PE kit in a named carrier bag so they can participate comfortably after the photographs are taken.

Thank you for your cooperation and support in making this day a memorable one for our children!

OWN CLOTHES DAY

On **Friday 13 June** we are holding an own clothes day for a voluntary contribution of £2.00. Please pay the voluntary donation via Arbor.

SAFEGUARDING TOP TIP #29



Transition

Young people go through all kinds of changes as they grow up, including when they move into a new class, go to secondary school, move to a new house or area, or experience changes within their family. These times of transition can be exciting. However, they can also be stressful, worrying or upsetting.

Change can be difficult when a young person does not want it to happen or does not feel ready for it, feels worried about something new or unknown, needs time to let go of something that has ended or feels that what is happening to them is out of their control. A child or young person may also find change difficult if they are already struggling with other things.

Signs your child may be struggling with change

Look out for a change in things like sleeping or eating habits.

Communicate with your child if you've seen these signs.

Keep going, even if it feels like you're not getting through to them.

Contact your GP or school about the warning signs if things don't improve.

What to do if your child is finding change difficult

Be part of the solution

As a parent, be part of the solution. There are a number of things you can do to support your child, whether that be helping them plan, problem-solve, or develop a sense of hope for the future.

Get interested in what your child is doing.

Open up conversations about what they're involved in.

Keep an eye on pressure points.

Looking after yourself as a parent

It's important you look after yourself so you can best look after your child.

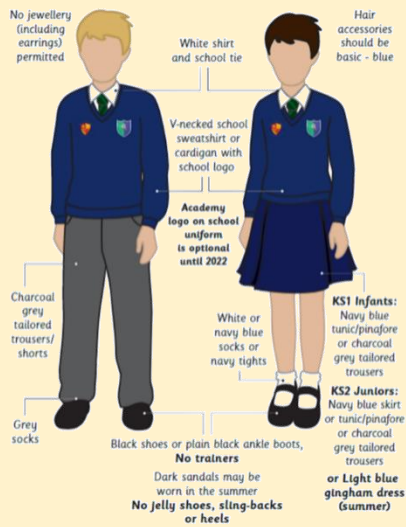
Recognise when you're finding things hard.

Talk to family and friends about how things are.

Recharge your batteries and relax.

WEEKLY REMINDERS

SCHOOL UNIFORM REMINDERS



**Please note, it is not compulsory to wear items of clothing with the school and Trust logos on. Children may wear plain navy-blue items of school uniform.*

SCHOOL SHOES REMINDER



INDIVIDUAL HEALTH CARE PLANS

If you have notified school that your child has a medical condition that requires an Individual Health Care Plan please ensure that if there are any changes to their condition a new form is completed.

If your child has a newly diagnosed condition that requires an Individual Health Care Plan please contact the school office to arrange for a form to be completed.

TOAST

The deadline for toast for this half term has now passed. Details of Toast payments for the next academic year will be advised in due course.

CONTACT DETAILS, CONSENT & PERMISSIONS

On a regular basis please check your contact details, consent and permissions on Arbor to make sure they are up to date for your child. Thank you

MELLOR'S SCHOOL MEAL MENU

For a copy of Mellor's most up to date school meals menu, please check out our website by clicking on the following link: <https://www.rainhillstanns.co.uk/page/?title=School+Dinner+Menu&pid=46>

Please note, the menu is subject to change where there is a shortage of supplies.

TERM DATES 2024-25

Term	Open on	Close on
Autumn Term 2024	4 th September 2024	25 th October 2024
	4 th November 2024	20 th December 2024
Spring Term 2025	6 th January 2025	14 th February 2025
	24 th February 2025	4 th April 2025
Summer Term 2025	22 nd April 2025	23 rd May 2025
	4 th June 2025	22 nd July 2025

PURCHASING SCHOOL ITEMS

If you wish to purchase a school item this can now be done through Arbor. If you make a purchase please email the school office at stannsce@three-saints.org.uk so that arrangements can be made to issue the item. Current prices are as follows:

School Bag £10.00

Junior Tie £4.00

Elasticated Tie £3.50

Children's University Passport £5.00

Replacement Home School Diary £5.00

Courtesy

Care

Concentration



St. Ann's Church of England Primary School

View Road, Rainhill, Merseyside, L35 0LQ

Tele: 0151 426 5869

Website: <http://www.rainhillstanns.co.uk>

Email: stannsce@three-saints.org.uk

Twitter: [@RainhillStAnns](https://twitter.com/RainhillStAnns)

Headteacher: Mrs Laura Rynn

'But those who trust in the Lord, they will find new strength.

They will soar high on wings like eagles' Isaiah 40:31

Parents' Suggestion/Comment Slip

DATES FOR DIARY APRIL-JULY 2025

DAY	DATE	EVENT
Monday – Friday	9 th – 13 th June 2025	Year 1 Phonics Screening Check Week
Monday	9 th June 2025	Y6 Leavers Service @ the Anglican Cathedral <i>Parents/ carers welcome to attend, but need to make their own way there.</i>
Thursday	12 th June 2025	Y6 Communion 9.30am @ Church <i>Everyone welcome</i>
Friday	13 th June 2025	Own Clothes Day
Thursday	19 th June 2025	Y2 Trip to Liverpool Philharmonic Hall
Friday	20 th June 2025	Class Photographs <i>All children to wear correct school uniform</i>
Friday	27 th June 2025	EYP Family Worship 9.00am
Monday -Tuesday	30 th June-1 st July 2025	Y6 RHS Transition Days
Thursday	3 rd July 2025	Choir Lost in Music event, Town Hall
Friday	4 th July 2025	EYM Family Worship 9.00am
Wednesday -Friday	9 th -11 th July 2025	Y5 and Y6 Lake District Residential
Friday	11 th July 2025	EY's Trip to Knowsley Safari Park
Friday	18 th July 2025	Children's University Passport Bank Children's University Graduation 11am @ Church. <i>Parents of children graduating and choir welcome to attend.</i>
Monday	21 st July 2025	Awards Evening @ Church Year 6 – 6.00pm EYFS - Year 5 – 7.00pm <i>The church carpark will be closed to St Ann's due to event at Millennium Centre on the same evening.</i>
Monday	21 st July 2025	Year 6 Leavers' Disco 7.00-8.00pm
Tuesday	22 nd July 2025	Year 6 Leavers' Service 9.00am <i>Y6 Parents/ Carers welcome</i> Y6 to bring shirt to school to have signed
Tuesday	22nd July 2025	School Closes

FREE

REGISTERED CHARITY : 517144

YMCA ST HELENS

Family Hub activities



Family Matters
(For families with children aged 5-11)

What is it?

It is a safe space for children to have fun, play games, do arts/crafts, and make new friends.



AND



It is a chance for parents to relax, take a moment and chat with other parents or the youth work staff.

Sutton Family Hub
(26 Ellamsbrige Rd, WA9 3PY)
Wednesdays 3:30-5pm

Newton Family Hub
(Patterson Street
Newton-le-Willows, WA12 9PZ)
Thursdays 3:30-5pm



**NO NEED TO BOOK
JUST DROP IN**

FOR MORE INFO
EMAIL
youthwork@ymcasthelens.org.uk



Youth Group
For youth aged 10-14
(school years 6-9)

What is it?
Games, activities, arts and crafts
(program shaped by you)

Sutton Family Hub
(26 Ellamsbrige Rd, WA9 3PY)
Tuesdays 4:30-6pm



BSL Interpreters are available on request
To get in touch with us please contact:

 childrenscentres@sthelens.gov.uk
 01744 673420



YMCA

Here for young people
Here for communities
Here for you

YMCA enables people to develop their full potential in mind, body and spirit. Inspired by, and faithful to, our Christian values, we create supportive, inclusive and energising communities, where young people can truly belong, contribute and thrive.

FAMILY & YOUTH WORK

HEALTH & WELLBEING

HOUSING

TRAINING & EDUCATION

SUPPORT & ADVICE

Carers Information Day

Thursday 12th June 2025, 10am - 4pm

St.Helens Town Hall, Victoria Square, WA10 1HP

A chance for Carers to meet local services

- ✓ Social Care
- ✓ Mental Health and Physical Wellbeing
- ✓ Parent Carer Support
- ✓ Community Services

Including: Carers Centre Support Team & Benefits Advisors, Adult Community Learning, Adult Safeguarding Team, Advanced Solutions, Advocacy Focus, Affordable Warmth, AGE UK, Alzheimers Society, Andys Mans Club, Change Grow Live, Come Together Hub, Contact Cares - St Helens Social Services, Deafness Resource Centre, Handyperson Scheme, Health Watch, Home Improvement Agency, Homestart, Later Life Team - St Helens Council Social Care, Library Outreach Service, Listen 4 Change - Parent Participation Forum, Macmillan Cancer Information & Support Service, MerseyCare - Primary Care Mental Health Team, MerseyCare Engagement Team, Smoke Free - St Helens Wellbeing, Social Prescribers, St Helens Law, Stroke Association, Talking Therapies, Torus Wellbeing, Transition Team Social Care/Children with Disabilities Team, VCA - Health Champion & Many More!



CARERS TRUST

St Helens Carers Centre

www.sthelenscarers.info 01744 675615

St Helens Carers Centre is a registered charity in England and Wales (no. 1031652) registered as a company limited by guarantee in England & Wales no. 020219 registered office: 31-35 Baldwin Street, St Helens, WA10 2BT