



# St Ann's Church of England Primary School



*Together, we aim high; with God's love, we can fly!*

Value of the Half Term

*Friendship*

Newsletter Issue 30

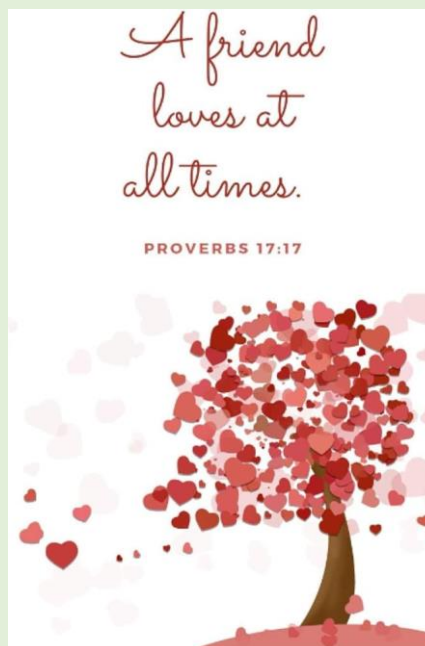
Friday 9 May 2025

My commandment is this: love one another, just as I love you.

John 15:12

## CONTENTS

1. Special School Meal Menu
2. Reception places at St Ann's
3. Y4 Multiplication Tables Check
4. Y1 Phonics Check
5. 2025/26 Term dates
6. Summer Fizz Year Group Music Concerts
7. A Spotlight on: Spiritual, Moral, Social &
8. Sports Days
9. Parent Forum
10. Family Worship
11. Recommended Reads
12. Communion
13. E Safety Parent Information Sessions
14. Safeguarding Top Tip #26
15. General Information/Reminders



## SPECIAL SCHOOL MEAL MENU: BUILD A BURGER!

We're excited to announce a special school meal day on **Thursday, 15 May**, featuring our "Build a Burger" menu! Our meals are crafted with high-quality ingredients, ensuring that your child enjoys nutritious and tasty options every day. On this special day, children can customise their burgers with a choice of cheese, gherkin, and tomato sauce, served with delicious wedge potatoes, beans, peas, sweetcorn, or a fresh salad. For our vegetarian friends, a vegetable burger option will also be available. To top it off, students can choose from a delightful selection of desserts, including ice cream, cookies, yoghurt, or fresh fruit.

Don't miss out on this fantastic opportunity for your child to enjoy a hearty meal! Payments can be made conveniently via Arbor by Monday 12<sup>th</sup> May for £2.32. If your child is entitled to Free School Meals they are welcome to take part and no charge will be made.

**Let's make lunchtime a delicious and enjoyable experience!**

KIDS GET THEIR SUPER POWERS BY  
**ATTENDING SCHOOL  
 EVERY DAY** ⚡

BE AN ATTENDANCE  
**SUPERHERO!**

Whole school attendance year to date <i>Whole School target 96%</i>	96.64%
Whole school attendance week ending 2 <sup>nd</sup> May 2025	96.93%
Class with best weekly attendance	100%

#### Attendance Expectations

Children are expected to be in school **every day** unless they are unwell. All other reasons will be unauthorised. If your child is going to be absent, contact school and let us know before 9.25am. Children not in school may receive a phone call home or home visit. In line with our Attendance Policy, we are committed to supporting families in improving their child's attendance, before taking legal action.

## #EveryMomentMatters



**Number of pupils  
with 100% attendance  
this week**

**381**

#### Punctuality

School gates open at **8.40am**  
 School gates close at **8.50am**  
 School starts at **8.55am**

Children arriving after 8.50am will need to use the main entrance. Children who enter school via the main entrance will be registered as late. Regularly missing the beginning of lessons has a negative impact on a child's progress and wellbeing.

## EXCITING OPPORTUNITY FOR RECEPTION PLACES AT ST ANN'S CE PRIMARY SCHOOL!



We are thrilled to announce that our Early Years setting has recently been rated **Outstanding** by Ofsted! This recognition reflects our commitment to providing high-quality education and care for our children.

Currently, we have a **limited number of Reception places available** for the 2025-26 academic year due to the low birth rate in St Helens. If you are seeking a Reception place for your child, or know someone who is, we invite you to reach out to us. We would be delighted to welcome new children to our St Ann's family!

This is a unique opportunity, as our school is usually at full capacity with a waiting list.

Please help us spread the word among your family and friends to ensure we connect with families who could benefit from this opportunity. Thank you for your support!

What Ofsted said our school:

- *Pupils love being in school.*
- *Children in Reception Year quickly absorb the routines and rules that help them to learn well in school. From the minute children enter the Reception classes they are taught the 'St Ann's Way.'*
- *Reading is central to the curriculum. This begins in Reception classes, where children develop a love of stories.*

To read our Ofsted report in full, click on the following link:

<https://reports.ofsted.gov.uk/provider/21/142154>

## YEAR 4 MULTIPLICATION TABLES CHECK

Immediately following our half term holiday, all Y4 pupils will take part in the statutory times table check. The Multiplication Tables Check will be administered over a **two week period** starting on **w/c Monday 2 June 2025**.

Children will be tested using an on-screen check (on a computer or a tablet), where they will have to answer multiplication questions against the clock.

The test will last no longer than 5 minutes. Answers will be marked instantly. Children will have 6 seconds to answer each question in a series of 25. Each question will be worth one mark and be presented to the child in this format:

$n1 \times n2 = \underline{\quad}$

Questions will be selected from the 121 number facts that make up the multiplication tables from 2 to 12, with a particular focus on the 6, 7, 8, 9 and 12 times tables as they are considered to be the most challenging. Each question will only appear once in any 25-question series, and children won't be asked to answer reversals of a question as part of the check (so if they've already answered  $3 \times 4$  they won't be asked about  $4 \times 3$ ).

Once the child has inputted their answer on the computer / device they are using, there will be a three-second pause before the next question appears. Children will be given the opportunity to practise answering questions in this format before the official check begins.

The six-second time limit per question has been decided on by the DfE because it should allow children enough time to demonstrate their recall of times tables without giving them the time to work out the answers to each question.

**Helping your child to prepare is easy! Simply ensure they access TTRockstars daily – we would recommend children play 3 games each day.**

[Watch as their score rapidly improves.](#)

## YEAR 1 PHONICS CHECK

School will administer the Phonics Screening Check the week beginning **Monday 9 June 2025** to all Y1 pupils and to Y2 pupils who failed the check in December.

The Phonics Screening Check shows how well your child can use the phonics skills they've learned, and to identify children who need extra phonics help.

The checks consist of **40 words and non-words** that your child will be asked to read one-on-one with a teacher. Non-words (or nonsense words, or pseudo words) are a collection of letters that will follow phonics rules your child has been taught, but don't mean anything – your child will need to read these with the correct sounds to show that they understand the phonics rules behind them.

You can download the Department for Education's official [Year 1 Phonics screening check past paper from 2012, 2013, 2014, 2015, 2016, 2017, 2018, 2019, 2022, 2023 & 2024](#) to get an idea of what your child will be asked to do.

Your child will be scored against a national standard, and the main result will be whether or not they fall below, within or above this standard.

You can help your child prepare for their Phonics Screening Check by going over the phonics they've learned in Reception and Year 1. Read new books and stories with them where they will be introduced to new words that they'll have to sound out, and [review the phonics sounds and rules](#).

[As always, if you have any questions regarding the check, simply speak to your child's class teacher.](#)

## 2025/26 TERM DATES

	Open On	Close On
<b>Autumn 2025</b>	Wednesday 3 September 2025	Friday 24 October 2025
	Monday 3 November 2025	Friday 19 December 2025
<b>Spring 2026</b>	Monday 5 January 2026	Friday 13 February 2026
	Monday 23 February 2026	Friday 27 March 2026
<b>Summer 2026</b>	Monday 13 April 2026	Thursday 21 May 2026
	Monday 1 June 2026	Friday 17 July 2026

### **Easter Bank Holidays:**

Good Friday: 3 April 2026

Easter Monday: 6 April

### **Bank Holidays during term time:**

Monday 4 May 2026

### **Inset Days:**

1 September 2025

2 September 2025

21 November 2025

22 May 2026

20 July 2026

## SUMMER FIZZ YEAR GROUP MUSIC CONCERTS



We are thrilled to celebrate the success of our first ever Summer Fizz music concerts! The atmosphere was electric as every year group took to the stage, showcasing their incredible musical talents. From joyful singing to confident instrument playing, the children performed with such enthusiasm and pride, delighting the audience with their energy and teamwork. The concerts truly sparkled with creativity and joy, making them a highlight of our school year so far.

The concerts also gave several children the special opportunity to perform as soloists, allowing them to truly shine and showcase their individual talents. These moments were incredibly moving, as pupils stepped forward with courage and poise to share their voices and musical skills. Performing solo in front of an audience is no small feat, and it was wonderful to see the children rise to the occasion with such confidence and pride. These experiences will no doubt stay with them, helping to build their self-belief and encouraging them to embrace new challenges in the future.

It was a real celebration of our school's musical spirit, with each class contributing something special to the event. The children's confidence and commitment shone through in every note and lyric. Whether they were striking the right notes on their instruments or singing with passion and joy, every pupil contributed to making the concerts an unforgettable celebration of music and teamwork. We are so proud of everyone involved and can't wait to build on this fantastic achievement in the years to come!

## A SPOTLIGHT ON: SPIRITUAL, MORAL, SOCIAL & CULTURAL EDUCATION



### Spiritual Development

- Personal Beliefs and Values: Encourage children to explore and develop their own beliefs, values, and faiths while fostering an attitude of respect and tolerance towards the beliefs of others.
- Holistic Well-being: Promote the development of a healthy mind and body, focusing on the whole person and their beliefs, while nurturing an awareness of their own needs and those of others.
- Religious Awareness: Support children in understanding various beliefs and religious faiths, enhancing their awareness of different choices and acceptance of others' beliefs.

### Moral Development

- Understanding Right and Wrong: Help children recognise the difference between right and wrong, emphasising honesty and truth in decision-making.
- Respect for All: Instil an understanding of equal respect for all living things, fostering a sense of responsibility for their actions and words.
- Positive Relationships: Enable children to reflect on the importance of caring, positive relationships, encouraging them to take responsibility for their interactions with others.

### Social Development

- Interpersonal Skills: Teach children how to interact effectively with others, promoting acceptance and understanding within various social contexts.
- Behavioural Expectations: Help children understand acceptable behaviour and societal rules, preparing them for participation in diverse groups, communities, and the wider society.
- Conflict Resolution: Provide opportunities for children to develop problem-solving skills, encouraging them to find constructive solutions to conflicts and challenges.

### Cultural Development

- Cultural Awareness: Foster an understanding and respect for the beliefs and values of people from diverse backgrounds, celebrating both differences and similarities.
- Global Perspective: Encourage knowledge of the wider world, exposing children to a multitude of choices and experiences that reflect various cultures.
- Experiential Learning: Organise visits to cultural institutions such as theatres, ballet performances, operas, and museums to enrich children's understanding of cultural diversity and appreciation.

### Implementation Strategies

- To effectively enhance SMSC development the following strategies are implemented:
- Curriculum Integration: SMSC objectives embedded across all subjects, ensuring that lessons promote discussions around beliefs, values, and ethical dilemmas.
- Extra-Curricular Activities: A range of clubs and activities that celebrate cultural diversity are offered and organised.
- Parental Involvement: We engage parents in discussions and activities related to SMSC, fostering a community-wide approach to developing these values.
- Staff Training: We provide professional development opportunities for staff to enhance their understanding of SMSC and how to effectively promote it within the classroom.
- Reflection and Assessment: Children take part in reflection sessions to discuss their experiences and growth in SMSC areas.



## SPORTS DAYS

Please find detailed below the dates and time for this year's Sports Days (weather permitting). If sports days need to be cancelled due to inclement weather, we will send out a message as soon as possible.

YEAR GROUP	DATE	TIME	RESERVE DAY
EYs	Tuesday 20 May	1.30-3.00pm	Friday 23 May
Y1	Tuesday 20 May	9.15-10.15am	Thursday 22 May
Y2	Tuesday 20 May	10.30-11.30am	Thursday 22 May
Y3	Wednesday 21 May	9.15-10.15am	Friday 23 May
Y4	Wednesday 21 May	10.30-11.30am	Friday 23 May
Y5	Wednesday 21 May	1.00-2.00pm	Thursday 22 May
Y6	Wednesday 21 May	2.00-3.00pm	Thursday 22 May

### PARENT FORUM



The next Parent Forum session for their year's class reps will take place on **Friday 16 May at 2.00pm**. Please

Speak with your class representative if you would like to have anything raised at the meeting. We look forward to seeing our reps soon.

### FAMILY WORSHIP

Well done to 1T on a fabulous Family Worship all about Earth Day.

On **Friday 27 June at 9.00am**, EYP will lead their Family Worship in the hall. Please wait at the back of school by the hall door ready to be let in.

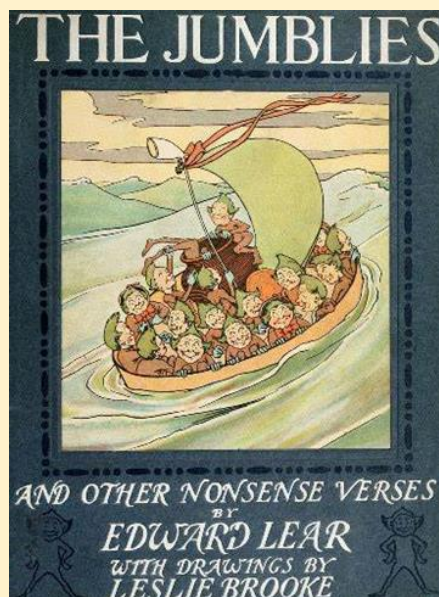


### RECOMMENDED READS

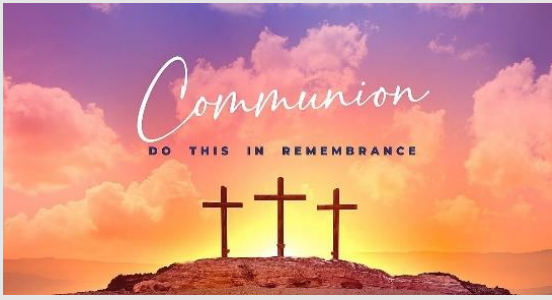
**The Jumblies**  
By Edward Lear

Recommended for 5-10 year olds

I love this book because it's full of poems that my dad used to read to me when I was little. They're full of funny-looking creatures in nonsense stories and the poems have a good rhythm - almost like a song - so everyone can join in. The Jumblies is definitely my favourite but the Pobble Who Has No Toes and The Duck and the Kangaroo are at the top of my list too!



Happy reading! Miss Marland 😊



## COMMUNION

Y5 will attend the Communion Community Service at Church on **Thursday 22 May @ 9.30am.**

Everyone welcome!

School closes for half term on **Friday 23 May 2025.**

School re-opens after half term on **Wednesday 4 June 2025.**

## E-SAFETY PARENT INFORMATION SESSION



Thank you to all parents who attended the recent online Information session on E-Safety. Here is a link to the recording and presentation:

<https://drive.google.com/drive/folders/162KFb51uZEYDWMSWAcQBGEDoDQZ5F9IU?usp=sharing>

You can also access by clicking on the following link:

<https://www.knowsleyclcs.org.uk/online-safety-parent-session-may-2025/>

## SAFEGUARDING TOP TIP #26



### Dealing with body confidence-CHILDLINE

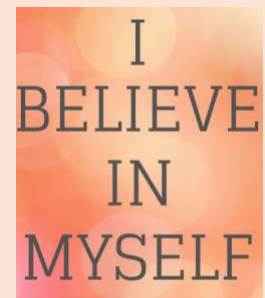
The world is now more superficial than ever before – tiktok, Instagram, snapchat and others have changed what the world expects people to look like. For young people, the standard idea of beauty has always been an immense pressure for those transitioning between being a child and being a young person.

#### FIVE things to help you feel better

- Everyone's different so don't compare yourself to other people.
- Ignore any negative or mean comments from other people.
- Write down 3 things you like about yourself and read it every morning.
- Share your thoughts with your friends and ask them what they like.
- Focus on hobbies you enjoy or things you are good at - this can help build your confidence.

ChildLine has created a page with advice on these issues.:

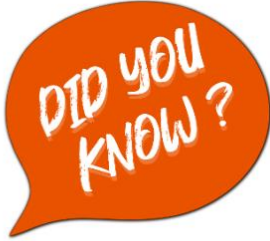
<https://www.childline.org.uk/info-advice/you-your-body/my-body/how-you-look/>





## PEGI helps parents to make informed decisions when buying video games:

- The age rating confirms that the game content is appropriate for players of certain age
- It considers the age **suitability** of a game, **not the level of difficulty**



### TWO LEVELS OF INFORMATION AS A GUIDE : THE PEGI AGE LABELS



### THE CONTENT DESCRIPTORS



[pegi.info](http://www.pegi.info)



Visit [parentsafe.lgfl.net/](http://parentsafe.lgfl.net/) for advice and tips to manage screentime

## SCREENTIME

Lots of parents worry about it, but we don't think you should worry about screentime - it's not **how long** they are online but **what and when they are doing** that counts (and the same goes for grown-ups, like in the Will Ferrell video above). You can use the control settings near the top of this page to regulate screen time in general and on specific apps, but beyond that we recommend you follow the Children's Commissioner's 'Digital 5 A Day' and help your children to aim for each of the targets in this pie chart ↗

Children's  
COMMISSIONER



Digital 5 A Day  
Simple steps to a balanced digital diet and better wellbeing

The UK Chief Medical Officers agree - check out [their version of what counts](#).

**UK Chief Medical Officers' advice for parents and carers on Children and Young People's screen and social media use**

Technology can be a wonderful thing but too much time sitting down or using mobile devices can get in the way of important, healthy activities. Here are some tips for introducing screen use with healthy living.

<p><b>Sleep matters</b></p> <p>Getting through school usually starts a tiring day. Make sure you and your children get enough sleep. Get advice on how to get a good night's sleep.</p>	<p><b>Sharing sensibly</b></p> <p>Be careful sharing photos and information online and on mobile devices. Don't share anything that could be embarrassing or that could be used to identify you or your family. Think about who you're sharing it with and how it might be used.</p>
<p><b>Education matters</b></p> <p>Make sure you and your children get enough sleep. Get advice on how to get a good night's sleep.</p>	<p><b>Keep moving!</b></p> <p>Everyone should take a break after a couple of hours sitting or lying down using a screen. It's good to get up and move about a lot. #letsmoveonline</p>
<p><b>Safety when out and about</b></p> <p>Always remember to get your consent when you're out and about. Don't share anything that could be embarrassing or that could be used to identify you or your family. Think about who you're sharing it with and how it might be used.</p>	<p><b>Talking helps</b></p> <p>Talk with children about using screens and what they are doing. A change in behaviour can be a sign they are distressed - make sure there's always an adult nearby when they're using screens. Encourage them to talk about their feelings and needs.</p>
<p><b>Family time together</b></p> <p>Screen-free meal times are a good idea - and can help build a strong relationship with children, giving them full attention to children.</p>	<p><b>Use helpful phone features</b></p> <p>Some devices and platforms have special features to help. These features can help track and manage screen time. Use them to help you and your children manage their screen time and to help you understand their needs.</p>



# st helens heritage festival



**Save the Date!**  
**Saturday 31 May 2025**  
**St Helens town centre**

Free family friendly event:  
all are welcome to  
celebrate and share the  
rich and varied heritage  
of St Helens Borough



St Helens  
Archive Service

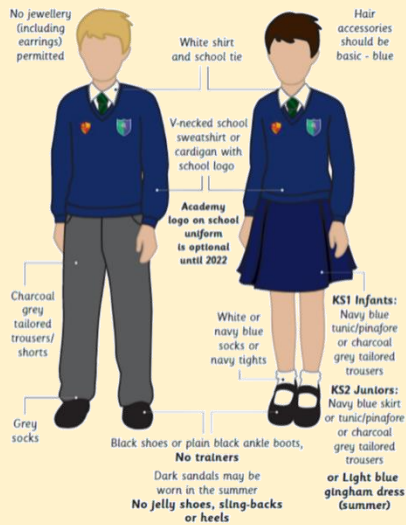


Heritage  
Fund

ST HELENS  
BOROUGH COUNCIL

## GENERAL INFORMATION/REMINDERS

### SCHOOL UNIFORM REMINDERS



*\*Please note, it is not compulsory to wear items of clothing with the school and Trust logos on. Children may wear plain navy-blue items of school uniform.*

### SCHOOL SHOES REMINDER



### INDIVIDUAL HEALTH CARE PLANS

If you have notified school that your child has a medical condition that requires an Individual Health Care Plan please ensure that if there are any changes to their condition a new form is completed.

If your child has a newly diagnosed condition that requires an Individual Health Care Plan please contact the school office to arrange for a form to be completed.

### TOAST

The deadline for toast for this half term has now passed. Please see the flyer attached to this newsletter for details of the payments required for future half terms.

### CONTACT DETAILS, CONSENT & PERMISSIONS

On a regular basis please check your contact details, consent and permissions on Arbor to make sure they are up to date for your child. Thank you

### MELLOR'S SCHOOL MEAL MENU

For a copy of Mellor's most up to date school meals menu, please check out our website by clicking on the following link: <https://www.rainhillstanns.co.uk/page/?title=School+Dinner+Menu&pid=46>

*Please note, the menu is subject to change where there is a shortage of supplies.*

## TERM DATES 2024-25

Term	Open on	Close on
Autumn Term 2024	4 <sup>th</sup> September 2024	25 <sup>th</sup> October 2024
	4 <sup>th</sup> November 2024	20 <sup>th</sup> December 2024
Spring Term 2025	6 <sup>th</sup> January 2025	14 <sup>th</sup> February 2025
	24 <sup>th</sup> February 2025	4 <sup>th</sup> April 2025
Summer Term 2025	22 <sup>nd</sup> April 2025	23 <sup>rd</sup> May 2025
	4 <sup>th</sup> June 2025	22 <sup>nd</sup> July 2025

## PURCHASING SCHOOL ITEMS

If you wish to purchase a school item this can now be done through Arbor. If you make a purchase please email the school office at [stannsce@three-saints.org.uk](mailto:stannsce@three-saints.org.uk) so that arrangements can be made to issue the item. Current prices are as follows:

**School Bag £10.00**  
**Junior Tie £4.00**  
**Elasticated Tie £3.50**  
**Children's University Passport £5.00**  
**Replacement Home School Diary £5.00**

**Courtesy**

**Care**

**Concentration**



**St. Ann's Church of England Primary School**

View Road, Rainhill, Merseyside, L35 0LQ

Tele: 0151 426 5869

Website: <http://www.rainhillstanns.co.uk>

Email: [stannsce@three-saints.org.uk](mailto:stannsce@three-saints.org.uk)

Twitter: [@RainhillStAnns](https://twitter.com/RainhillStAnns)

Headteacher: Mrs Laura Rynn

*'But those who trust in the Lord, they will find new strength.*

*They will soar high on wings like eagles' Isaiah 40:31*

**Parents' Suggestion/Comment Slip**

# JOIN OUR TEAM FFC BARCA



**GIRLS U9S (25/26)**

CURRENT Y3

HIGHTOWN SUNDAY LEAGUE

**5-6PM** TUESDAY  
TRAINING

RAINHILL BASED

MORE INFO: 07479953465 / @FOOTYFACTORYCOACHING

# TOAST

If you would like your child to have Toast every half term please see below for the amount due each half term and the date the amount is required by. Payments should be made to your Arbor Toast account. Payments can be made in advance of these dates if you wish and the credit will be used once the due date arrives.

	Amount Due	Date Toast Account to be in credit by
Autumn 1	£9.50	Midday 16th July 2024
Autumn 2	£8.50	Midday 15th October 2024
Spring 1	£7.50	Midday 17th December 2024
Spring 2	£7.50	Midday 7th February 2025
Summer 1	£6.00	Midday 26th March 2025
Summer 2	£8.75	Midday 20th May 2025

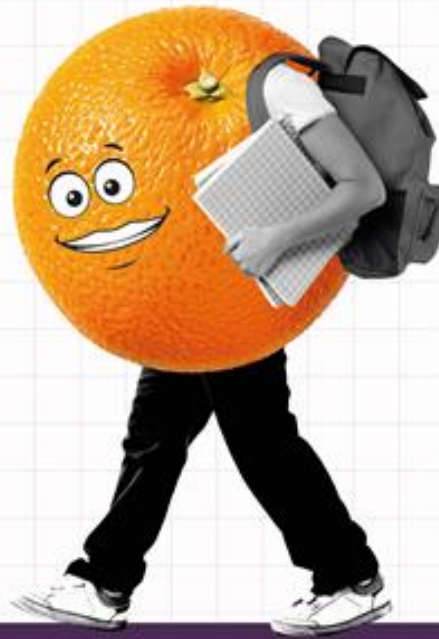
Total for year £47.75



# CENSUS DAY

Dine with us...

Thursday 15th May



## Main

### **Build a Burger**

#### **Choice of**

Cheese, gherkin, tomato sauce

Served with wedge potatoes, beans, peas, sweetcorn or salad

Vegetable burger

Served with wedges, beans, peas and sweetcorn or salad

## **Dessert**

### **Choice of**

Ice cream or

Cookie or

Yoghurt or

Fresh fruit

**DATED FOR DIARY APRIL-JULY 2025**

<b>DAY</b>	<b>DATE</b>	<b>EVENT</b>
Monday -Thursday	12-15 <sup>th</sup> May 2025	KS2 SATS
Friday	16 <sup>th</sup> May 2025	Y6 Fun Day
Monday	19 <sup>th</sup> May 2025	Mark Barrow Run 9.00 -11.30am Parents/ carers not invited to this event <i>All year groups to wear PE kit to school today</i>
Tuesday	20 <sup>th</sup> May 2025	Sports Day Y1 - 9.15-10.15am Y2 - 10.30-11.30am EY's - 1.30- 2.30pm <i>Children to wear PE kit school on their year group sports day</i>
Tuesday	20 <sup>th</sup> May 2025	Y1 & Y2 RHSE Parent Workshop 5.00pm
Wednesday	21 <sup>st</sup> May 2025	Sports Day Y3 - 9.15-10.15am Y4 - 10.30-11.30am Y5 – 1.00-2.00pm Y6 – 2.15-3.15pm <i>Children to wear PE kit school on their year group sports day</i>
Wednesday	21 <sup>st</sup> May 2025	Y3 & Y4 RHSE Parent Workshop 5.00pm
Thursday	22 <sup>nd</sup> May 2025	Y5 Communion 9.30am @ Church
Thursday	22 <sup>nd</sup> May 2025	Reserve Sports Day Y1 – 9.15-10.15am Y2 – 10.30-11.30am Y5 – 1.00-2.00pm Y6 – 2.15-3.15pm <i>Children to wear PE kit school on their year group sports day</i>
Thursday	22 <sup>nd</sup> May 2025	Y5 & Y6 RHSE Parent Workshop 5.00pm
Friday	23 <sup>rd</sup> May 2025	Children's University Passport Bank
Friday	23 <sup>rd</sup> May 2025	Reserve Sports Day Y3 – 9.15-10.15am Y4 – 10.30- 11.30am EY's – 1.30-2.30pm <i>Children to wear PE kit school on their year group sports day</i>
<b>Friday</b>	<b>23<sup>rd</sup> May 2025</b>	<b>School Closes</b>
<b>Wednesday</b>	<b>4<sup>th</sup> June 2025</b>	<b>School Opens</b>
Thursday	5 <sup>th</sup> June 2025	Ascension Service 2.15-3.00pm @ Church <i>Everyone welcome</i>
Thursday	5 <sup>th</sup> June 2025	Y5/6 Lake District Parent Briefing 5.00– 6.00pm
Friday	6 <sup>th</sup> June 2025	Friends Meeting 2.00-3.00pm
Monday – Friday	9 <sup>th</sup> – 13 <sup>th</sup> June 2025	Year 1 Phonics Screening Check Week



Monday	9 <sup>th</sup> June 2025	Y6 Leavers Service @ the Anglican Cathedral <i>Parents/ carers welcome to attend, but need to make their own way there.</i>
Thursday	12 <sup>th</sup> June 2025	Y6 Communion 9.30am @ Church <i>Everyone welcome</i>
Thursday	19 <sup>th</sup> June 2025	Y2 Trip to Liverpool Philharmonic Hall
Friday	20 <sup>th</sup> June 2025	Class Photographs <i>All children to wear correct school uniform</i>
Friday	27 <sup>th</sup> June 2025	EYP Family Worship 9.00am
Monday -Tuesday	30 <sup>th</sup> June-1 <sup>st</sup> July 2025	Y6 RHS Transition Days
Thursday	3 <sup>rd</sup> July 2025	Choir Lost in Music event, Town Hall
Friday	4 <sup>th</sup> July 2025	EYM Family Worship 9.00am
Wednesday -Friday	9 <sup>th</sup> -11 <sup>th</sup> July 2025	Y5 and Y6 Lake District Residential
Friday	11 <sup>th</sup> July 2025	EY's Trip to Knowsley Safari Park
Friday	18 <sup>th</sup> July 2025	Children's University Passport Bank Children's University Graduation 11am @ Church. <i>Parents of children graduating and choir welcome to attend.</i>
Monday	21 <sup>st</sup> July 2025	Awards Evening @ Church Year 6 – 6.00pm EYFS - Year 5 – 7.00pm  <i>The church carpark will be closed to St Ann's due to event at Millennium Centre on the same evening.</i>
Monday	21 <sup>st</sup> July 2025	Year 6 Leavers' Disco 7.00-8.00pm
Tuesday	22 <sup>nd</sup> July 2025	Year 6 Leavers' Service 9.00am <i>Y6 Parents/ Carers welcome</i>  Y6 to bring shirt to school to have signed
<b>Tuesday</b>	<b>22<sup>nd</sup> July 2025</b>	<b>School Closes</b>