



# St Ann's Church of England Primary School



*Together, we aim high; with God's love, we can fly!*

Value of the Half Term

*Friendship*

Newsletter Issue 29

Friday 2 May 2025

A true friend is closer than your own family.

Proverbs 18:24

## CONTENTS

1. Ofsted Report
2. Y4 Residential
3. A Spotlight on: Fundamental British Values
4. Sports Days
5. Family Worship
6. Parent Forum
7. Summer Fizz Mini Music Concerts
8. Recommended Reads
9. Safeguarding Top Tip #25
10. Cricket Sessions
11. Well Done
12. General Information/Reminders



Ofsted

## OFSTED REPORT (FEBRUARY 2025)

We would like to take a moment to express our heartfelt gratitude for the kind words of praise and support parents/carers have shared following the release of our recent Ofsted report. Your positive feedback means a great deal to our staff and reinforces the hard work and dedication that our team puts into providing the best possible education for your children.

It is truly uplifting to know that our efforts to create a nurturing and enriching environment are appreciated by our whole community. Your support plays a vital role in our school's success, and we are committed to continuing to work together to ensure that every child at St Ann's Church of England Primary School thrives.

Thank you once again for your encouragement and for being such an integral part of our school community.

KIDS GET THEIR SUPER POWERS BY  
**ATTENDING SCHOOL  
 EVERY DAY** ⚡

BE AN ATTENDANCE  
 SUPERHERO!

Whole school attendance year to date <i>Whole School target 96%</i>	96.63%
Whole school attendance week ending 25 <sup>th</sup> April 2025	95.73
Class with best weekly attendance	100% - 2M

### Attendance Expectations

Children are expected to be in school **every day** unless they are unwell. All other reasons will be unauthorised. If your child is going to be absent, contact school and let us know before 9.25am. Children not in school may receive a phone call home or home visit. In line with our Attendance Policy, we are committed to supporting families in improving their child's attendance, before taking legal action.

## #EveryMomentMatters

**Number of pupils  
 with 100% attendance  
 this week**

**365**

### Punctuality

School gates open at **8.40am**  
 School gates close at **8.50am**  
 School starts at **8.55am**

Children arriving after 8.50am will need to use the main entrance. Children who enter school via the main entrance will be registered as late. Regularly missing the beginning of lessons has a negative impact on a child's progress and wellbeing.



## Y4 RESIDENTIAL

The Year 4 residential trip to Shropshire was a resounding success, with children thoroughly enjoying the wide range of activities available. From adventurous outdoor pursuits to team-building exercises, the experience not only fostered a sense of camaraderie among the children but also allowed them to spend quality time with their friends and staff. I would like to commend the children for their outstanding behaviour and remarkable resilience throughout the trip, demonstrating their ability to embrace new challenges with enthusiasm. This residential provided a valuable opportunity for them to develop essential skills of independence, which will serve them well in the future. A heartfelt thank you goes to the staff who led and supported this visit, ensuring that the children had a safe and memorable experience. Their dedication and commitment made all the difference!



## 2025/26 TERM DATES

	Open On	Close On
<b>Autumn 2025</b>	Wednesday 3 September 2025	Friday 24 October 2025
	Monday 3 November 2025	Friday 19 December 2025
<b>Spring 2026</b>	Monday 5 January 2026	Friday 13 February 2026
	Monday 23 February 2026	Friday 27 March 2026
<b>Summer 2026</b>	Monday 13 April 2026	Thursday 21 May 2026
	Monday 1 June 2026	Friday 17 July 2026

### Easter Bank Holidays:

Good Friday: 3 April 2026

Easter Monday: 6 April

### Bank Holidays during term time:

Monday 4 May 2026

### Inset Days:

1 September 2025

2 September 2025

21 November 2025

22 May 2026

20 July 2026

## A SPOTLIGHT ON: Fundamental British Values



The government defined British values in the 2011 Prevent Strategy, reaffirmed by the Prime Minister in 2014. These values are essential for nurturing children into well-rounded members of society who treat others with respect and tolerance, regardless of their background.

At St Ann's, we reflect these British values in all aspects of our school life. Our aim is to nurture children on their journey through life, helping them grow into safe, caring, democratic, responsible, and tolerant adults who positively impact British society and the world. We encourage our children to be creative, unique, open-minded, and independent individuals, respectful of themselves and others within our school, local community, and beyond.

Our Collective Worship Long Term Plan outlines where Fundamental British Values are taught, and we reinforce these values regularly through our Dojo reward system and various initiatives.

### How We Promote Fundamental British Values

#### 1. Democracy

- We have an elected Rights Respecting Parliament (School Council). During Democracy Day, children create manifestos and present them to their class, participating in a ballot to elect their representatives. Badges are awarded by the Mayor of St Helens to signify their roles.
- The origins of democracy are explored through research on Ancient Greece.
- Democracy is integrated into PSHE lessons, collective worship, and real-life contexts throughout the year, emphasising good citizenship.
- We encourage volunteerism and activism, such as local litter picking and fundraising for good causes.
- We celebrate UK Parliament Week and provide opportunities for children to vote on school-related matters, like new playtime equipment.

#### 2. The Rule of Law

- Our Rights Respecting Relationships and Behaviour Policy sets high standards for pupil conduct, underpinned by our three core rules: Courtesy, Care, and Concentration.
- Through collective worship and PSHE, children learn about trust, respect, and morality, understanding right from wrong.
- Local community police officers and other visitors discuss their roles, reinforcing the importance of the rule of law.
- Activities like Bikeability teach children about safety and the law.

#### 3. Individual Liberty

- Our Christian values and PSHE curriculum emphasise personal responsibility, choice, ambition, and aspiration.
- Children are encouraged to explore interests in art, music, and sports through various clubs.
- We teach children how to keep themselves safe, including online safety, through lessons and workshops with organisations like the NSPCC.
- Aspirations Focus Days highlight diverse career choices, linking real-life opportunities to classroom learning.

#### 4. Mutual Respect

- We are a UNICEF Rights Respecting School. Displays throughout the school promote respect for all children's rights.
- Our Rights Respecting Relationships and Behaviour Policy emphasises mutual respect.
- Through Christian values and PSHE, children learn to cooperate, celebrate differences, and support one another.
- Specific workshops focus on understanding protected characteristics and charitable work.
- We celebrate Interfaith Week and World Religion Day, promoting understanding of various faiths.

#### 5. Tolerance of Different Faiths and Beliefs

- Our Rights Respecting Relationships and Behaviour Policy promotes tolerance, supported by our Community Engagement and Equality & Diversity policies.
- Tolerance is taught through Religious Education and PSHE, where children learn about different religions, beliefs, places of worship, and festivals.
- Local religious leaders visit the school, and children have opportunities to explore places of worship.
- We make explicit connections to tolerance across subjects, including English and the wider curriculum.

## SPORTS DAYS

Please find detailed below the dates and time for this year's Sports Days (weather permitting). If sports days need to be cancelled due to inclement weather, we will send out a message as soon as possible.

YEAR GROUP	DATE	TIME	RESERVE DAY
EYs	Tuesday 20 May	1.30-3.00pm	Friday 23 May
Y1	Tuesday 20 May	9.15-10.15am	Thursday 22 May
Y2	Tuesday 20 May	10.30-11.30am	Thursday 22 May
Y3	Wednesday 21 May	9.15-10.15am	Friday 23 May
Y4	Wednesday 21 May	10.30-11.30am	Friday 23 May
Y5	Wednesday 21 May	1.00-2.00pm	Thursday 22 May
Y6	Wednesday 21 May	2.00-3.00pm	Thursday 22 May

### FAMILY WORSHIP



Well done to 1S on a fabulous Family Worship all about Aspirations.

On **Friday 9 May at 9.00am**, 1T will lead their Family Worship in the hall all about Earth Day. Please wait at the back of school by the hall door ready to be let in.

### PARENT FORUM



The next Parent Forum session for their year's class reps will take place on **Friday 16 May at 2.00pm**.

Please speak with your class representative if you would like to have anything raised at the meeting. We look forward to seeing our reps soon.



### SUMMER FIZZ MINI MUSIC CONCERTS

We are excited to announce our Summer Fizz Mini Music Concert in partnership with St. Helens Borough Music Service, where every class will perform to showcase what they've learned in their music lessons. The children have worked incredibly hard all year and are eager to share their vocal and instrumental talents with you. Please check below for your child's performance time and date. On the day, you'll be welcomed at the BASE door and guided to the studio by a member of staff. Performances will last approximately 30 to 45 minutes.

6th May 2025	10:15 – 11:00am	3E and 3D
	2:30 – 3:00pm	1T and 1S
7th May 2025	1:30 – 2:00pm	5BF and 6A
	2:30 – 3:00pm	5G and 6M
8th May 2025	10:15 – 11:00am	4S and 4H
	2:15 – 3:00pm	2O and 2M



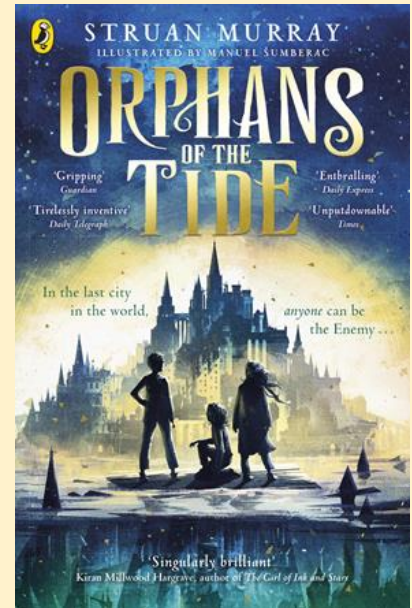
## RECOMMENDED READS

### Orphans of the Tide By Struan Murray

Recommended for 9-14 year olds

A thrilling tale set on the last island on a flooded Earth. The Enemy waits in the city walls, tempting their host with every wish they desire. But with each wish, the Enemy gets stronger whilst the host gets weaker. Will the host find a way to defeat the Enemy and save themselves?

Happy reading! Mr Albrecht 😊



## SAFEGUARDING TOP TIP #25

### Stress



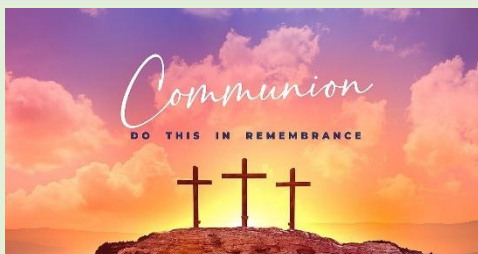
Lots of different things can cause stress and it can feel difficult or like you can't cope. But you can manage stress, here are some tips that can help you get it under control. Sometimes stress can be helpful, it can motivate you to get things done. Or help you see that things need to change.

#### *5 things that you can try*

1. writing or drawing how you feel
2. exercise and sports
3. planning what you do
4. having healthy food and drink
5. take deep breaths.

For more advice visit

<https://www.childline.org.uk/info-advice/your-feelings/anxiety-stress-panic/coping-with-stress/>



## COMMUNION

Y5 will attend the Communion Community Service at Church on Thursday 22 May @ 9.30am.

Everyone welcome!

## CRICKET SESSIONS

Last Friday, Years 3 and 5 were fortunate to take part in cricket sessions led by a specialist cricket coach. All the classes thoroughly enjoyed their sessions and had lots of fun while developing new skills and confidence in the sport.



Following the sessions, the cricket coach was impressed with the enthusiasm and talent shown by the children and would love to invite them to join **All Stars Cricket** at **Rainhill Cricket Club**, located at the Recreation Ground, Victoria Terrace, Rainhill, St. Helens, L35 0LH. Sessions take place on **Friday evenings**, with the following schedule:

- **Key Stage 1 (Ages 5–7):** 5:30pm – 6:30pm
- **Years 3 and 4 (Under 9s):** 5:00pm – 6:00pm
- **Years 5 and 6 (Under 11s):** 6:00pm – 7:00pm
- **Ages 13 and Under 15:** 7:00pm – 8:00pm

It's a fantastic opportunity for children to stay active, make new friends, and develop their cricket skills in a fun and supportive environment. Sessions can be booked online. When registering, each child will receive a personalised All Stars player pack.

## WELL DONE

Congratulations to Evan, Thomas and Leo in 3E, who completed a sponsored walk for The National Autistic Society on Sunday 6th April. They raised an amazing £450 for this worthwhile cause. They will receive a certificate and medal from the charity in May.





## Do you know the **DIFFERENCE** between an '**ONLINE**' FRIEND and a real one? How does this differ from your **CHILD'S VIEW**?

- Are you familiar with who they are in **contact** with whilst playing games?
- Have you asked about the **chat** facility?
- Do you know the **content** and **age restrictions** for these games?



Visit [gaming.lgfl.net](https://gaming.lgfl.net) for advice and activities

Source: Children and parents: media use and attitudes report 2024

## How can **YOU GET INVOLVED**?



- **ASK** what type of games your child enjoys – are they **age-appropriate**?
- **PLAY** games together - keep the tech in **shared spaces** rather than bedrooms
- **TALK** about **who they are playing** with - what **information** are they sharing?
- **EXPLAIN** what is/isn't **appropriate to share**, e.g. personal details to identify them/location
- **AGREE** how they will spend their **money** online
- **DISCUSS** what they would do if they were **bullied** online, and what steps to take
- **DECIDE** **how long is appropriate** to play in one session - how many sessions a day
- **SETUP** these restrictions in **parental settings** with your child



Visit [gaming.lgfl.net](https://gaming.lgfl.net) for advice and activities to keep them safe

Source: Children and parents: media use and attitudes report 2024

# st helens heritage festival

**Save the Date!**  
**Saturday 31 May 2025**  
**St Helens town centre**

Free family friendly event:  
all are welcome to  
celebrate and share the  
rich and varied heritage  
of St Helens Borough



 St Helens  
Archive Service

 Heritage Fund  
Heritage  
Fund

**ST HELENS**  
BOROUGH COUNCIL

In partnership with Knowsley CLCs, all parent/carers are invited to an:

# Online Safety Information Session

This session is delivered virtually so can be watched from anywhere!  
We will share the link with you privately.

**Current trends** – what children are doing online and what apps/games are popular amongst children.

**Understanding the Risks** – a look at the risks associated with using technology, in particular when using social media, online gaming & live streaming.

**What can you do?** – suggestions on how you can support your child with their online lives and what parental controls are available to help you.

**Further Support** – signposting to services that are available to help you.

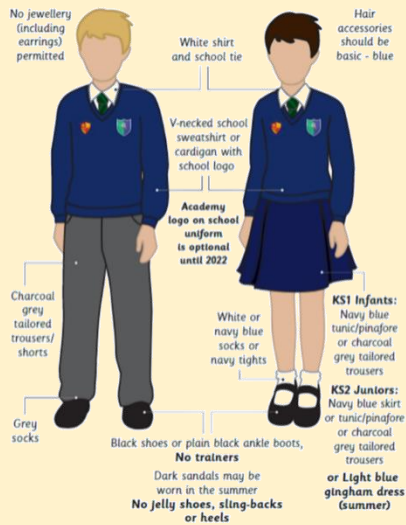
**WEDNESDAY  
7TH MAY  
2025  
4PM – 4.45PM**



[https://teams.microsoft.com/l/meetup-join/19%3ameeting\\_NzViMDEzNGEtYWM3Ni00MjkzLTg1ODAtZWl2Y2YyZDkwNmFh%40thread.v2/0?context=%7b%22Tid%22%3a%22dcbd1ea5-3b10-49a2-bf8f-5fd59edcd762%22%2c%22Oid%22%3a%225772fa8f-9814-4199-aef2-9195804f833e%22%7d](https://teams.microsoft.com/l/meetup-join/19%3ameeting_NzViMDEzNGEtYWM3Ni00MjkzLTg1ODAtZWl2Y2YyZDkwNmFh%40thread.v2/0?context=%7b%22Tid%22%3a%22dcbd1ea5-3b10-49a2-bf8f-5fd59edcd762%22%2c%22Oid%22%3a%225772fa8f-9814-4199-aef2-9195804f833e%22%7d)

## GENERAL INFORMATION/REMINDERS

### SCHOOL UNIFORM REMINDERS



*\*Please note, it is not compulsory to wear items of clothing with the school and Trust logos on. Children may wear plain navy-blue items of school uniform.*

### SCHOOL SHOES REMINDER



### INDIVIDUAL HEALTH CARE PLANS

If you have notified school that your child has a medical condition that requires an Individual Health Care Plan please ensure that if there are any changes to their condition a new form is completed.

If your child has a newly diagnosed condition that requires an Individual Health Care Plan please contact the school office to arrange for a form to be completed.

### TOAST

The deadline for toast for this half term has now passed. Please see the flyer attached to this newsletter for details of the payments required for future half terms.

### CONTACT DETAILS, CONSENT & PERMISSIONS

On a regular basis please check your contact details, consent and permissions on Arbor to make sure they are up to date for your child. Thank you

### MELLOR'S SCHOOL MEAL MENU

For a copy of Mellor's most up to date school meals menu, please check out our website by clicking on the following link: <https://www.rainhillstanns.co.uk/page/?title=School+Dinner+Menu&pid=46>

*Please note, the menu is subject to change where there is a shortage of supplies.*

**TERM DATES 2024-25**

Term	Open on	Close on
Autumn Term 2024	4 <sup>th</sup> September 2024	25 <sup>th</sup> October 2024
	4 <sup>th</sup> November 2024	20 <sup>th</sup> December 2024
Spring Term 2025	6 <sup>th</sup> January 2025	14 <sup>th</sup> February 2025
	24 <sup>th</sup> February 2025	4 <sup>th</sup> April 2025
Summer Term 2025	22 <sup>nd</sup> April 2025	23 <sup>rd</sup> May 2025
	4 <sup>th</sup> June 2025	22 <sup>nd</sup> July 2025

**PURCHASING SCHOOL ITEMS**

If you wish to purchase a school item this can now be done through Arbor. If you make a purchase please email the school office at [stannsce@three-saints.org.uk](mailto:stannsce@three-saints.org.uk) so that arrangements can be made to issue the item. Current prices are as follows:

**School Bag £10.00**  
**Junior Tie £4.00**  
**Elasticated Tie £3.50**  
**Children's University Passport £5.00**  
**Replacement Home School Diary £5.00**

**Courtesy****Care****Concentration****St. Ann's Church of England Primary School**

View Road, Rainhill, Merseyside, L35 0LQ

Tele: 0151 426 5869

Website: <http://www.rainhillstanns.co.uk>Email: [stannsce@three-saints.org.uk](mailto:stannsce@three-saints.org.uk)Twitter: [@RainhillStAnns](https://twitter.com/RainhillStAnns)

Headteacher: Mrs Laura Rynn

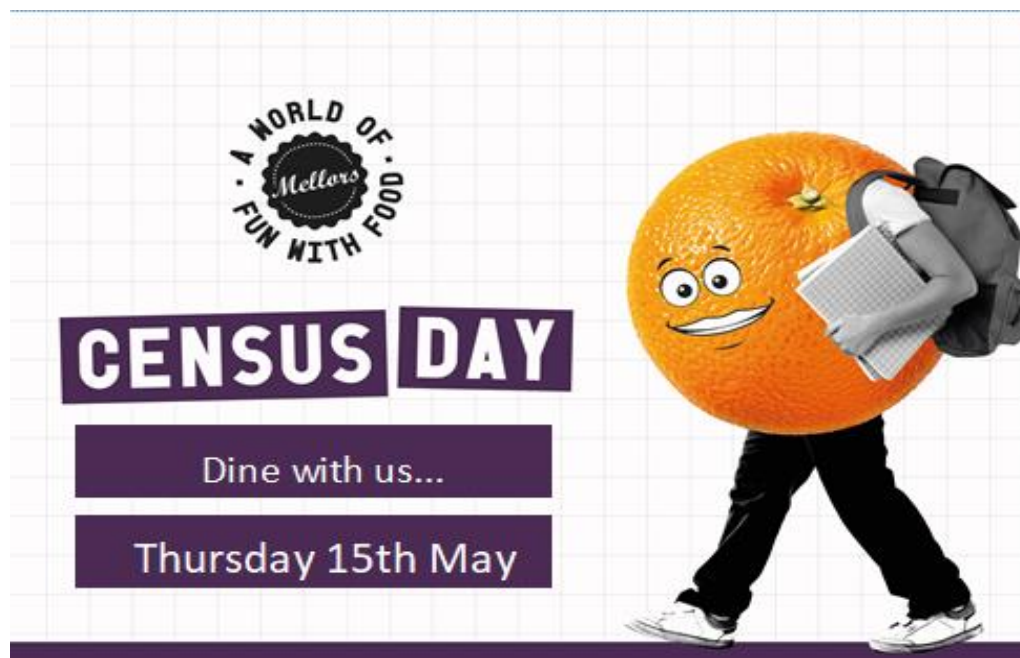
‘But those who trust in the Lord, they will find new strength.  
 They will soar high on wings like eagles’ **Isaiah 40:31**

**DATED FOR DIARY APRIL-JULY 2025**

DAY	DATE	EVENT
Friday	9 <sup>th</sup> May 2025	1T Family Worship 9.00am
Monday -Thursday	12-15 <sup>th</sup> May 2025	KS2 SATS
Friday	16 <sup>th</sup> May 2025	Y6 Fun Day
Monday	19 <sup>th</sup> May 2025	Mark Barrow Run 9.00 -11.30am Parents/ carers not invited to this event <i>All year groups to wear PE kit to school today</i>
Tuesday	20 <sup>th</sup> May 2025	Sports Day Y1 - 9.15-10.15am Y2 - 10.30-11.30am EY's - 1.30- 2.30pm <i>Children to wear PE kit school on their year group sports day</i>
Tuesday	20 <sup>th</sup> May 2025	Y1 & Y2 RHSE Parent Workshop 5.00pm
Wednesday	21 <sup>st</sup> May 2025	Sports Day Y3 - 9.15-10.15am Y4 - 10.30-11.30am Y5 – 1.00-2.00pm Y6 – 2.15-3.15pm

		<i>Children to wear PE kit school on their year group sports day</i>
Wednesday	21 <sup>st</sup> May 2025	Y3 & Y4 RHSE Parent Workshop 5.00pm
Thursday	22 <sup>nd</sup> May 2025	Y5 Communion 9.30am @ Church
Thursday	22 <sup>nd</sup> May 2025	Reserve Sports Day Y1 – 9.15-10.15am Y2 – 10.30-11.30am Y5 – 1.00-2.00pm Y6 – 2.15-3.15pm <i>Children to wear PE kit school on their year group sports day</i>
Thursday	22 <sup>nd</sup> May 2025	Y5 & Y6 RHSE Parent Workshop 5.00pm
Friday	23 <sup>rd</sup> May 2025	Children’s University Passport Bank
Friday	23 <sup>rd</sup> May 2025	Reserve Sports Day Y3 – 9.15-10.15am Y4 – 10.30- 11.30am EY’s – 1.30-2.30pm <i>Children to wear PE kit school on their year group sports day</i>
<b>Friday</b>	<b>23<sup>rd</sup> May 2025</b>	<b>School Closes</b>
<b>Wednesday</b>	<b>4<sup>th</sup> June 2025</b>	<b>School Opens</b>
Thursday	5 <sup>th</sup> June 2025	Ascension Service 2.15-3.00pm @ Church <i>Everyone welcome</i>
Thursday	5 <sup>th</sup> June 2025	Y5/6 Lake District Parent Briefing 5.00– 6.00pm
Friday	6 <sup>th</sup> June 2025	Friends Meeting 2.00-3.00pm
Monday – Friday	9 <sup>th</sup> – 13 <sup>th</sup> June 2025	Year 1 Phonics Screening Check Week
Monday	9 <sup>th</sup> June 2025	Y6 Leavers Service @ the Anglican Cathedral <i>Parents/ carers welcome to attend, but need to make their own way there.</i>
Thursday	12 <sup>th</sup> June 2025	Y6 Communion 9.30am @ Church <i>Everyone welcome</i>
Thursday	19 <sup>th</sup> June 2025	Y2 Trip to Liverpool Philharmonic Hall
Friday	20 <sup>th</sup> June 2025	Class Photographs <i>All children to wear correct school uniform</i>
Friday	27 <sup>th</sup> June 2025	EYP Family Worship 9.00am
Monday -Tuesday	30 <sup>th</sup> June-1 <sup>st</sup> July 2025	Y6 RHS Transition Days
Thursday	3 <sup>rd</sup> July 2025	Choir Lost in Music event, Town Hall
Friday	4 <sup>th</sup> July 2025	EYM Family Worship 9.00am
Wednesday -Friday	9 <sup>th</sup> -11 <sup>th</sup> July 2025	Y5 and Y6 Lake District Residential
Friday	11 <sup>th</sup> July 2025	EY’s Trip to Knowsley Safari Park
Friday	18 <sup>th</sup> July 2025	Children’s University Passport Bank Children’s University Graduation 11am @ Church. <i>Parents of children graduating and choir welcome to attend.</i>

Monday	21 <sup>st</sup> July 2025	Awards Evening @ Church Year 6 – 6.00pm EYFS - Year 5 – 7.00pm  <i>The church carpark will be closed to St Ann's due to event at Millennium Centre on the same evening.</i>
Monday	21 <sup>st</sup> July 2025	Year 6 Leavers' Disco 7.00-8.00pm
Tuesday	22 <sup>nd</sup> July 2025	Year 6 Leavers' Service 9.00am Y6 Parents/ Carers welcome  Y6 to bring shirt to school to have signed
<b>Tuesday</b>	<b>22<sup>nd</sup> July 2025</b>	<b>School Closes</b>



### Main

#### Build a Burger

##### Choice of

Cheese, gherkin, tomato sauce

Served with wedge potatoes, beans, peas, sweetcorn or salad

Vegetable burger

Served with wedges, beans, peas and sweetcorn or salad

### Dessert

##### Choice of

Ice cream or

Cookie or

Yoghurt or

Fresh fruit

# TOAST

If you would like your child to have Toast every half term please see below for the amount due each half term and the date the amount is required by. Payments should be made to your Arbor Toast account. Payments can be made in advance of these dates if you wish and the credit will be used once the due date arrives.

	Amount Due	Date Toast Account to be in credit by
Autumn 1	£9.50	Midday 16th July 2024
Autumn 2	£8.50	Midday 15th October 2024
Spring 1	£7.50	Midday 17th December 2024
Spring 2	£7.50	Midday 7th February 2025
Summer 1	£6.00	Midday 26th March 2025
Summer 2	£8.75	Midday 20th May 2025

Total for year £47.75



**STUDY SMART**

Free Online Courses

**ENROL WITH US TODAY!**

**FREE Level 2 MENTAL HEALTH COURSE Online!**

Start Date:  
12th May

Understanding Mental Health First Aid & Mental Health Advocacy in the workplace



**Three Week Course**  
Mon - Fri  
9:30 - 11:30am  
12:30 - 2:30pm

[www.studvsmartuk.online](http://www.studvsmartuk.online)

**STUDY SMART**  
Free Online Courses



**ncfe. | cache**



**Fully Funded School Support Course**

**Available in Levels 1, 2 & 3**

\*Please go to our website for more detailed information.



**6 Week Course**  
Mon - Fri  
Daily sessions  
1st session 9:30 - 11:30am  
2nd session 12:30 - 2pm

[www.studysmartuk.online](http://www.studysmartuk.online)

**St Ann's Church, Rainhill presents**

# **A MUSICAL CONCERT**

**Featuring  
The Rednotes  
and Musical Groups  
Led by Steve Rayner**

**Saturday 10th May at 7.30pm  
St Ann's Church, Rainhill**

**Tickets are free  
Refreshments will be  
served at the interval**

**For further information call  
Rachel on 07523 787577**