



# St Ann's Church of England Primary School



*Together, we aim high; with God's love, we can fly!*

Value of the Half Term

*Courage*

Newsletter Issue 19

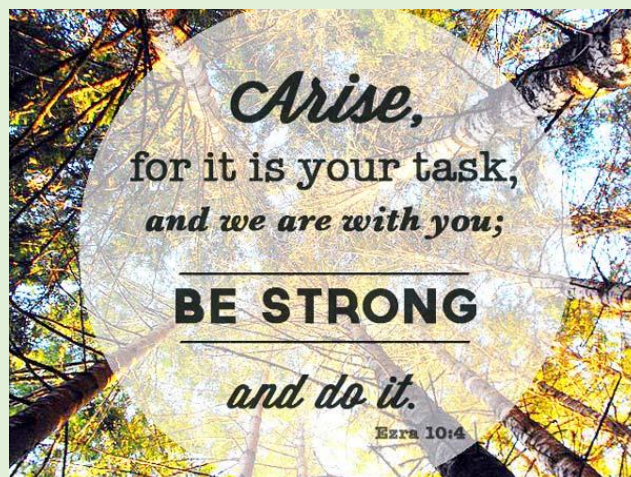
Friday 31 January 2025

Be on your guard; stand firm in the faith; be men of courage; be strong.

1 Corinthians 16:13

## CONTENTS

1. Author Visit: Suzanne Brownrigg
2. Star Day
3. 4H Swimming Lessons
4. Family Worship
5. Y3 Communion
6. A Spotlight on: Art & Design
7. Parent Insight Sessions
8. 2025/26 Term Dates
9. 6M Super Leaders Update
10. Children's Mental Health Week
11. Punctuality Update - Important
12. Safeguarding Top Tip #15
13. Spring Disco
14. General Information/Reminders



## AUTHOR VISIT: SUZANNE BROWNRIGG

We were delighted to welcome children's author Suzanne Brownrigg to St Ann's on Monday. Suzanne delivered a signed copy of her new book, *The Wrong Tracks*, to our Head Boy and Head Girl. The novel has a special link to Rainhill due to it being based on the famous Rainhill Trials. It follows the life of young Edward Entwistle who is offered a job at the Stephenson's Steam Locomotive Manufactory as they prepare for Rainhill Trials competition but all is not as it seems! A copy of the book is now in our Year 6 library for all the pupils to enjoy.



KIDS GET THEIR SUPER POWERS BY  
**ATTENDING SCHOOL  
 EVERY DAY** ⚡

BE AN ATTENDANCE  
**SUPERHERO!**

Whole school attendance year to date <i>Whole School target 96%</i>	96.64%
Whole school attendance week ending 24 <sup>th</sup> January 2025	96.64%
Class with best weekly attendance	1S – 99.64%

## #EveryMomentMatters



### Attendance Expectations

Children are expected to be in school **every day** unless they are unwell. All other reasons will be unauthorised. If your child is going to be absent, contact school and let us know before 9.25am. Children not in school may receive a phone call home or home visit. In line with our Attendance Policy, we are committed to supporting families in improving their child's attendance, before taking legal action.

**Number of pupils  
 with 100% attendance  
 this week**

**371**

### Punctuality

School starts at **8.50am**.  
 Lessons start at **8.50am**.

School gates open at 8.40am.

Children arriving after 8.50am will need to use the main entrance. Children who enter school via the main entrance will be registered as late. Regularly missing the beginning of lessons has a negative impact on a child's progress and wellbeing.



## STAR DAY

We are once again very excited to be celebrating STAR Day on Friday 14th February. STAR Day is a fantastic opportunity for our school community to come together and raise money to support local, national and global charities that are making a difference to others in our world.

This year on STAR Day will be supporting three charities

- ACE - Building Schools in Africa
- Diabetes UK
- The Bobby Collieran Trust

On the day we are asking children to come to school wearing BLUE and all children across the school will complete a Star making activity!

**We kindly ask that to support our charities and STAR DAY a £2 donation is made via Arbor.**

## 4H SWIMMING LESSONS



Starting **Tuesday 4 February** 4H will commence daily swimming lessons for two weeks (with the exception of Mondays). Please refer to separate letter for further details.

School closes for half term on  
Friday 14 February.

School re-opens after half term  
on Monday 24 February.

## FAMILY WORSHIP

On **Friday 14 February** 3D will lead their Family Worship in the hall.

Please wait at the back of school by the hall door ready to be let in.



## YEAR 3 COMMUNION

Y3 will take part in the Communion Service at church on Thursday 13 February @ 9.30am.



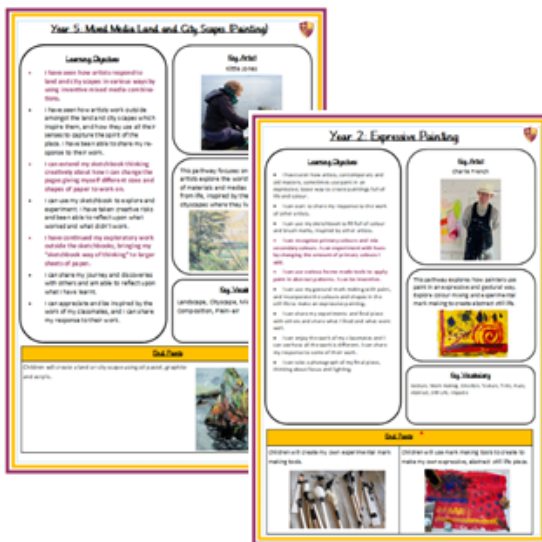
*Everyone is welcome!*

# Shining a Spotlight on the Curriculum: Art & Design



At St Ann's, our Art curriculum has been carefully curated using resources from Access Art. Our Long Term Plans highlight clear progression, enabling our children to build upon their existing knowledge and develop their artistic skills. Each year, every child has exciting opportunities to enhance their drawing, painting and 'making' skills, which form the basis of our unit topics. Our teachers deliver each unit of work over three half terms throughout the school year. Each unit begins with an inspirational artist focus, where children explore the artwork of modern or traditional artists. Children then complete a series of sessions on skill development, which are evidenced in their sketch books. Finally, new skills are put into practise in the children's final pieces, which are evaluated and celebrated at the end of a unit. We strive to ensure that the children enjoy working creatively and feel inspired to work expressively in our Art lessons. We firmly believe that every child is an artist and that they should feel free to create and share part of themselves through their artwork.

**EVERY  
CHILD  
IS AN  
ARTIST**  
-PICASSO



We have been extremely fortunate to benefit from working with an expert consultant who is a specialist in her field of Art. Our teachers have received engaging and insightful CPD training sessions on how to use sketchbooks - which has allowed them to successfully model this to the children - and understand the key concepts that connect Art across each year group. Our key concepts include line, shape, form, space, colour, tone, texture and pattern. Children are taught how to use these key concepts within their artwork and they build upon this knowledge as they move into the next year group.

We are a school of highly creative individuals, so whenever a competition arises we love to participate. This year, children in the Arts Council will be taking part in the NATRE Spirited Arts competition, whilst our current Y3s have had the opportunity to see their own Art work displayed at the Rainhill Flower Festival, which was a wonderful opportunity for our children to experience having their work showcased on a larger scale with the wider community.

We also operate a KS2 Art Club. If your child is interested in Art and would like to attend an extra curricular club, please speak to your child's class teacher and they will be happy to supply more information.

## PARENT INSIGHT SESSIONS

Week commencing **Monday 3 February** our next series of Parent Insight sessions will take place. These will be focused on **e-safety** in the run up to national Safer Internet Day. Please see below for the dates, time and entrances.

1 parent/ carer is invited to join their child for one demonstration lesson which is designed to give you an insight into teaching and learning in the subject area. Dates and times can be seen below.

Lessons will take place in the Studio to ensure there is enough space. To enter, parents/ carers should wait at the front of school by the blue Base door 5 minutes before the start of the session.

**Siblings who do not attend the school are not permitted to attend for health and safety reasons.**

Mobile phone should be switched off before you enter the premises.

The session will begin with a brief talk from your child's class teacher about the session you will take part in.

Children whose parents/ carers do not attend, will still take part in the lesson.

YEAR GROUP	DATE	TIME
EYM	Thursday 6 February	9.00pm
EYP	Thursday 6 February	10.15pm
1S	Wednesday 5 February	1.00pm
1T	Wednesday 5 February	2.15pm
2M	Tuesday 4 February	1.00pm
2O	Tuesday 4 February	2.15pm
3D	Wednesday 5 February	9.00am
3E	Wednesday 5 February	10.15am
4H	Monday 3 February	2.15pm
4S	Monday 3 February	1.00pm
5BF	Monday 3 February	9.00am
5G	Monday 3 February	10.15am
6A	Tuesday 4 February	9.00am
6M	Tuesday 4 February	10.15am



## 2025/26 TERM DATES

	Open On	Close On
<b>Autumn 2025</b>	Wednesday 3 September 2025	Friday 24 October 2025
	Monday 3 November 2025	Friday 19 December 2025
<b>Spring 2026</b>	Monday 5 January 2026	Friday 13 February 2026
	Monday 23 February 2026	Friday 27 March 2026
<b>Summer 2026</b>	Monday 13 April 2026	Thursday 21 May 2026
	Monday 1 June 2026	Friday 17 July 2026

### **Easter Bank Holidays:**

Good Friday: 3 April 2026

Easter Monday: 6 April

### **Bank Holidays during term time:**

Monday 4 May 2026

### **Inset Days:**

1 September 2025

2 September 2025

21 November 2025

22 May 2026

20 July 2026

## **6M SUPER LEADERS UPDATE: GLOBAL AMBASSADORS**

This half term, 6M had the fantastic opportunity to take part in a recycling information session as 'Global Ambassadors', led by Rachel from Veolia. The session helped the children understand the key items we can recycle and how our actions impact the planet. Inspired by their learning, they created their own recycling-themed board games to share their knowledge in a fun and interactive way.

We look forward to sharing our work at our Super Leaders service in church at the end of the half term!



## **CHILDREN'S MENTAL HEALTH WEEK**

Children's Mental Health Week 2025 is taking place from 3rd - 9th February 2025. This year the theme is Know Yourself, Grow Yourself in partnership with Here4You, supported by The Walt Disney Company and the Inside Out 2 characters. Miss Foster will lead a Worship focusing on Children's Mental Health Week on Monday 3rd February and our social media pages will provide some tweets and links from Place2Be in order to support this brilliant organisation and direct you to activities for your child. A number of year groups have dedicated lessons build into their PSHE topics too focusing upon Kindness, Emotions and Physical and Mental Health.



## PUNCTUALITY UPDATE - IMPORTANT

# Getting Your Child to School Really Matters

### Did You Know... ?



In a School Year, If Your Child is Late Every Day By...	Your Child Would Have Lost Approximately...	or They Would Have Missed Approximately...
5 Minutes	3.5 Days from School	20 Lessons
10 Minutes	7 Days from School	41 Lessons
15 Minutes	10 Days from School	55 Lessons
20 Minutes	14.5 Days from School	82 Lessons
30 Minutes	22 Days from School	123 Lessons

**Please Encourage Punctuality to Maintain Attendance**

We would like to bring to your attention a change to our attendance policy. We believe that arriving on time is essential for our students to make the most of their learning opportunities. Frequent lateness can have a significant impact on a child's education, and persistent lateness may lead to legal action.

Please be mindful that 2 minutes of lateness every day over two weeks adds up to 20 minutes of missed learning time.

We ask for your cooperation with the following:

- The school day starts at 8:55 am. If your child is late, please ensure they present at the front office and sign in.
- If your child arrives between 8.55am and 9.25am they will be coded as L (late).
- If your child arrives after 9.25am they will be coded as a U and this is an unauthorised absence.

We greatly appreciate your support in helping to ensure all students are punctual and ready to start their learning on time. Should you have any concerns regarding your child's attendance, please do not hesitate to contact the Family Support Worker.

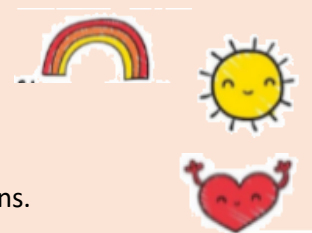
### SAFEGUARDING TOP TIP #15

#### Mental Health

How to promote good mental health with your child

- Connect with your child every day and share your own feelings.
- Ensure your child has an opportunity to have quiet time together.
- Praise your child when they do well, recognise efforts as well as achievements.
- Actively listen to your child with no distractions.
- Keep your promises, if you're not able to make sure you explain your reasons.
- Encourage your child to focus on the moment and not dwell on events.
- Practise self-care for yourself and set the standard.
- Help your child to develop a language of feelings, use stories or play together to help them to understand.

Keeping children safe is everyone's responsibility



## SPRING DISCO

On **Thursday 13 February**, we are holding an after-school disco to raise money for school fund. The disco is £3.00. At the disco children will receive a drink of juice and will go home with a packet of crisps. EYs & Y1 children attending the disco should wear their disco clothes to school. Y2-Y6 children should be dropped off at the Y1 classroom door on the yard.

### DISCO TIMES

EYs & Y1 Disco: 3.15-4.15pm

Y2 & Y3 Disco: 4.30-5.30pm

Y4-Y6 Disco: 5.45-6.45pm

YEAR GROUP	COLLECTION POINT
EYs, Y1, Y2 & Y3	Own classroom
Y4	Year 1 door on yard
Y5	Back hall door
Y6	Front door of school

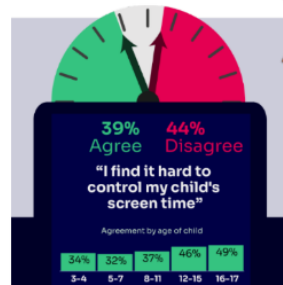


**PLEASE NOTE: CHILDREN ARE NOT PERMITTED TO WALK HOME FROM THE DISCO ON THEIR OWN. ALL CHILDREN MUST BE COLLECTED BY THEIR RESPONSIBLE ADULT.**



### **WORRIED** about their **SCREENTIME??**

Do you know **HOW LONG YOUR CHILD SPENDS** online daily?



- Children spent an average **3 hours 5 minutes per day** accessing the internet, across smartphones, tablets and computers
- Four in ten (39%) parents of children aged 3-17 report finding it **hard to control their child's screentime**



**YMCA**

# Family Matters

FOR FAMILIES WITH CHILDREN AGED 5-11 YEARS.

**Weekly Family Sessions for 2025.**

Sutton Family Hub - Wednesdays 3:30pm-5:00pm  
Newton Family Hub - Thursdays 3:30pm-5:00pm

Activities including:

- Indoor and outdoor activities
- Sports and board games
- Switch Games
- Arts and Crafts
- Activities for the whole family

BSL Interpreters are available on request  
To get in touch with us please contact:  
Email: [childrenscentres@sthelens.gov.uk](mailto:childrenscentres@sthelens.gov.uk)  
Telephone: 01744 673420  
Text: 07761 04527

No need to book, just drop-in!



# ATTENDANCE REWARD RAFFLE

*At St Ann's we are relentless in our focus on attendance because we want the best for our pupils. The research speaks for itself, children with strong levels of attendance, fulfil their full potential and develop the skills and personal qualities required for a happy and fulfilled life.*

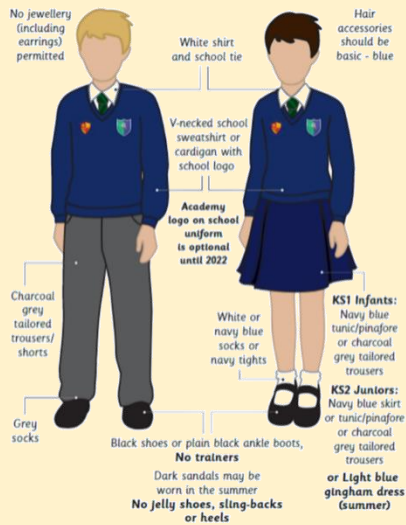
## Prize £50 Amazon Voucher

All children with **96%+ attendance**, and who have not taken a holiday during term time, by Friday 23 May will be entered into our first ever Attendance Raffle. **GOOD LUCK** 😊



## GENERAL INFORMATION/REMINDERS

### SCHOOL UNIFORM REMINDERS



*\*Please note, it is not compulsory to wear items of clothing with the school and Trust logos on. Children may wear plain navy-blue items of school uniform.*

### SCHOOL SHOES REMINDER



### INDIVIDUAL HEALTH CARE PLANS

If you have notified school that your child has a medical condition that requires an Individual Health Care Plan please ensure that if there are any changes to their condition a new form is completed.

If your child has a newly diagnosed condition that requires an Individual Health Care Plan please contact the school office to arrange for a form to be completed.

### TOAST (Y1-Y6 ONLY)

If you would like your child to have Toast at breaktime for Spring 2 (24<sup>th</sup> February – 4<sup>th</sup> April) please ensure that your Arbor Toast account has a balance of at least £7.50 by 7<sup>th</sup> February. If your account is not in credit by at least this amount by this date we will issue a reminder by In-App message. If payment is still not received by the date stated in the reminder we will be unable to provide your child with toast for the ensuing half term. Please see the weekly Newsletter for full details.

### EARLY YEARS SNACK

Early Years children receive snack on a daily basis. We would be grateful if you would make payment on Arbor of the following amounts by the due dates:

- Spring 1 - £10.50 – as soon as possible, if not already done so
- Spring 2 - £10.50 – 7<sup>th</sup> February 2025
- Summer 1 - £8.40 – 26<sup>th</sup> March 2025
- Summer 2 - £12.25 – 20<sup>th</sup> May 2025

## CONTACT DETAILS, CONSENT & PERMISSIONS

On a regular basis please check your contact details, consent and permissions on Arbor to make sure they are up to date for your child. Thank you

## MELLOR'S SCHOOL MEAL MENU

For a copy of Mellor's most up to date school meals menu, please check out our website by clicking on the following link: <https://www.rainhillstanns.co.uk/page/?title=School+Dinner+Menu&pid=46>

Please note, the menu is subject to change where there is a shortage of supplies.

## TERM DATES 2024-25

Term	Open on	Close on
Autumn Term 2024	4 <sup>th</sup> September 2024	25 <sup>th</sup> October 2024
	4 <sup>th</sup> November 2024	20 <sup>th</sup> December 2024
Spring Term 2025	6 <sup>th</sup> January 2025	14 <sup>th</sup> February 2025
	24 <sup>th</sup> February 2025	4 <sup>th</sup> April 2025
Summer Term 2025	22 <sup>nd</sup> April 2025	23 <sup>rd</sup> May 2025
	4 <sup>th</sup> June 2025	22 <sup>nd</sup> July 2025

## PURCHASING SCHOOL ITEMS

If you wish to purchase a school item this can now be done through Arbor. If you make a purchase please email the school office at [stannsce@three-saints.org.uk](mailto:stannsce@three-saints.org.uk) so that arrangements can be made to issue the item. Current prices are as follows:

**School Bag £10.00**

**Junior Tie £4.00**

**Elasticated Tie £3.50**

**Children's University Passport £5.00**

**Replacement Home School Diary £5.00**

**Courtesy**

**Care**

**Concentration**



**St. Ann's Church of England Primary School**

View Road, Rainhill, Merseyside, L35 0LQ

Tele: 0151 426 5869

Website: <http://www.rainhillstanns.co.uk>

Email: [stannsce@three-saints.org.uk](mailto:stannsce@three-saints.org.uk)

Twitter: [@RainhillStAnns](https://twitter.com/RainhillStAnns)

Headteacher: Mrs Laura Rynn

‘But those who trust in the Lord, they will find new strength.  
They will soar high on wings like eagles’ **Isaiah 40:31**

**Parents' Suggestion/Comment Slip**

# TOAST

YEARS 1-6

If you would like your child to have Toast every half term please see below for the amount due each half term and the date the amount is required by. Payments should be made to your Arbor Toast account. Payments can be made in advance of these dates if you wish and the credit will be used once the due date arrives.

	Amount Due	Date Toast Account to be in credit by
Autumn 1	£9.50	Midday 16th July 2024
Autumn 2	£8.50	Midday 15th October 2024
Spring 1	£7.50	Midday 17th December 2024
Spring 2	£7.50	Midday 7th February 2025
Summer 1	£6.00	Midday 26th March 2025
Summer 2	£8.75	Midday 20th May 2025

Total for year £47.75

## DATES FOR DIARY JANUARY -APRIL 2025

DAY	DATE	EVENT
Monday -Friday	3 <sup>rd</sup> -7 <sup>th</sup> February 2025	Parent Insight Workshops – all year groups (days and times TBC)
Tuesday-Friday	4 <sup>th</sup> – 7 <sup>th</sup> February 2025 11 <sup>th</sup> -14 <sup>th</sup> February 2025	4H Swimming
Thursday	13 <sup>th</sup> February 2025	Y3 Communion 9.30-10.30am @Church
Thursday	13 <sup>th</sup> February 2025	Spring Disco EY's & Y1 - 3.15-4.15pm Y2 & Y3 – 4.30-5.30pm Y4 – Y6 5.45-6.45pm
Friday	14 <sup>th</sup> February 2025	Children's University Passport Bank
Friday	14 <sup>th</sup> February 2025	3D Family Worship 9-9.30am
Friday	14 <sup>th</sup> February 2025	Super Leaders Church Service 2.15-3.00pm
<b>Friday</b>	<b>14<sup>th</sup> February 2025</b>	<b>School Closes</b>
<b>Monday</b>	<b>24<sup>th</sup> February 2025</b>	<b>School Opens</b>
Friday	28 <sup>th</sup> February 2025	Friends of St Ann's Meeting 2.00-3.00pm
Wednesday	5 <sup>th</sup> March 2025	Ash Wednesday Service 2.15-3.00pm @ Church led by Rev Alan. Everyone welcome!
Friday	7 <sup>th</sup> March 2025	2O Family Worship 9.00-9.30am
Monday	10 <sup>th</sup> March 2025	Assessment Week
Tuesday-Friday	11 <sup>th</sup> -14 <sup>th</sup> March 2025 18 <sup>th</sup> -21 March 2025	4S Swimming
Friday	14 <sup>th</sup> March 2025	2M Family Worship 9.00-9.30am
Thursday	20 <sup>th</sup> March 2025	Open House Book Look 3.30-4.30pm
Monday-Friday	24-28 March 2025	Mentoring Conversations (days & times TBC)
Monday	31 <sup>st</sup> March 2025	St Ann's Has Got Talent
Thursday	3 <sup>rd</sup> April 2025	Easter Bingo (session times tbc)
Thursday	3 <sup>rd</sup> April 2025	Y4 Communion 9.30-10.30am @Church
Friday	4 <sup>th</sup> April 2025	Children's University Passport Bank
Friday	4 <sup>th</sup> April 2025	Y5 Easter Service 2.15-3.00pm @ Church
<b>Friday</b>	<b>4<sup>th</sup> April 2025</b>	<b>School Closes</b>